

IFP A10VSO PISTON PUMPS PRESSURE CONTROLS

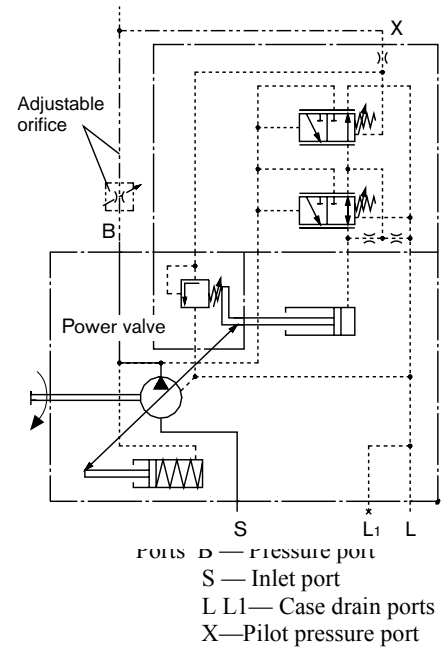


DFR / DFR1 —PRESSURE FLOW CONTROL

DFR pressure provides a pressure control function along with the means to control pump flow by varying a Differential pressure across an orifice (fixed orifice, adjustable flow control, directional control). The pump supplies only the amount of system flow as controlled by the adjustable orifice.

In the DFR1 control the orifice between the X port and tank is plugged

Setting range: 290 PSI (20 bar) ~ 4000 PSI (280 bar)



DFLR—PRESSURE / FLOW / POWER CONTROL

** CONTACT FACTORY FOR DFLR CONTROL **

Available sizes:

18 — 1.10 in³/rev [18 cm³/rev]

28 — 1.71 in³/rev [28 cm³/rev]

45 — 2.75 in³/rev [45 cm³/rev]

71 — 4.33 in³/rev [71 cm³/rev]

100—6.10 in³/rev [100 cm³/rev]

140—8.45 in³/rev [140 cm³/rev]