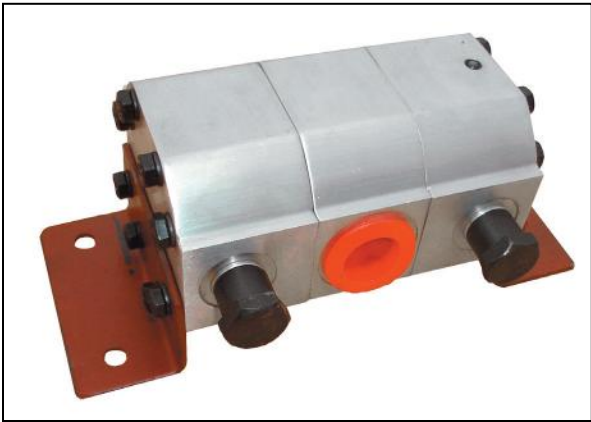
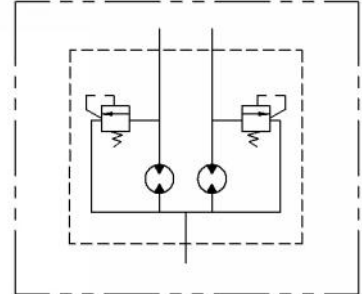


International fpa introduces A. F. D. Flow divider

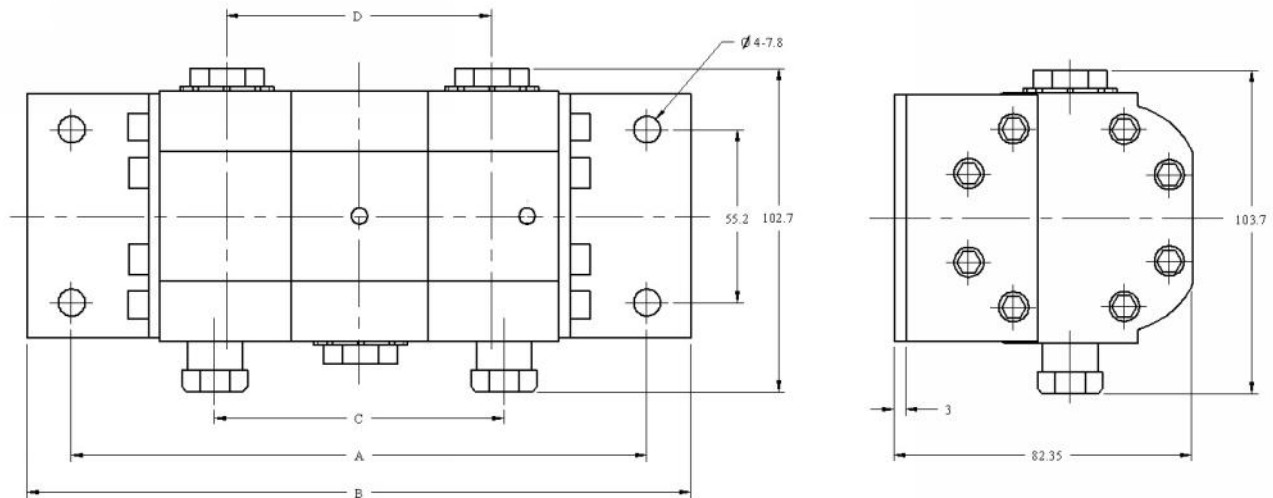


Rotary flow dividers
fixed displacement
Two Sections
Adjustable port reliefs
each section



Order Code AFD-	Displacement Each / Section		SAE Ports		Minimum Flow/ Section		Maximum Flow/ Section		Cont. Diff. Pressure Between Inlet/Outlet		Maximum Outlet Pressure Any Section		Dimensions inches (millimeters)			
	In. ³	Cm. ³	Inlet	Outlet	GPM	L/M	GPM	L/M	PSI	BAR	PSI	BAR	A	B	C	D
06	.97	1.60	9/16-18	9/16-18	0.8	3.0	1.7	6.4	1800	124	3500	241	5.0(127.7)	6.0(153.5)	2.6(65.5)	2.2(57.7)
08	.129	2.13	3/4-16	3/4-16	1.2	4.5	2.5	9.5					5.2(131.9)	6.2(157.7)	2.7(69.7)	2.4(59.8)
12	.194	3.18	7/8-16	9/16-18	1.7	6.4	4.5	13.2					5.4(138.2)	6.5(164.3)	3.0(76.0)	2.5(63.0)
16	.258	4.24	7/8-14	7/8-14	2.5	9.5	5.0	18.9					6.6(166.7)	7.6(192.0)	3.3(84.1)	3.0(77.8)
20	.323	5.29	7/8-14	7/8-14	3.0	11.4	6.0	22.7					5.9(150.9)	7.0(176.7)	3.5(88.7)	2.7(69.4)
24	.388	6.36	7/8-14	7/8-14	3.5	13.2	7.0	26.5	1600	110			6.2(157.3)	7.2(183.1)	3.7(95.1)	2.9(72.6)
28	.453	7.42	7/8-14	7/8-14	4.0	15.1	8.0	30.3	1300	90			6.4(163.6)	7.4(189.4)	4.0(101.4)	3.0(75.72)
32	.517	8.42	7/8-14	7/8-14	4.5	17.0	9.0	34.1	1200	83			6.5(166.0)	7.6(191.8)	4.0(103.8)	3.0(76.9)

NOW IN STOCK



MODEL CODE

IFP AFD - 16 / 16

IFP ALUMINUM DISPLACEMENT
PRODUCTION FLOW DIVIDER PER / SECTION