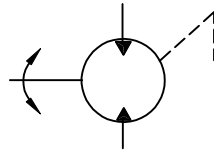


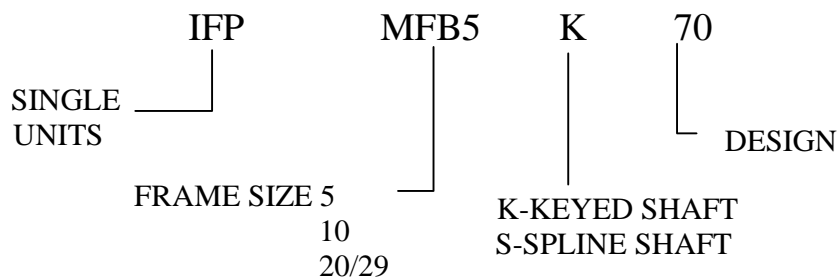
IFP FIXED DISPLACEMENT PISTON MOTORS MFB5/10/20/29



- High Efficiency
- Wide Speed Range
- Extended Life
- Reversible
- Compact
- Quiet Operation
- High Operating Pressure



◆ Piston Motor Ordering Specification



TECHNICAL DATA

Values based on using anti-wear type petroleum oil 150 SUS at 100°F and 0 PSI inlet pressure

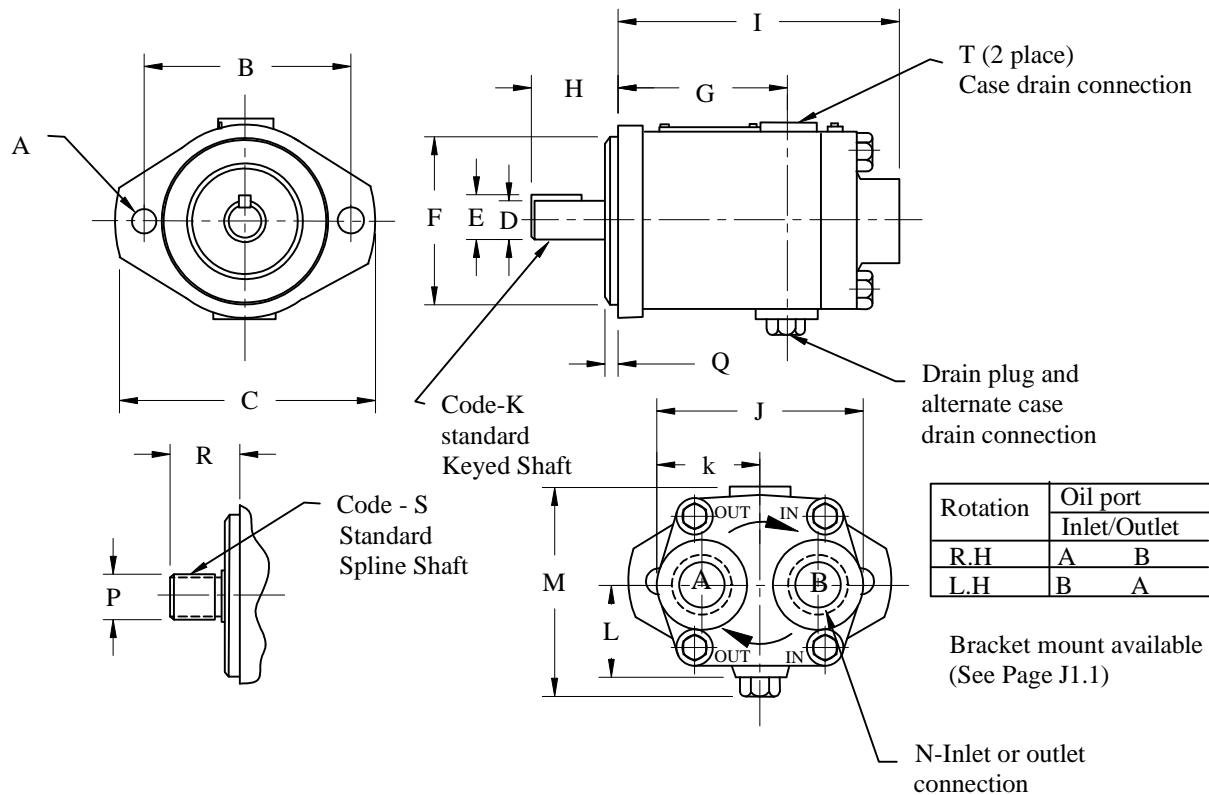
Model series	Theoretical Displ. cu. in/rev. (cu. cc/rev.)	Flow USGPM (LPM) @Rate RPM	Rated Operating Speed (RPM)		Pressure PSI (Bar)		Max Output Torque lb.in (NM)	Weight lb. (kg)
			Rated	Max	Rated	Max		
MFB5	0.643 (10.5)	5.0 (19.0)	1800	3600	1500 (103)	3000 (207)	270 (30.5)	11 (5.0)
MFB10	1.29 (21.12)	10.0 (37.9)	1800	3200	1500 (103)	3000 (207)	568 (64.1)	21 (9.5)
MFB20	2.61 (42.8)	20 (75.7)	1800	2400	1500 (103)	2500 (172.4)	910 (102.8)	49 (18.5)
MFB29	3.76 (61.6)	29 (109.8)	1800	2400	1000 (69)	2000 (138.0)	1090 (123.7)	49 (18.5)

IFP offers a complete line of economical high performance fixed displacement piston motors providing speeds up to 3600 RPM and output torques to 1190 lb. in. in a compact light weight package. Application for MFB motors can be continuous or intermittent duty with MFB motors offer high efficiency inherent to piston units with a wide speed range from 300 to 3600 RPM at the maximum torque rating. Housing must be kept full of fluid at all times to provide internal lubrication.

WARNING

Before starting fill motor case with system fluid through uppermost drain port. Housing must be kept full at all times to provide internal lubrication.

IFP MFB PISTON MOTORS INSTALLATION DIMENSIONS



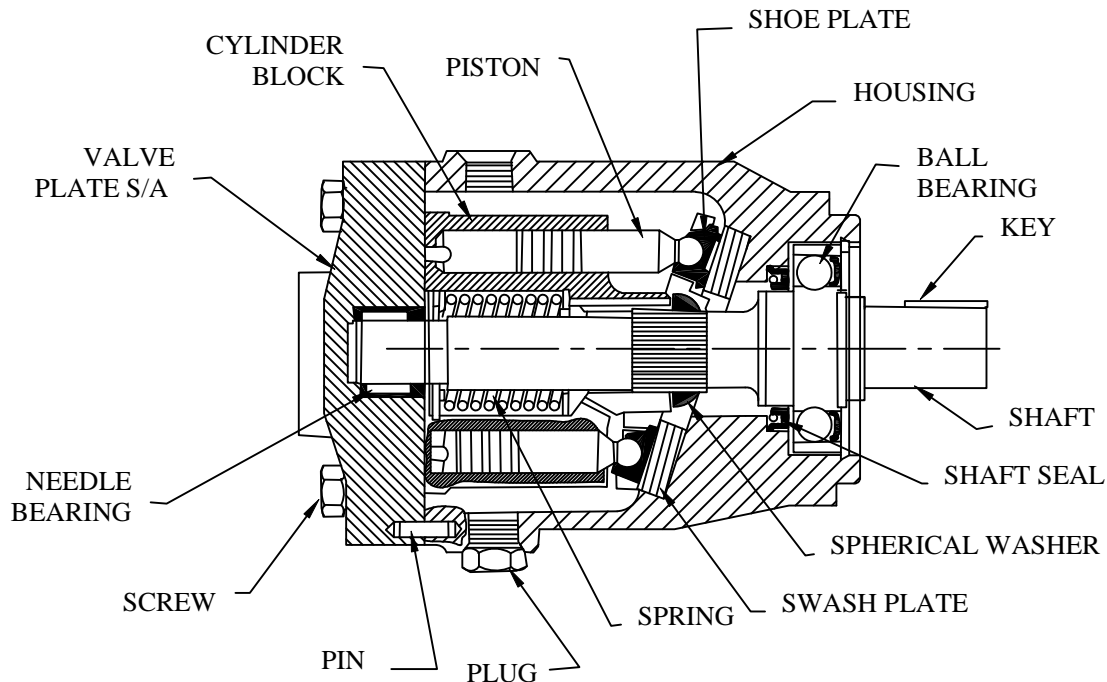
DIMENSION CHART

NO	MFB5 MODEL	MFB10 MODEL	MFB20/29 MODEL
A	□.44 (11.2)	□.56 (14.22)	□.56 (14.22)
B	4.18(106.4)	5.75(146)	5.75(146)
C	□5.12(130)	□6.88(174.6)	□6.88(174.6)
D	□.75(19.05)	□.875(22.22)	□1.25(31.8)
E	.83(21.08)	.989(25.12)	1.391(35.3)
F	□3.25(82.55)	□4.00(101.60)	□4.00(101.60)
G	3.88(85.9)	3.46(87.9)	5.12(130.2)
H	1.75(44.4)	2.31(58.7)	2.31(58.7)
I	5.60(142.2)	6.67(169.4)	8.00(203.2)
J	3.88(98.6)	4.50(114.3)	5.68(144.2)
K	1.94(49.3)	2.25(57.2)	2.84(72.1)
L	1.88(47.8)	2.47(62.7)	3.00(76.2)
M	4.06(103.1)	5.25(133.3)	6.31(159.9)
N	1.062-12 UN-2B	1.625-12 UN-2B	1.625-12 UN-2B
O	.938(23.8)	1.312(33.3)	1.88(47.6)
P	9 Teeth 16/32 pitch	13 Teeth 16/32 pitch	14 Teeth 12/24 pitch
Q	.25(31.8)	.375(9.5)	.385(9.8)
R	1.25(31.8)	1.75(44.4)	2.31(58.7)
T	.563-18 UNF-2B STR THD.	.750-16 UNF-2B THD.	.750-16 UNF-2B STR THD.

IFP MFB5 PISTON MOTOR



Service Parts Information



PART#	DESCRIPTION
875772	ROT GROUP MFB5
165385	△ RETAINING RING
273409	△ LIFT LIM. WASHER
274787	△ SPRING
275474	△ THRUST WASHER
326181	△ CYLINDER BLOCK
248203	△ PIN
275485	△ SPHERICAL WASHER
274249	△ SHOE PLATE

PART#	DESCRIPTION
1253	SCREW(4 REQ'D)
938551	VALVE PLATE
167237	PIN(2 REQ'D)
39465	NEEDLE BEARING
279614*	GASKET
942229	△ PISTON S/A KIT(9)
319245	△ SWASH PLATE
323951	HOUSING
181728	PLUG

PART#	DESCRIPTION
154128*	"O" RING
237014*	SHAFT SEAL
283687	VITON SHAFT SEAL
266160	KEYED SHAFT
295237	SPLINE SHAFT
283233	BEARING
98653	RETAINING RING
140356	RETAINING RING

△ INCLUDE - ROTATION GROUP * INCLUDE - SEAL KIT (919239)
 SCREW (4 REQ.) 25-35 lb.ft.

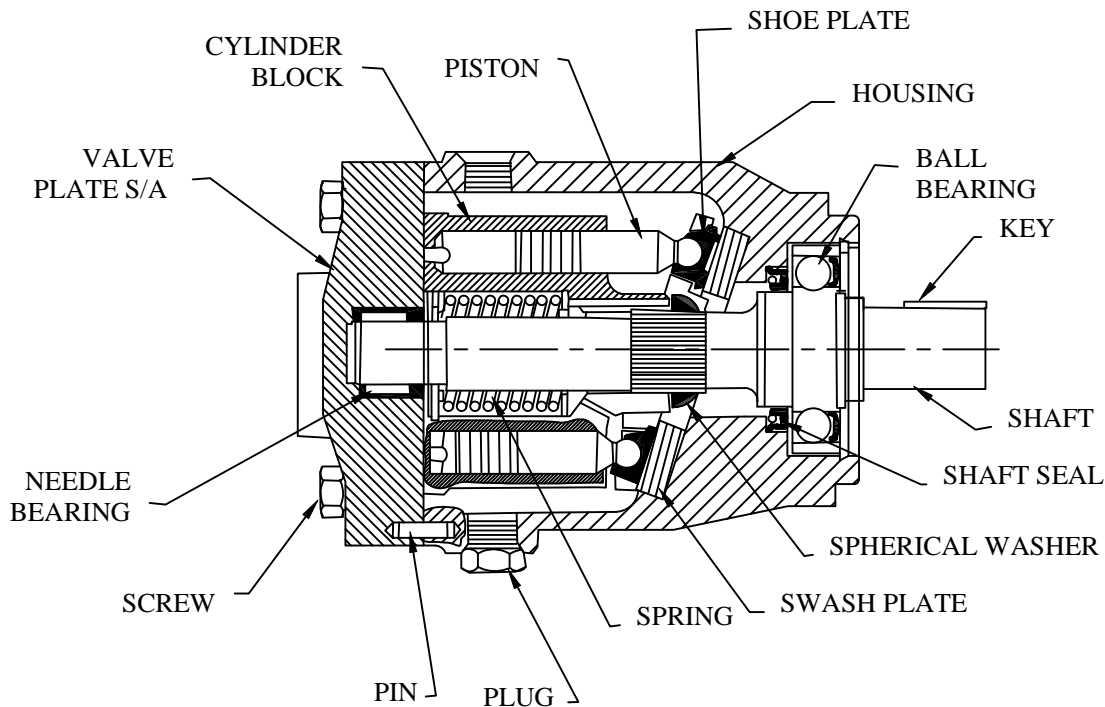
WARNING:

Before starting fill motor case with system fluid through uppermost drain port. Housing must be kept full at all times to provide internal lubrication.

IFP MFB10 PISTON MOTOR



Service Parts Information



PART#	DESCRIPTION	PART#	DESCRIPTION	PART#	DESCRIPTION
938272	ROT GROUP MFB10	1276	SCREW(4 REQ'D)	154128	* "O" RING
93509	△ RETAINING RING	938391	VALVE PLATE	343573	* SHAFT SEAL
245223	△ LIFT LIM. WASHER	167237	PIN(2 REQ'D)	352432	VITON SHAFT SEAL
247294	△ SPRING	12016	NEEDLE BEARING	274382	SEAL RETAINER
241954	△ THRUST WASHER	425439	* GASKET	261552	KEYED SHAFT
321703	△ CYLINDER BLOCK	942047	△ PISTON S/A KIT(9)	295729	SPLINE SHAFT
248811	△ PIN	239077	△ SWASH PLATE	284397	BEARING
423324	△ SPHERICAL WASHER	274831	HOUSING	119982	RETAINING RING
275961	△ SHOE PLATE	181728	PLUG	120428	RETAINING RING

△ INCLUDE - ROTATION GROUP * INCLUDE - SEAL KIT (919240)
 SCREW (4 REQ.) 25-35 lb.ft.

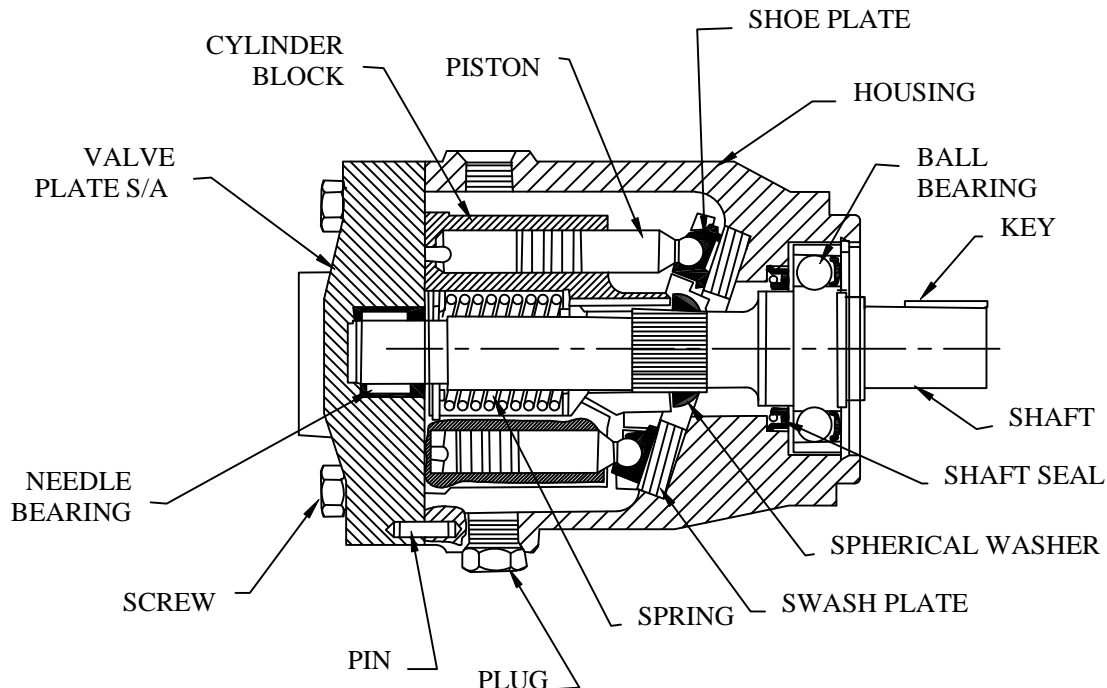
WARNING:

Before starting fill motor case with system fluid through uppermost drain port. Housing must be kept full at all times to provide internal lubrication.

IFP MFB20 PISTON MOTOR



Service Parts Information



PART#	DESCRIPTION	PART#	DESCRIPTION	PART#	DESCRIPTION
938281	ROT GROUP MFB20	1316	SCREW(4 REQ'D)	154129	* "O" RING
194025	△ RETAINING RING	938383	VALVE PLATE	295262	* SHAFT SEAL
244931	△ LIFT LIM. WASHER	3913	PIN(2 REQ'D)	427139	VITON SHAFT SEAL
246387	△ SPRING	251108	NEEDLE BEARING	194878	SEAL RETAINER
238780	△ THRUST WASHER	238487	* GASKET	266189	KEYED SHAFT
284197	△ CYL. BLK. (MFB20)	186580	PLUG	285408	SPLINE SHAFT
248835	△ PIN	941884	△ PISTON S/A KIT(9)	283090	BEARING
938392	△ SPHERICAL WASHER	239335	△ SWASH PLATE	117507	RETAINING RING
248609	△ SHOE PLATE	252114	HOUSING	117506	RETAINING RING

△ INCLUDE - ROTATION GROUP * INCLUDE - SEAL KIT (919242)
 SCREW (4 REQ.) 25-35 lb.ft.

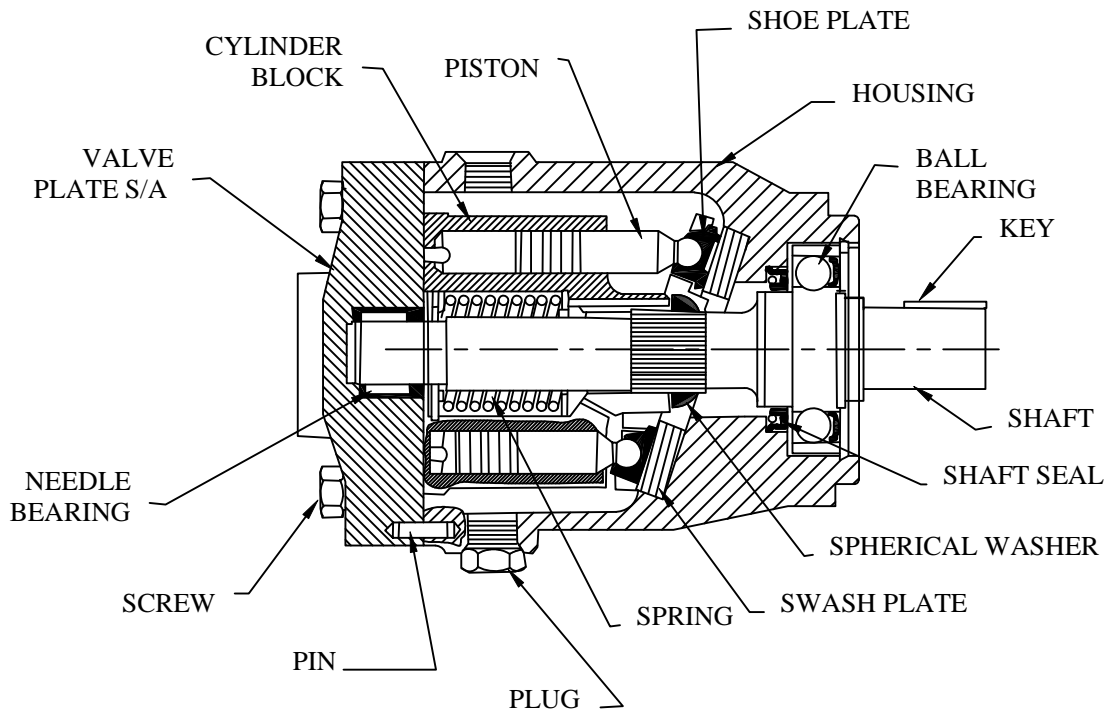
WARNING:

Before starting fill motor case with system fluid through uppermost drain port. Housing must be kept full at all times to provide internal lubrication.

IFP MFB29 PISTON MOTOR



Service Parts Information



PART#	DESCRIPTION	PART#	DESCRIPTION	PART#	DESCRIPTION
938295	ROT GROUP MFB29	1316	SCREW(4 REQ'D)	154129 *	"O" RING
194025 Δ	RETAINING RING	941952	VAL. PLT. MFB29	295262 *	SHAFT SEAL
244931 Δ	LIFT LIM. WASHER	3913	PIN(2 REQ'D)	427139	VITON SHAFT SEAL
246387 Δ	SPRING	251108	NEEDLE BEARING	194878	SEAL RETAINER
238780 Δ	THRUST WASHER	238487 *	GASKET	266189	KEYED SHAFT
287454 Δ	CYLINDER BLOCK	186580	PLUG	285408	SPLINE SHAFT
248835 Δ	PIN	941885 Δ	PISTON S/A MFB29	283090	BEARING
938392 Δ	WASHER S/A	239335 Δ	SWASH PLATE	117507	RETAINING RING
248609 Δ	SHOE PLATE	252114	HOUSING	117506	RETAINING RING

Δ INCLUDE - ROTATION GROUP * INCLUDE - SEAL KIT (919242)
 SCREW (4 REQ.) 25-35 lb.ft.

WARNING:

Before starting fill motor case with system fluid through uppermost drain port. Housing must be kept full at all times to provide internal lubrication.