

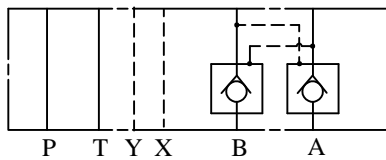
# IFP MPD07 PILOT CHECK MODULE



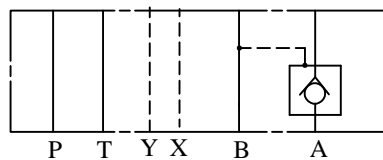
- ISO4401-07 SIZE/NFPA D07
- STEEL SEAT FOR LONG WEAR
- ZERO LEAKAGE
- DECOMPRESSION FEATURE



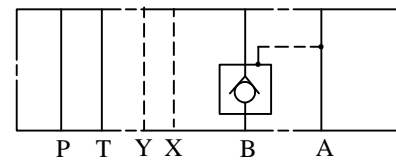
MPD-07-W



MPD-07-A



MPD-07-B



## ORDERING CODE

**MPD - 07 - W - 1**

MODULAR CHECK VALVE

SIZE D07

CONTROL PORT  
W ~ A, B PORT  
A ~ A PORT  
B ~ B PORT

CRACKING PRESSURE 1:2

## SPECIFICATIONS

TYPES	SIZE	MAX. PRESSURE (PSI)	RATED FLOW (GPM)	CRACKING PRESSURE (PSI)	AREA RATIO			WEIGHT lbs
					PILOT PISTON	VALVE	NEEDLE VALVE	
MPD-07-W -1-*	D07	4570 PSI	79.3	29	1	0.5	0.07	14.96
A								
B								
MPD-07-W -2-*								
A	71							
B								

IFP offers a pilot operated Check Valve module designed for use in applications requiring positive lock on a pressurized load, but will release the load upon application of pressure to the opposite port. Modules are available with dual or single service line versions. The use of modular design makes compact hydraulic systems in which the modules are "sandwiched" between a directional valve and standard mounting surface.

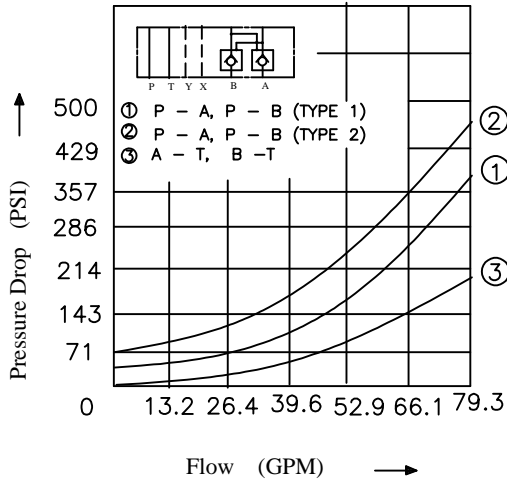
# IFP MPD07 PILOT CHECK MODULE



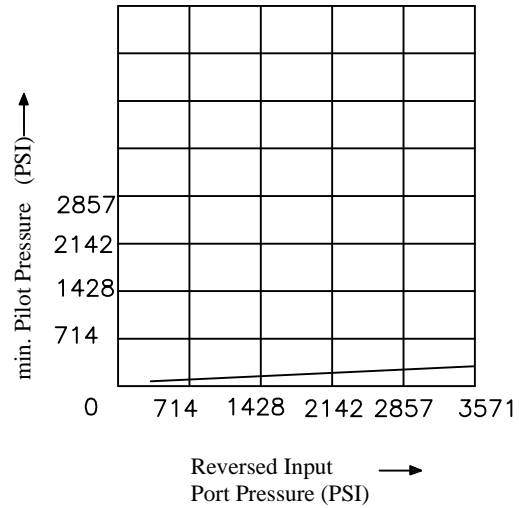
## PERFORMANCE CURVES Viscosity (100-150 SUS)

MPD-07-W-\*

Pressure Drop characteristic

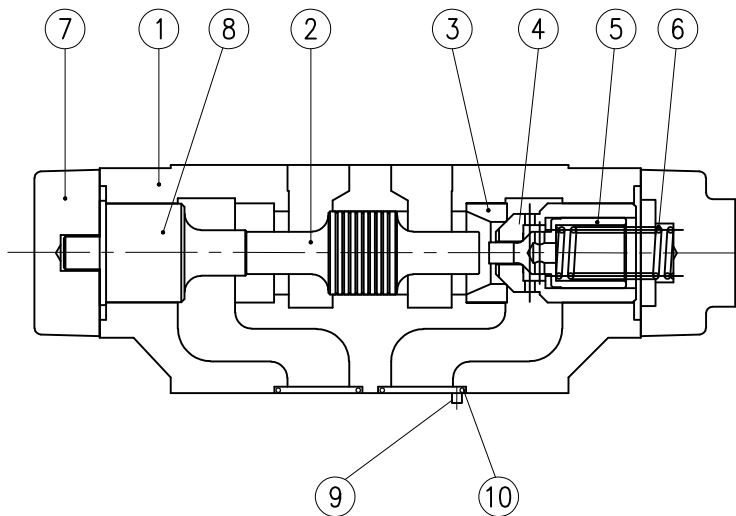


min. Pilot Pressure characteristic



## CROSS SECTION DIAGRAM

MPD-07-A-1



NO.	DESCRIPTION
1	Body
2	spool
3	Seat
4	Poppet
5	Poppet
6	Spring
7	Cover
8	Bushing
9	Pin
10	O-Ring : Ports A, B, P, T: AS568-118 Ports X,Y: AS568-012

# IFP MPD07 PILOT CHECK MODULE



## DIMENSIONS

MPD-07-\*-\*

