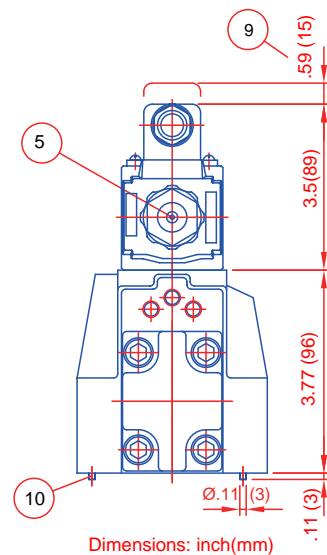
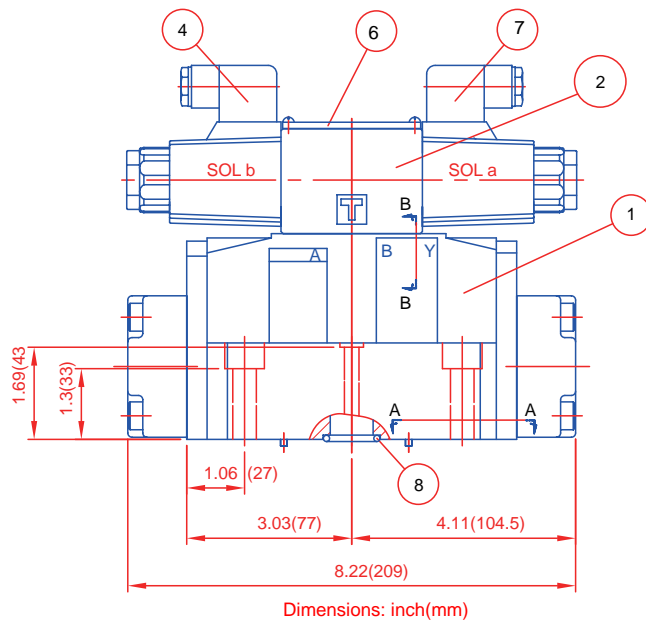
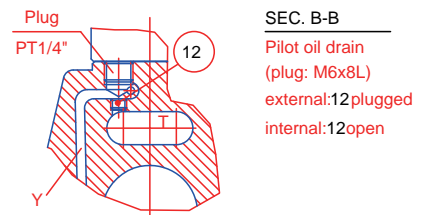
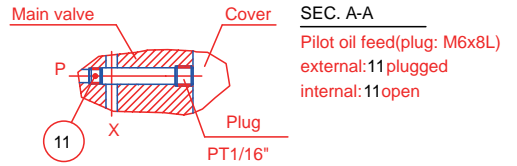
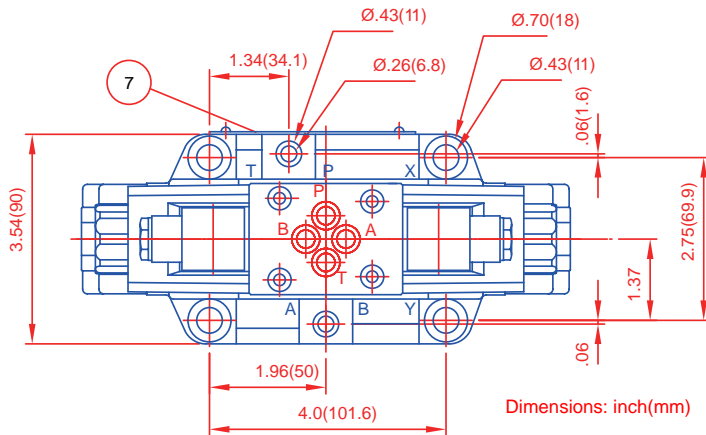


# IFP DG07 SOLENOID CONTROLLED PILOT OPERATED DIRECTIONAL VALVE SIZE NG16/CETOP07

**DIMENSIONS:**

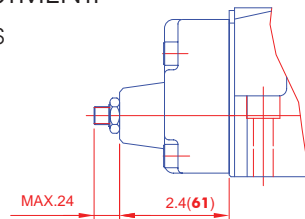
■ DG07-E-\*C AC\* 72DN



- 1: Main valve
- 2: Pilot valve
  - 2-1: Pilot valve DG03-2A-\* (1 solenoid) for main valves with spools \*A, \*B (3 position valve with solenoid on side a)
  - 2-2: Pilot valve DG03-2AL-\* (1 solenoid) for main valves with spools \*AL, \*BL (3 position valve with solenoid on side b)
  - 2-3: Pilot valve DG03-6C-\* (2 solenoid) for main valves with 3 positions
- 3: Solenoid a, color of plug: grey
- 4: Solenoid b, color of plug: black
- 5: Push pin for manual operation
- 6: Nameplate for pilot valve
- 7: Nameplate for whole valve
- 8: O-ring:
  - Ports A,B,P,T: AS568-118 (NBR,Hs90);
  - Ports X,Y: AS568-013 (NBR,Hs90)
- 9: Space required to remove plug
- 10: Locating pin

**STROKE ADJUSTMENT:**

■ DG07-E-\*-\*-70-S



**P CHECK**

■ DG07-E-\*-\*-70-P

- 1.Seat
- 2.Poppet
- 3.Spring Retainer
- 4.Spring
- 5.C-retaining ring

