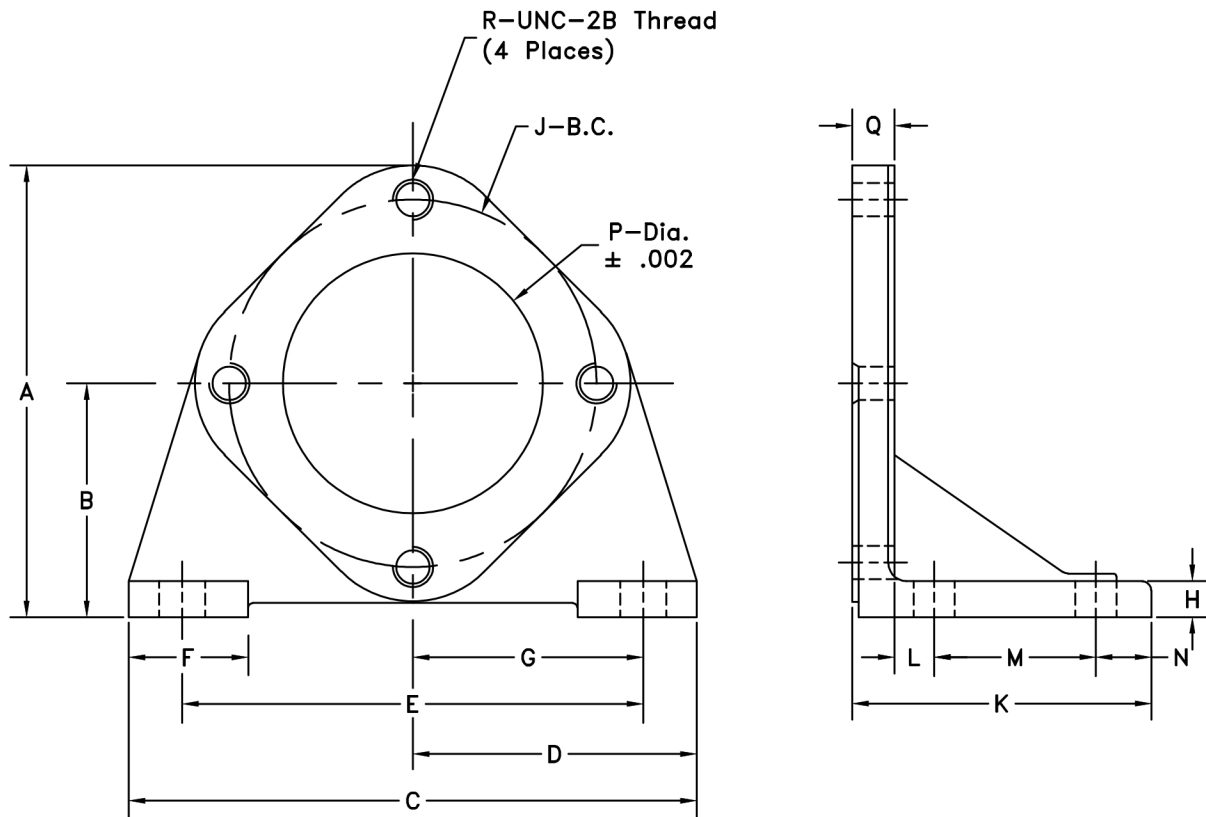


IFP FOOT BRACKET KIT



MODEL CODE

IFB-A

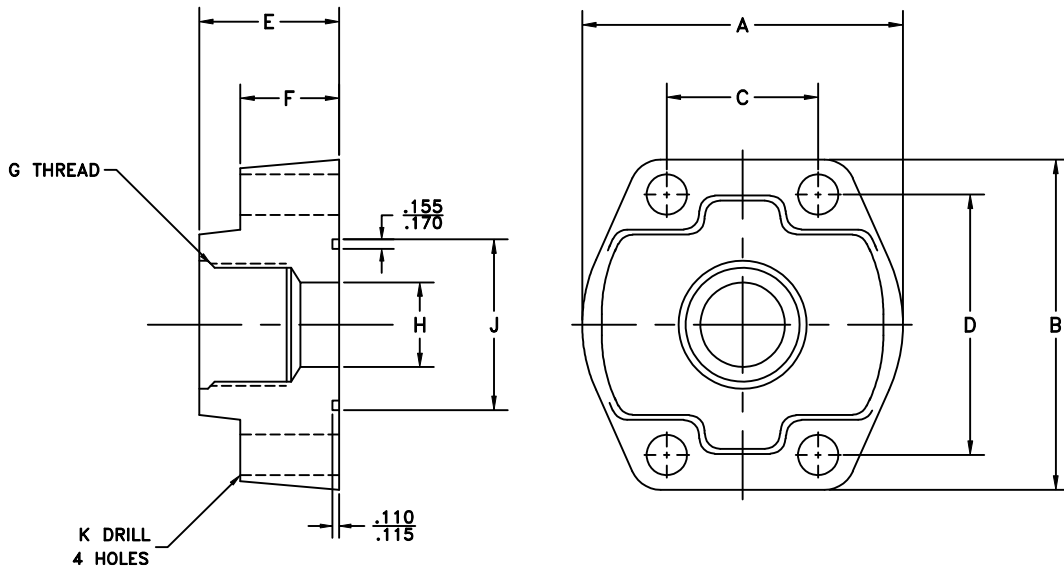
IFP Foot Bracket

A- SAE 'A' 2-bolt 3 1/4"
 B- SAE 'B' 2-bolt 4"
 C- SAE 'C' 2-bolt 5"

Model Number	Dimension mm (Inch)							
	A	B	C	D	E	F	G	H
IFB-A	134.87 (5.31)	69.85 (2.75)	152.40 (6.00)	76.20 (5.00)	127.00 (5.31)	36.58 (1.44)	63.50 (2.50)	12.70 (.50)
IFB-B	180.85 (7.12)	92.20 (3.63)	171.45 (6.75)	85.76 (3.38)	146.05 (5.75)	36.58 (1.44)	73.15 (2.88)	12.70 (.50)
IFB-C	215.90 (8.50)	109.47 (4.31)	265.18 (10.44)	132.59 (5.22)	234.95 (9.25)	50.80 (2.00)	117.60 (4.63)	15.75 (.62)

Model Number	Dimension							
	J	K	L	M	N	P	Q	R
IFB-A	106.38 (4.188)	96.01 (3.78)	14.99 (.59)	50.80 (2.00)	12.70 (.50)	82.63 (3.253)	17.53 (.69)	(.38-16)
IFB-B	146.05 (5.75)	95.76 (3.77)	14.99 (.59)	50.80 (2.00)	12.70 (.50)	101.68 (4.003)	17.29 (.68)	(.50-13)
IFB-C	181.10 (7.13)	131.57 (5.18)	19.05 (.75)	76.20 (3.00)	17.27 (.68)	127.08 (5.003)	19.05 (.75)	(.62-11)

IFP S.A.E. 4 BOLT FLANGE FITTINGS



3000 PSI NPTF THREAD															
PART NO.	PIPE SIZE	A	B	C	D	E	F	G THR. NPTF	H	J MIN.	J MAX.	K DRILL DIA.	BOLTS(ALLEN) 4 REQ.	WASHERS 4 REQ.	O RING
FLI-06PE	.75	2.06	2.56	.875	1.875	1.25	.84	.75	.75	1.250	1.255	.406	3/8-1 1/2"	3/8"	2-214
FLI-08PE	1.00	2.31	2.75	1.031	2.062	1.38	.97	1.00	1.00	1.560	1.565	.406	3/8-1 1/2"	3/8"	2-218
FLI-10PE	1.25	2.88	3.12	1.188	2.312	1.50	1.03	1.25	1.25	1.750	1.755	.469	7/16-1 3/4"	7/16"	2-222
FLI-12PE	1.50	3.25	3.69	1.406	2.750	1.62	1.09	1.50	1.50	2.115	2.125	.531	1/2-2"	1/2"	2-225
FLI-16PE	2.00	3.81	4.00	1.688	3.062	1.62	1.09	2.00	2.00	2.490	2.500	.531	1/2-2"	1/2"	2-228
FLI-20PE	2.50	4.28	4.50	2.000	3.500	2.00	1.47	2.50	2.50	2.995	3.005	.531	1/2-2 1/2"	1/2"	2-232
FLI-24PE	3.00	5.16	5.31	2.438	4.188	2.25	1.59	3.00	3.00	3.615	3.625	.656	5/8 - 2 3/4"	5/8"	2-237

Code 61 design

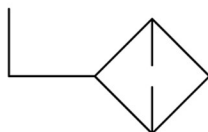
Supplied complete with mounting hardware
(O-ring, Socket Head Cap Screw & Hi- Collar Lock Washer)

IFP SUCTION STRAINERS



Technical Details

- Reusable Type
- Material - SS304
- 149 micron filtration
- Crimped all steel construction
- Max. Temp. - 240 F
- Firm Construction
- Sizes available from 1/2"-3"

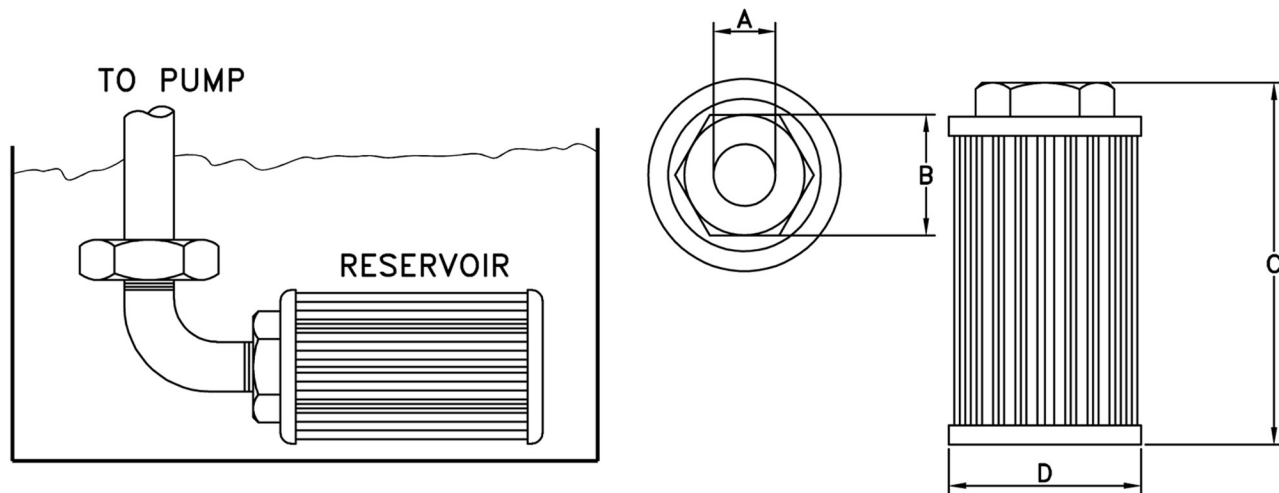


Installation

Install the strainer in a horizontal position.
Tighten only with the hexagonal nut and not by any other means.

DIMENSIONS: inch (mm) FILTRATION: 100 mesh

MODEL NBR.	FLOW GPM (LPM)	THREAD NPT A	NUT SIZE B	OVERALL LENGTH C	DIA. D	WEIGHT lbs (kg)
IFP-005	5 (19)	1/2	1.1 (29)	3.9 (99)	2.5 (64)	.26 (.12)
IFP-007	8 (30)	3/4	1.3 (34)	5.2 (133)	2.5 (64)	.31 (.14)
IFP-013	10 (38)	1	1.7 (42)	6.2 (158)	2.5 (64)	.39 (.18)
IFP-016	20 (75)	1 1/4	1.9 (50)	7.0 (178)	2.5 (64)	.42 (.19)
IFP-053	30 (114)	1 1/2	2.6 (65)	7.6 (194)	3.3 (83)	.70 (.32)
IFP-055	50 (189)	2	3.0 (75)	8.3 (210)	4.0 (102)	.93 (.42)
IFP-092	75(284)	2 1/2	3.8 (97)	10.8 (274)	6.2 (158)	2.6 (1.2)
IFP-105	100(379)	3	4.3 (110)	10.8 (274)	6.2 (158)	2.6 (1.2)



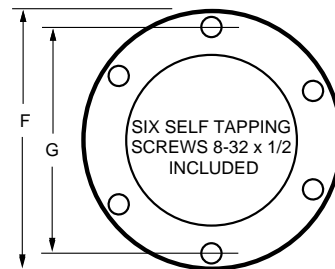
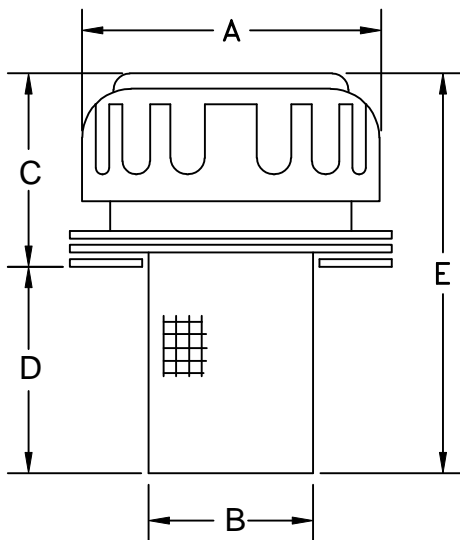
IFP FILLER / BREATHER CAPS



- Chrome plated steel cap
- air flow to 25 CFM
- Ready to install hardware kit
- Filtration : 40 micron foam element
- 40 mesh Metal basket



IFP 1041



MODEL	FILTRATION	A	B	C	D	E	F	G	HOLE
IFP1041	40 MESH	3.1 (80)	1.9 (48)	1.9 (48)	3.5 (90)	5.4 (137)	3.25(85)	2.88(71)	3.4(87)

INCHES (MILLIMETERS)

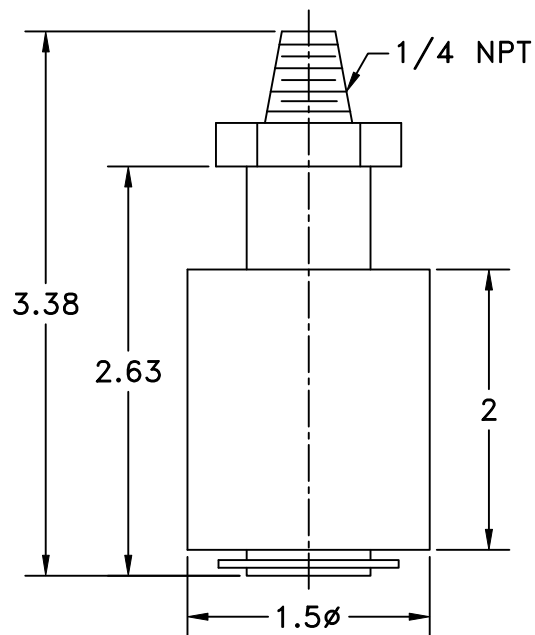
IFP LEVEL SWITCH



IFP 7800

Buna-N float
PBT stem

Economical switch construction from Buna-N and Polybutylene Terephthalate, for use with lubricating oil, hydraulic oil, gasoline and diesel oil.

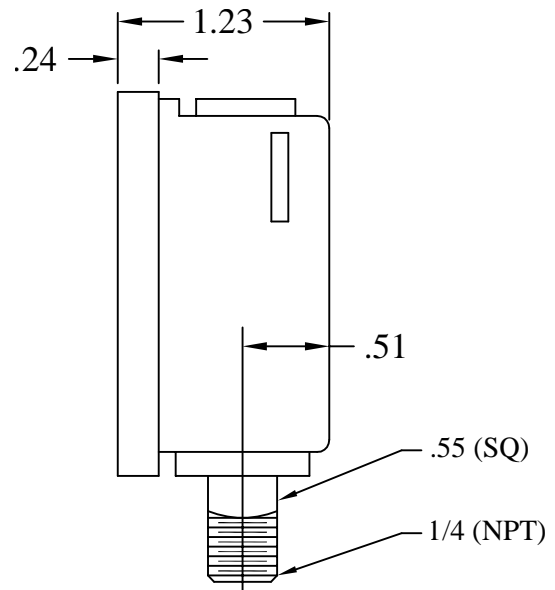
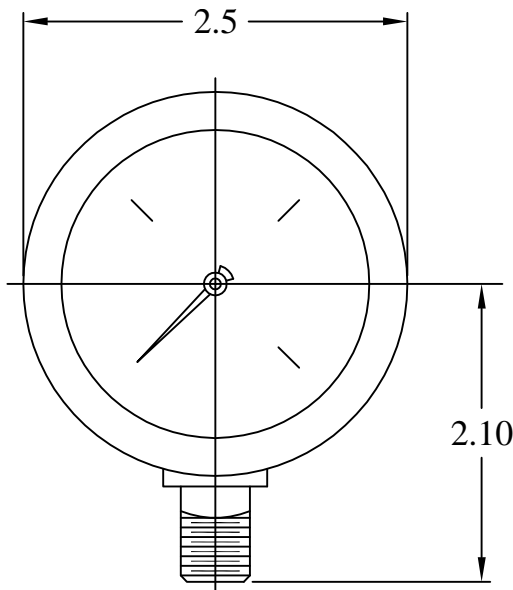


Model No.	Max. Temp.	Max. PSIG	Float SG	Watt Rating
IFP 7800	105 C	105	0.45	60

IFP PRESSURE GAUGES



- Glycerin filled
- Stainless Steel Body
- Aluminum Dial
- Dual Scale PSI/Bar
- Bronze bourdon tube
- 1/4 NPT Bottom Connection
- c/w .5mm internal gauge snubber
- Precision $\pm 2\%$ @ 23° F
- 2 1/2" Diameter dial



Available on Request

Model Code	Range
IPG 1	0-30 in hg
IPG 4	0-60 PSI
IPG 5	0-100 PSI
IPG 6	0-160 PSI
IPG 7	0-200 PSI
IPG 10	0-600 PSI
IPG 12	0-1,500 PSI

Standard Stock

Model Code	Range
IPG 8	0-300 PSI
IPG 11	0-1,000 PSI
IPG 13	0-2,000 PSI
IPG 14	0-3,000 PSI
IPG 15	0-5,000 PSI
IPG 17	0-10,000 PSI

IFP LGI5T-22 LEVEL/ TEMPERATURE GAUGES



Application

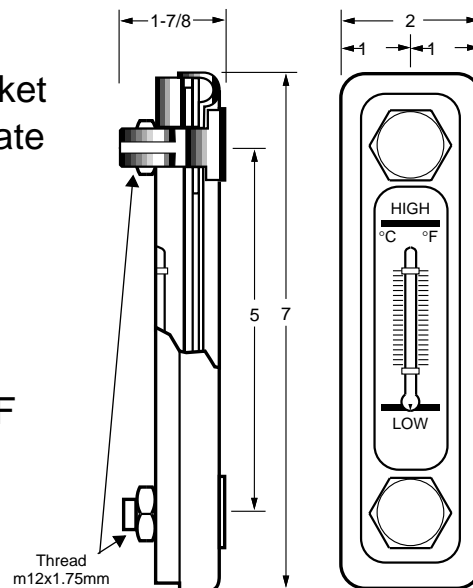
LGI-5T-22 Level/Temperature gauges are used on reservoirs & tanks for visual indication of oil level and temperature. LGI-5T-22 can be installed from either outside or inside the reservoir. Installation requires only two mounting holes.



TECHNICAL DATA FOR SIGHT LEVEL GAUGES

Features

- Comes complete with neoprene gasket & mounting bolts. Ready for immediate installation
- Extra large sight glass.
- Thermometer has readings in Centigrade and Fahrenheit
- Can withstand temperatures to 225° F



Drill 1/2" Holes 2
Places on 5" Center

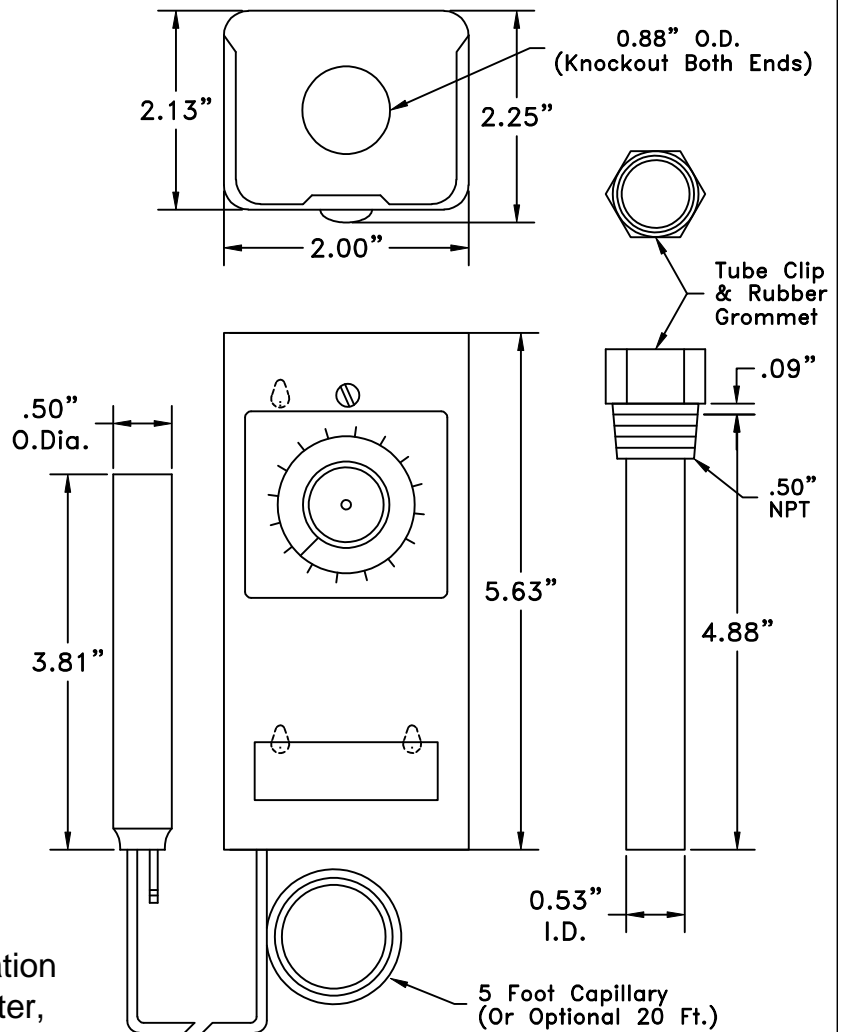
IFP ELECTRICAL / TEMPERATURE CONTROLLER



- 1 single-pole, double-throw (spdt) switch that breaks R-B and makes R-W at the set point on a temperature rise.
- Available with an adjustable differential.
- Easily adjustable set point adjustment knob on front of case.
- Capillary tubing allows remote mounting of sensing element; models available with various lengths.
- Available with a fast-response sensing element.
- Controller can be mounted in any position.

SPECIFICATIONS :

- A) Material: Copper
 B) Power Limits:
- 1) For three phase, motor operation use only with a magnetic starter, 125 VA max.
(VA = volts x amps)
 - 2) For pilot duty, 125 VA max.
 - 3) For direct connection to motor:
 120v AC/8.0 amps max
 230v AC/5.1 amps max
 277v AC/4.2 amps max
 460v AC/2.0 amps max
 - 4) Temperature operating range:
 15°C to 75°C.



APPLICATIONS (Temperature Controller)

The unit acts as an automatic electric power switch temperature control with on-off adjustable differential of 6°C, for use with electric motor, fan type air/oil coolers, or oil temperature signal.

PART #	DESCRIPTION
T675A	Insertion thermostat SPDT switch adj. differential 5 Ft copper element +15°C to +75°C
310-2005	Bulbwell

IFP DRIVE COUPLINGS



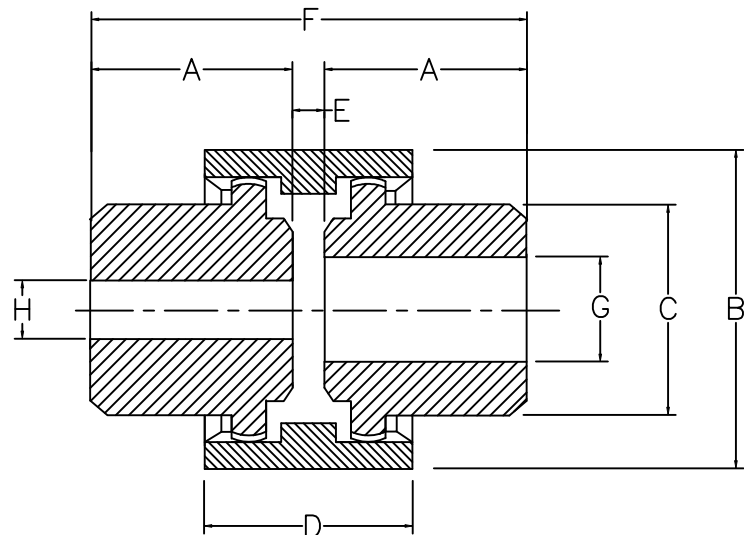
- Low cost
- Long trouble free life
- Easy installation
- High Horsepower to weight ratio
- Requires no maintenance or lubrication



IFP FLEXIBLE DRIVE COUPLINGS have two steel gear hubs engaged in a nylon sleeve. The gears have a crowned tooth form which permits axial and angular misalignment. They are low cost, easy to assemble, and require no maintenance or lubrication. IFP has standardized on three models to cover a comprehensive range of bore sizes and power ratings.

Assembly Procedure:

1. Maximum angular misalignment is $\pm 2^\circ$.
Maximum parallel misalignment is $\pm 0.039"$ (1 mm).
2. Ensure that the IFP Drive Coupling gear Hubs are an easy fit to their respective shafts. Do not use heavy blows to force the hubs on.
3. When in position, the hubs should have a gap of 0.156" (4 mm) as denoted by 'E' dimension. Maximum gap is not critical, so long as teeth on both hubs are completely within sleeve at all times when installed.
4. Tighten grub screws to locate both gear hubs on to their respective shafts.



MODEL	Max. Speed R.P.M	HP Per 100 RPM	Weight Lb. (kg.)	A in(mm)	B in(mm)	C in(mm)	D in(mm)	E in(mm)	F in(mm)	G		H Pilot Bore
										Max. Bore	Min. Bore	
IFP-28	5000	1	2.2 (1)	1.6(40)	2.6(67)	1.7(44)	1.5(38)	0.2(4)	3.3(84)	11/8(28)	0.4(10)	0.4(10)
IFP-42	5000	1.75	4.4 (2)	1.7(42)	3.4(87)	2.4(60)	2.0(52)	0.2(4)	3.5(88)	15/8(42)	0.4(10)	0.4(10)
IFP-55	4000	8	11.0(5)	2.4(60)	4.8(121)	3.1(80)	2.5(64)	0.2(4)	4.9(124)	21/8(55)	0.7(19)	0.7(19)

HYDRAULIC AND LUBRICATION OIL FILTER ELEMENTS



IFP filters utilize state of the art medias and manufacturing techniques to provide premium filtration performance. The metal free pleat pack design has superior resistance to flow fatigue while maximizing dirt holding capacity and removal efficiency. Products are available in 150 or 3000 psid collapse rating with removal capabilities of 3, 6, 12 and 25 micron at beta > 200. We offer element interchange for over 20 different manufacturers



- Vickers
- Moog
- Hycon
- Schroeder
- Pall
- Donaldson
- Stauff
- Fairey
- Textron (PTI)
- Baldwin
- Parker Western

Temperature Range:

Nitrile seals -45°F to +225°F Fluorcarbon seals -20°F to +275°F

Hardware Materials:

Corrosion protected carbon steel end caps and core

Filter Medium:

150 PSID minimum per ISO-2941, high collapse elements 3000 PSID

Flow Direction:

Outside to in

Removal Rating:

BETA 3,6,10,12,25 = 200 per ISO-4572

Fluid Comptability:

Compatible with petroleum oils, waterglycols, water-oil emulsions and high water based fluids. phosphate esters, diesters and specified synthetics. High water based fluids and water glycol tested at 200°F. Other tested at 250°F per ISO-2943

General:

Meet or exceed all performance requirements specified in MIL-F-52723(ME)