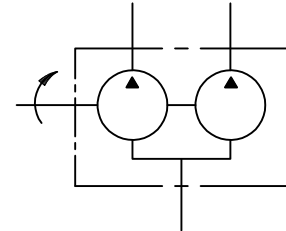


IFP T6CC HIGH PERFORMANCE DOUBLE VANE PUMPS



High Performance in an Economical Package

International T6CC fixed displacement vane pumps are engineered for higher operating pressures (4000 psi) and shaft speeds (2800 rpm) demanded by today's expanding Fluid Power market. The T6CC has an SAE "B" mount with a wide variety of displacements and keyed / splined shafts.



Features:

- * High Volumetric Efficiency
- * Double Lip Vane Design

- * Lower Noise Levels
- * Large Variety Displacements

IFP	-	T6CC	-	010	-	10	-	1	-	R	-	N
		Series										
				Front		Back		Shaft		Rotation		Design
				Ring	Size	Ring	Size	1-7/8 keyed		R - Right		
				03	17	03	17	3-Spline		L - Left		
				05	20	05	20	SAE "BB" 15th				
				06	22	06	22	5-Spline				
				08	25	08	25	SAE "B" 13th				
				10	28	10	28					
				12	31	12	31					
				14		14						

General Characteristics

Series	Max. Pressure PSI (MPa)	Speed r/min		Displ. in ³ /rev (cm ³ /rev)	Mounting Standard	Weight lb(kg)	Fluid Connection (SAE 4-bolt)		
		Max.	Min.				Pressure Ports (Front & Back)	Suction STD.	Inlet Opt.
T6CC	4000(28.0)	2800	600	.66 ~ 5.42 (10.8 ~ 88.7)	SAE - B	57.3 (28)	1" S. FLG.	3" S. FLG.	2 1/2" S. FLG.

Operating Specifications

Fluid Type	T6CC Continuous		T6CC Intermittent	
	Speed r/min	Pressure psi(MPa)	Speed r/min	Pressure psi(MPa)
Antiwear Petroleum Base	2800	3500(24.5)	2800	4000(28.0)
Non Antiwear Petroleum Base	2800	2500(17.5)	2800	3000(21.0)
Water in Oil Emulsions	1800	2000(14.0)	1800	2500(17.5)
Water Glycols	1800	2000(14.0)	1800	2500(17.5)
Synthetic Fluids	1800	2500(17.5)	1800	3000(21.0)