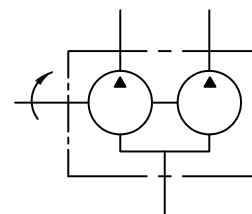


IFP T6DC HIGH PERFORMANCE DOUBLE VANE PUMPS



High Performance in an Economical Package

International T6DC fixed displacement vane pumps are engineered for higher operating pressures (3500 psi) and shaft speeds (2500 rpm) demanded by today's expanding Fluid Power market. The T6DC has an SAE "C" mount with a wide variety of displacements and keyed/splined shafts.



Features:

- * High Volumetric Efficiency
- * Double Lip Vane Design

- * Lower Noise Levels
- * Large Variety Displacements

IFP - T6DC - 050 - 025 - 1 - R - N

Series Front Ring Size Back Ring Size Shaft Rotation Design

Front Ring	Size
14	35
20	38
24	42
28	45
31	50

Back Ring	Size
03	12
05	14
06	17
08	22
10	25
28	31

1 - KEYED SAE C
2 - KEYED NOT SAE
3 - SPLINED SAE C
4 - SPLINED NO SAE

R - Right
L - Left

General Characteristics

Series	Max. Pressure PSI (MPa)	Speed r/min		Displ. in ³ /rev (cm ³ /rev)	Mounting Standard	Weight lb(kg)	Fluid Connection (SAE 4-bolt)	
		Max.	Min.				Pressure Ports (Front & Back)	Suction Inlet
T6DC	3500(24.5)	2500	600	.66 ~ 9.64 (10.8 ~ 157.81)	SAE - C	79.2 (36)	(P1)=1 1/4", P2=1" S. FLG.	3" S. FLG.

Operating Specifications

Fluid Type	T6DC Continuous		T6DC Intermittent	
	Speed r/min	Pressure psi(MPa)	Speed r/min	Pressure psi(MPa)
Antiwear Petroleum Base	2500	3500(24.5)	2500	4000(28.0)
Non Antiwear Petroleum Base	2500	2500(17.5)	2500	3000(21.0)
Water in Oil Emulsions	1800	2000(14.0)	1800	2500(17.5)
Water Glycols	1800	2000(14.0)	1800	2500(17.5)
Synthetic Fluids	1800	2500(17.5)	1800	3000(21.0)