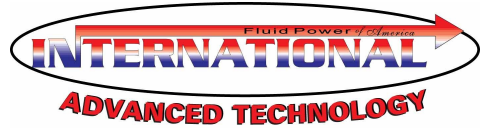
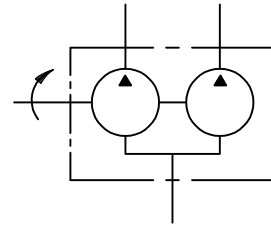


IFP T6EC HIGH PERFORMANCE DOUBLE VANE PUMPS



High Performance in an Economical Package

International T6EC fixed displacement vane pumps are engineered for higher operating pressures (3500 psi) and shaft speeds (2200 rpm) demanded by today's expanding Fluid Power market. The T6EC has an SAE "C" mount with a wide variety of displacements and keyed/splined shafts.



Features:

- * High Volumetric Efficiency
- * Double Lip Vane Design

- * Lower Noise Levels
- * Large Variety Displacements

IFP	-	T6EC	-	066	-	022	-	1	-	R	-	N
		Series		Front Ring Size		Back Ring Size		Shaft		Rotation		Design
				045	050	03	012	1 - KEYED SAE CC		R - Right		
				062	066	05	014	2 - KEYED NO SAE		L - Left		
				072		06	017	3- SPLINED SAE C				
						08	022	4 - SPLINED SAE CC				
						010	025					
						028	031					

General Characteristics

Series	Max. Pressure PSI (MPa)	Speed r/min		Displ. in ³ /rev (cm ³ /rev)	Mounting Standard	Weight lb(kg)	Fluid Connection (SAE 4-bolt)	
		Max.	Min.				Pressure Ports (Front & Back)	Suction Inlet
T6EC	3500(24.5)	2200	600	.66 ~ 13.86 (10.8 ~ 226.80)	SAE - C	121 (55)	(P1)=1 1/2", P2=1" S. FLG.	3 1/2" S. FLG.

Operating Specifications

Fluid Type	T6EC Continuous		T6EC Intermittent	
	Speed r/min	Pressure psi(MPa)	Speed r/min	Pressure psi(MPa)
Antiwear Petroleum Base	2200	3500(24.5)	2200	3500(24.5)
Non Antiwear Petroleum Base	2200	2500(17.5)	2200	3000(21.0)
Water in Oil Emulsions	1800	2000(14.0)	1800	2500(17.5)
Water Glycols	1800	2000(14.0)	1800	2500(17.5)
Synthetic Fluids	1800	2500(17.5)	1800	3000(21.0)