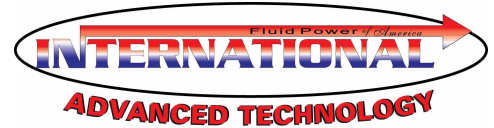
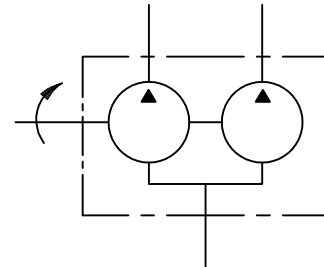


IFP T6ED HIGH PERFORMANCE DOUBLE VANE PUMPS



High Performance in an Economical Package

International T6ED fixed displacement vane pumps are engineered for higher operating pressures (3500 psi) and shaft speeds (2200 rpm) demanded by today's expanding Fluid Power market. The T6ED has an SAE "C" mount with a wide variety of displacements and keyed/splined shafts.



Features:

- * High Volumetric Efficiency
- * Double Lip Vane Design

- * Lower Noise Levels
- * Large Variety Displacements

IFP	-	T6ED	-	066	-	035	-	1	-	R	-	N	
		Series				Front Ring Size		Back Ring Size		Shaft		Rotation R - Right L - Left	Design
						045 050		014 020		1 - KEYED SAE CC			
						062 066		024 031		2 - KEYED NO SAE			
						072		035 038		3- SPLINED SAE C			
								042 045		4 - SPLINED SAE CC			

General Characteristics

Series	Max. Pressure PSI (MPa)	Speed r/min		Displ. in ³ /rev (cm ³ /rev)	Mounting Standard	Weight lb(kg)	Fluid Connection (SAE 4-bolt)	
		Max.	Min.				Pressure Ports (Front & Back)	Suction Inlet
T6ED	3500(24.5)	2200	600	2.90 ~ 13.86 (47.3 ~ 226.80)	SAE - C	184 (84)	(P1)=11/2", P2=11/4" S. FLG.	4" S. FLG.

Operating Specifications

Fluid Type	T6ED Continuous		T6ED Intermittent	
	Speed r/min	Pressure psi(MPa)	Speed r/min	Pressure psi(MPa)
Antiwear Petroleum Base	2200	3000(21.0)	2200	3500(24.5)
Non Antiwear Petroleum Base	2200	2500(17.5)	2200	3000(21.0)
Water in Oil Emulsions	1800	2000(14.0)	1800	2500(17.5)
Water Glycols	1800	2000(14.0)	1800	2500(17.5)
Synthetic Fluids	1800	2500(17.5)	1800	3000(21.0)