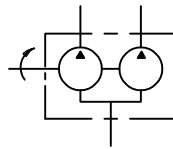
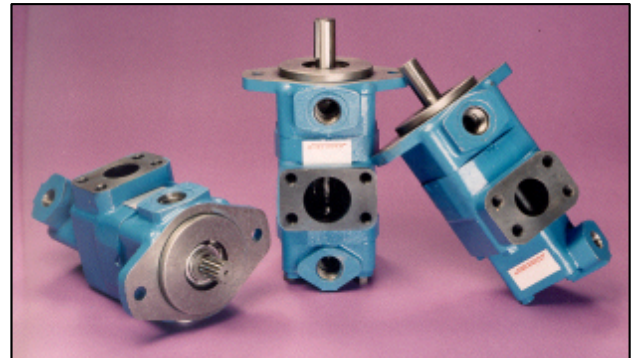


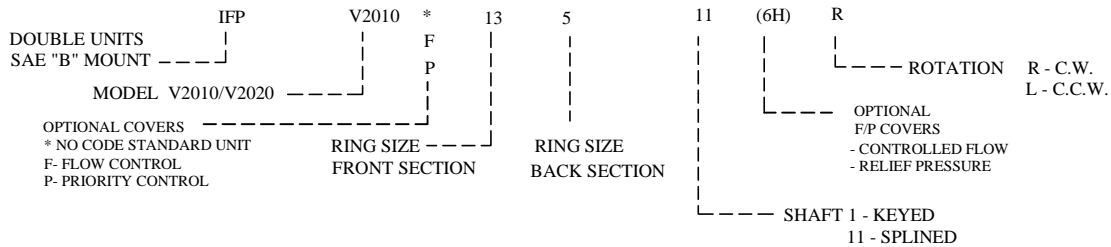
# IFP V2010/V2020 DOUBLE VANE PUMPS



- \* High Performance
- \* Low Cost
- \* Extended Life
- \* Versatile
- \* Compact
- \* Quiet Operation
- \* Hydraulic Balance



### ◆ Double Pump Ordering Specifications



Values based on using anti-wear type petroleum oil 150 SUS at 100°F and 0 PSI inlet pressure.

Model Series	FRONT SECTION						BACK SECTION						Weight lbs.
	Delivery USgpm @ 1200 rpm 100 psi	Displ. cu.in./ rev.	Max. rpm.	Max. psi.	Typical delivery USgpm @ max.speed & pressure	Typical input HP @ max.speed & pressure	Delivery USgpm @ 1200 rpm 100 psi	Displ. cu.in./ rev.	Max. rpm.	Max. psi.	Typical delivery USgpm @ max.speed & pressure	Typical input HP @ max.speed & pressure	
V2010	6	1.19	3000	2500	14.5	24.5	1	.20	3000	2500	2	4.5	30
	7	1.39	3000	2500	16.5	30	2	.40	3000	2500	4.7	9	
	8	1.62	2800	2500	17.5	32.5	3	.60	3000	2500	7	13.4	
	9	1.81	2800	2500	20	36	4	.80	3000	2500	9.5	18	
	11	2.22	2500	2500	23	37.5	5	1.00	3000	2500	12	21.5	
	12	2.38	2400	2500	23	36	6	1.19	3000	2500	14.5	24.5	
V2020	13	2.59	2400	2500	26	39	7	1.39	2800	2500	16	24	35
	6	1.19	3000	2500	14.5	24.5	6	1.19	3000	2500	14.5	24.5	
	7	1.39	3000	2500	16.5	30	7	1.39	3000	2500	16.5	30	
	8	1.62	2800	2500	17.5	32.5	8	1.62	2800	2500	17.5	32.5	
	9	1.81	2800	2500	20	36	9	1.81	2800	2500	20	36	
	11	2.22	2500	2500	23	37.5	11	2.22	2500	2500	23	37.5	
	12	2.38	2400	2500	23	36							
13	2.59	2400	2500	26	39								

IFP offers a complete line of economical, high performance fixed displacement double vane pumps that provide flows up to 26/23 US GPM per section for mobile and industrial applications. Balanced vane design provides quiet operation, high efficiency and long service life for the toughest applications. Units are designed for use with oil or synthetic fire-resistant fluid. A large combination of factory tested cartridges are available for fast, easy conversion and repairs.