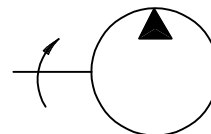


IFP T6C SERIES HIGH PERFORMANCE VANE PUMPS



High Performance in an Economical Package

International T6C fixed displacement vanepumps are engineered for higher operating pressures (4000 psi) and shaft speeds (2800 rpm) demanded by today's expanding Fluid Power Market. The T6C has an SAE "B" mount with a wide variety of displacements and keyed/splined shafts.



Features:

- * High Volumetric Efficiency
- * Double Lip Vane Design
- * Lower Noise Levels
- * Large Variety Displacements

IFP - T6C - 010 - 1 - R - N

Series	<table border="1" style="border-collapse: collapse; text-align: center;"> <tr><th>Ring</th><th>Size</th></tr> <tr><td>03</td><td>14</td></tr> <tr><td>05</td><td>17</td></tr> <tr><td>06</td><td>22</td></tr> <tr><td>08</td><td>25</td></tr> <tr><td>10</td><td>28</td></tr> <tr><td>12</td><td>31</td></tr> </table>	Ring	Size	03	14	05	17	06	22	08	25	10	28	12	31	Shaft	Rotation	Design
Ring	Size																	
03	14																	
05	17																	
06	22																	
08	25																	
10	28																	
12	31																	
		1-7/8 keyed 3-Spline SAE "B" 13th 4-Spline SAE "BB" 15th	R - Right L - Left															

General Characteristics

Series	Max. Pressure PSI (MPa)	Speed r/min		Displ. in ³ /rev (cm ³ /rev)	Mounting Standard	Weight lb(kg)	Fluid Connection (SAE 4-bolt)	
		Max.	Min.				Pressure Ports (Front & Back)	Suction Inlet
T6C	4000(28.0)	2800	600	.66 ~ 5.42 (10.8 ~ 88.7)	SAE - B	34 (15.5)	1" S. FLG.	1-1/2" S. FLG.

Operating Specifications

Fluid Type	T6C Continuous		T6C Intermittent	
	Speed r/min	Pressure psi(MPa)	Speed r/min	Pressure psi(MPa)
Antiwear Petroleum Base	2800	3500(24.5)	2800	4000(28.0)
Non Antiwear Petroleum Base	2800	2500(17.5)	2800	3000(21.0)
Water in Oil Emulsions	1800	2000(14.0)	1800	2500(17.5)
Water Glycols	1800	2000(14.0)	1800	2500(17.5)
Synthetic Fluids	1800	2500(17.5)	1800	3000(21.0)