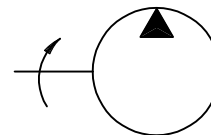


IFP T6E SERIES HIGH PERFORMANCE VANE PUMPS



High Performance in an Economical Package

International T6E fixed displacement vane pumps are engineered for higher operating pressures (3500 psi) and shaft speeds (2200 rpm) demanded by today's expanding Fluid Power Market. The T6E has an SAE "C" mount with a wide variety of displacements and keyed/splined shafts.



Features:

- * High Volumetric Efficiency
- * Lower Noise Levels
- * Double Lip Vane Design
- * Large Variety Displacements

IFP	-	T6E	-	066	-	1	-	R	-	N
		Series		Ring Size		Shaft		Rotation		Design
				045 062		1 - keyed (SAE-CC)		R - Right		
				050 066		2 - KEYED (NOT SAE)		L - Left		
				052 072		3 - SPLINED (SAE-C)				
						4 - SPLINED (SAE-CC)				

General Characteristics

Series	Max. Pressure PSI (MPa)	Speed r/min		Displ. in ³ /rev (cm ³ /rev)	Mounting Standard	Weight lb(kg)	Fluid Connection (SAE 4-bolt)	
		Max.	Min.				Pressure Ports (Front & Back)	Suction Inlet
T6E	3500(24.5)	2200	600	8.70 ~ 13.86 (142.4 ~ 227.7)	SAE - C	81.3 (37)	1 1/2" S. FLG.	3" S. FLG.

Operating Specifications

Fluid Type	T6E Continuous		T6E Intermittent	
	Speed r/min	Pressure psi(MPa)	Speed r/min	Pressure psi(MPa)
Antiwear Petroleum Base	2200	3000(21.0)	2200	3500(24.5)
Non Antiwear Petroleum Base	2200	2500(17.5)	2200	3000(21.0)
Water in Oil Emulsions	1800	2000(14.0)	1800	2500(17.5)
Water Glycols	1800	2000(14.0)	1800	2500(17.5)
Synthetic Fluids	1800	2500(17.5)	1800	3000(21.0)