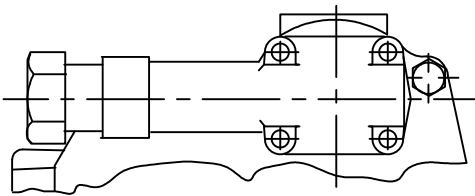
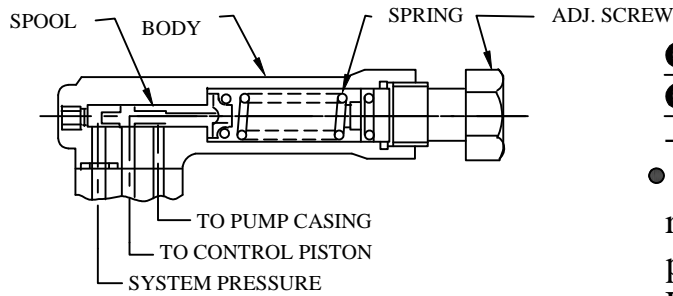


# OPTIONAL CONTROLS



## **Control "CM"(942159N)/ Control "C"(942158N)**

- Pressure compensator-

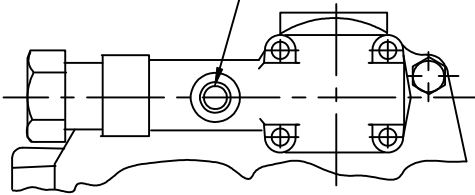
- "C" control maintains pump volume requirements of the system until a preselected operating pressure is reached. Pump displacement is then reduced to zero

"CM" range 250 - 1500 PSI

"C" range 250 - 3000 PSI

Available in frame sizes PVB5 to PVB45

.4375-20 UNF-2B thd.  
remote control port

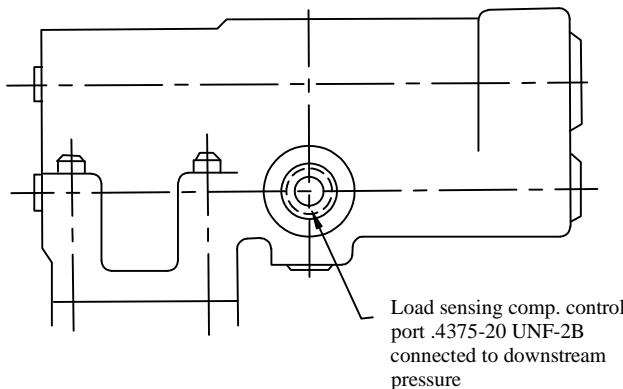


## **Control "CG"(942480N)**

- Remote pressure compensator-

- "CG" control operates same as "C" control except pressure setting can be adjusted using a remote relief valve (IFP-C175-\*-70) connected to the remote control port (SEE Page I1.1-I1.2).

Available in frame sizes PVB5 to PVB29



## **Control "CVP"(924069N)**

- Load sensing/pressure limiter-

- "CVP" compensator provides load sensing control to automatically adjust pump flow in response to a remote pressure signal. A compensator control is also incorporated to limit maximum working pressure.

Available in frame sizes PVB5 to PVB29