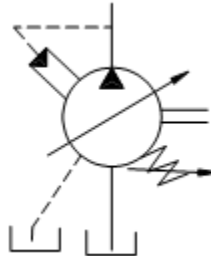


# IFP A10VSO VARIABLE AXIAL PISTON PUMPS



## Available sizes:

- 18 — 1.10 in<sup>3</sup>/rev [18 cm<sup>3</sup>/rev]
- 28 — 1.71 in<sup>3</sup>/rev [28 cm<sup>3</sup>/rev]
- 45 — 2.75 in<sup>3</sup>/rev [45 cm<sup>3</sup>/rev]
- 71 — 4.33 in<sup>3</sup>/rev [71 cm<sup>3</sup>/rev]
- 100—6.10 in<sup>3</sup>/rev [100 cm<sup>3</sup>/rev]
- 140—8.45 in<sup>3</sup>/rev [140 cm<sup>3</sup>/rev]



## NOMINAL PRESSURE

4000 psi [280 bar]

## PEAK PRESSURE

5100 psi [350 bar]

### FEATURES

- Variable volume piston pumps.
- Applied in open loop circuits
- Low noise level.
- Variety SAE & Metric mounting flanges.
- Good suction characteristics.
- Low noise level.
- High Power—Weight ratio
- Wide range of controls.
- Short Response time.
- Units can be piggybacked for multiple section assemblies
- Through drive available to adapt secondary pump.

### SECTIONAL VIEW

