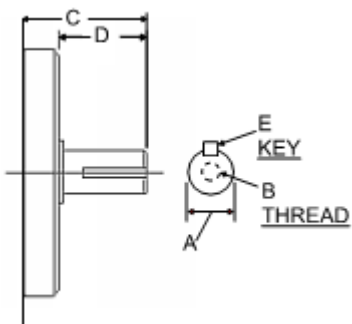


IFP A10VSO PISTON PUMPS SHAFT SPECIFICATIONS

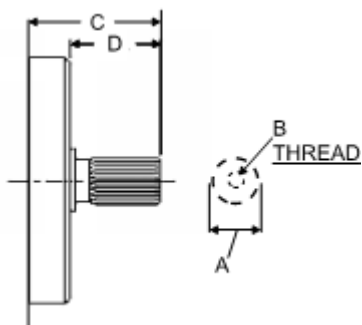


SHAFT CODE ** K ** PARALLEL WITH KEY



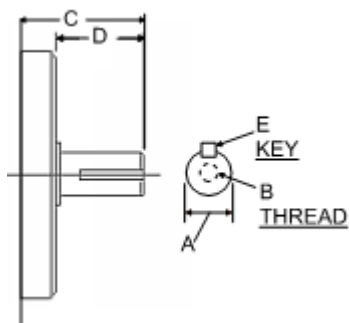
	A	B	C	D	E
SIZE: 18	DIA: 0.750 ~ 0.7492 [19.05 (-0.002)]	1/4"~20UNC.2B	1.61 (40)	1.36 (33.1)	.18 SQ X1.125 (4.76 X 28.6)
SIZE: 28	DIA: 0.875 ~ 0.874 [22.225 (-0.002)]	1/4"~20UNC.2B	1.63 (41)	1.26 (41)	.25 SQ X1.37 (6.38 X 35)
SIZE: 45	DIA: 1.00 ~ 0.9988 [25.4 (-0.002)]	1/4"~20UNC.2B	1.81 (45.9)	1.44 (41)	.25 SQ X1.37 (6.38 X 35)
SIZE: 71	DIA: 1.2500 ~ 1.2488 [31.75 (-0.003)]	5/16"~18UNC.2B	2.18 (55.4)	1.68 (41)	.312 SQ X1.62 (7.94 X 41.3)
SIZE: 100	DIA: 1.5000 ~ 1.4988 [38.1 (-0.003)]	7/16"~20UNC.2B	2.44 (61.9)	1.94 (51)	.375 SQ X1.96 (9.52 X 50)
SIZE: 140	DIA: 1.5000 ~ 1.4988 [38.1 (-0.003)]	7/16"~20UNC.2B	2.95 (75)	2.45 (62)	.4384 SQ 2.56 (11.11 X 65)

SHAFT CODE ** S ** SAE - SPLINE



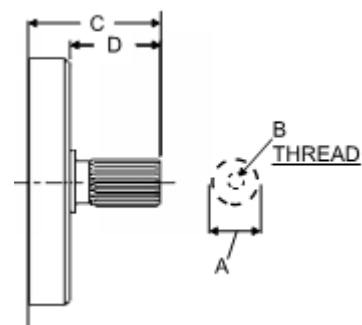
	A	B	C	D	E
SIZE: 18	3/4" DIA. 11 TOOTH 16/32 DP	1/4"~20UNC.2B	1.50 (38)	1.25 (22)	
SIZE: 28	7/8" DIA. 13 TOOTH 16/32 DP	1/4"~20UNC.2B	1.61 (41)	1.24 (25)	
SIZE: 45	1" DIA. 15 TOOTH 16/32 DP	1/4"~20UNC.2B	1.81 (45.9)	1.44 (30)	
SIZE: 71	1 1/4" DIA. 14 TOOTH 16/32 DP	5/16"~18UNC.2B	2.18 (55.4)	1.68 (39.5)	
SIZE: 100	1 1/2" DIA. 17 TOOTH 12/24 DP	7/16"~20UNC.2B	2.44 (61.9)	1.94 (43.6)	
SIZE: 140	1 3/4" DIA. 13 TOOTH 8/16 DP	5/8"~11UNC.2B	2.95 (75)	2.16 (55)	

SHAFT CODE ** P ** METRIC PARALLEL WITH KEY



	A	B	C	D	E
SIZE: 18	DIA: 18 mm		38	30	6mm SQ X 25
SIZE: 28	DIA: 22 mm		41	33.1	6mm SQ X 25
SIZE: 45	DIA: 25 mm		45.9	38	6mm SQ X 25
SIZE: 71	DIA: 32 mm		55.4	47.5	6mm SQ X 25
SIZE: 100	DIA: 40 mm		61.9	54	6mm SQ X 25
SIZE: 140	DIA: 45 mm		75	67	6mm SQ X 25

SHAFT CODE ** U ** SAE - SPLINE / REDUCED DIAMETER

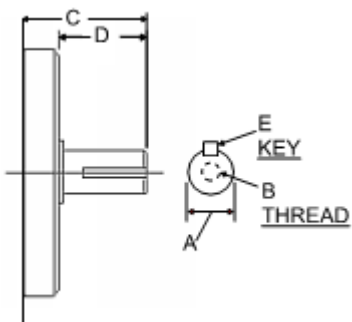


	A	B	C	D	E
SIZE: 18	5/8" DIA. 9 TOOTH 16/32 DP		1.25 (31.8)	1.00 (15.8)	
SIZE: 28					
SIZE: 45	7/8" DIA. 13 TOOTH 16/32 DP	1/4"~20UNC.2B	1.64 (41)	.98 (25)	
SIZE: 71					
SIZE: 100	1 1/4" DIA. 14 TOOTH 16/32 DP	5/16"~18UNC.2B	2.18 (55.4)	1.68 (39.5)	
SIZE: 140					

IFP A10VSO PISTON PUMPS SHAFT SPECIFICATIONS

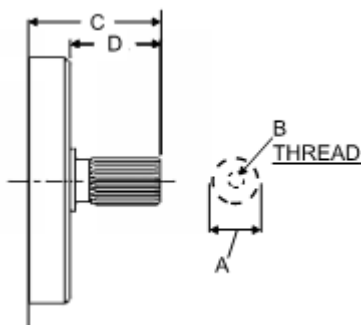


SHAFT CODE ** K ** PARALLEL WITH KEY



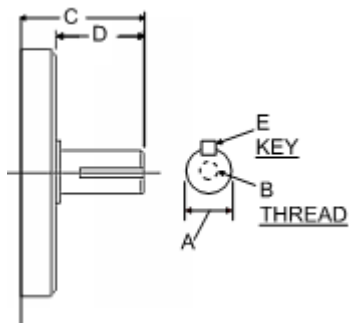
	A	B	C	D	E
SIZE: 18	DIA: 0.750 ~ 0.7492 [19.05 (-0.002)]	1/4"~20UNC.2B	1.61 (41)	1.30 (33.1)	.18 SQ X1.125 (4.76 X 28.6)
SIZE: 28	DIA: 0.875 ~ 0.874 [22.225 (-0.002)]	1/4"~20UNC.2B	1.61 (41)	1.61 (41)	.25 SQ X1.37 (6.38 X 35)
SIZE: 45	DIA: 1.00 ~ 0.9988 [25.4 (-0.002)]	1/4"~20UNC.2B	1.61 (41)	1.61 (41)	.25 SQ X1.37 (6.38 X 35)
SIZE: 71	DIA: 1.2500 ~ 1.2488 [31.75 (-0.003)]	5/16"~18UNC.2B	1.61 (41)	1.61 (41)	.312 SQ X1.62 (7.94 X 41.3)
SIZE: 100	DIA: 1.5000 ~ 1.4988 [38.1 (-0.003)]	7/16"~20UNC.2B	1.61 (41)	1.61 (41)	.375 SQ X1.96 (9.52 X 50)
SIZE: 140					

SHAFT CODE ** S ** SAE - SPLINE



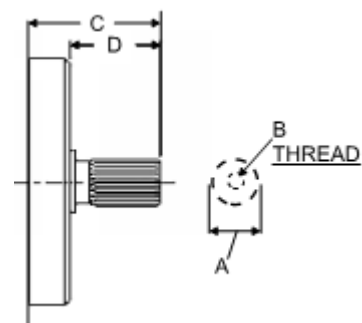
	A	B	C	D	E
SIZE: 18	3/4" DIA. 11 TOOTH 16/32 DP	1/4"~20UNC.2B	1.50 (38)	.87 (22)	
SIZE: 28	7/8" DIA. 13 TOOTH 16/32 DP	1/4"~20UNC.2B	1.64 (41)	.98 (25)	
SIZE: 45	1" DIA. 15 TOOTH 16/32 DP	1/4"~20UNC.2B	1.81 (45.9)	1.18 (30)	
SIZE: 71	1 1/4" DIA. 14 TOOTH 16/32 DP	5/16"~18UNC.2B	2.18 (55.4)	1.56 (39.5)	
SIZE: 100	1 1/2" DIA. 17 TOOTH 12/24 DP	7/16"~20UNC.2B	2.44 (61.9)	1.72 (43.6)	
SIZE: 140	1 3/4" DIA. 13 TOOTH 8/16 DP	5/8"~11UNC.2B	2.95 (75)	2.16 (55)	

SHAFT CODE ** P ** SAE - METRIC PARALLEL WITH KEY



	A	B	C	D	E
SIZE: 18	DIA: 18 mm		38	30	6mm SQ X 25
SIZE: 28	DIA: 22 mm		41	33.1	6mm SQ X 25
SIZE: 45	DIA: 25 mm		45.9	38	6mm SQ X 25
SIZE: 71	DIA: 32 mm		55.4	47.5	6mm SQ X 25
SIZE: 100	DIA: 40 mm		61.9	54	6mm SQ X 25
SIZE: 140	DIA: 45 mm		75	67	6mm SQ X 25

SHAFT CODE ** U ** SAE - SPLINE / REDUCED DIAMETER



	A	B	C	D	E
SIZE: 18	5/8" DIA. 9 TOOTH 16/32 DP		1.24 (31.8)	.62 (15.8)	
SIZE: 28					
SIZE: 45	7/8" DIA. 13 TOOTH 16/32 DP	1/4"~20UNC.2B	1.64 (41)	.98 (25)	
SIZE: 71					
SIZE: 100	1 1/4" DIA. 14 TOOTH 16/32 DP	5/16"~18UNC.2B	2.18 (55.4)	1.56 (39.5)	
SIZE: 140					