

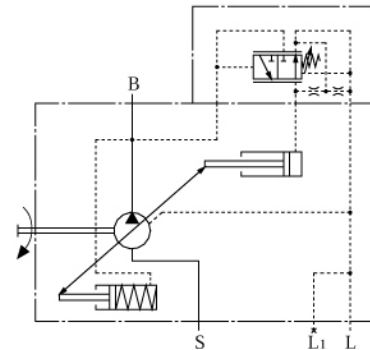
IFP A10VSO PISTON PUMPS PRESSURE CONTROLS



DR - PRESSURE CONTROL

DR pressure control maintains a constant system pressure at the outlet of the pump. The pump supplies flow until the the preset adjustment pressure setting is reached. Pressure setting may be steplessly set at the pilot valve .

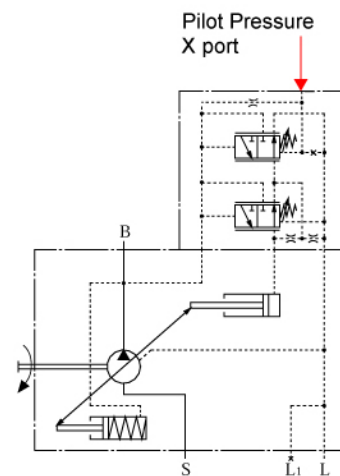
Setting range: 290 PSI (20 bar) ~ 4000 PSI (280 bar)



DRG - PRESSURE CONTROL REMOTE

DRG pressure control function and design are the same as DR control with the added feature of remote adjustment of the control pressure with the use of an external relief valve. External relief is connected to the X port on the pressure control and the differential pressure at the control spool is set as standard to 290 PSI (20 bar) pilot flow will be .4 gpm (1.5 L/min).

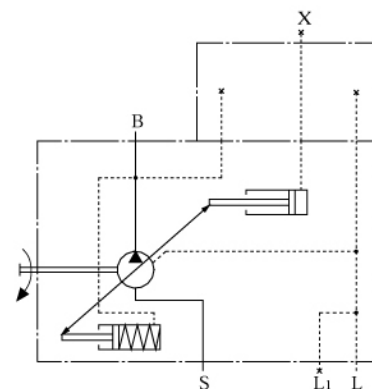
Setting range: 290 PSI (20 bar) ~ 4000 PSI (280 bar)



DG - TWO POINT, DIRECT CONTROL

DG pressure control allows pump flow to be switched from maximum flow to minimum flow by supplying an external pilot switching pressure at port X.

Pump can only be switched between maximum & minimum flow , a minimum pilot pressure of 725 PSI is required. The actual switching pilot pressure required will be dependent on the system operating pressure at the outlet of the pump



Ports B - Pressure port
S - Inlet port
L L1 - Case drain ports
X - Pilot pressure port