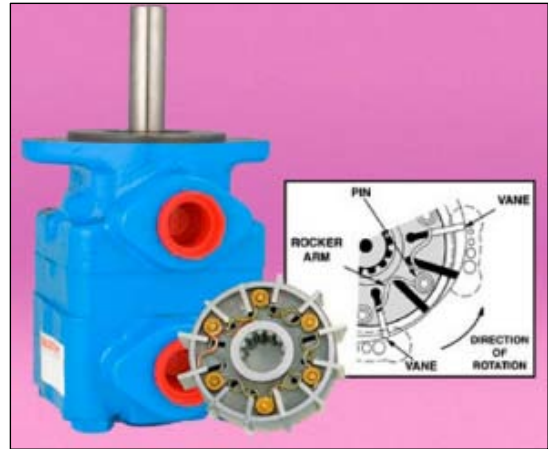
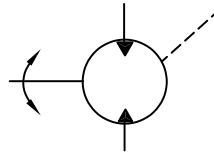


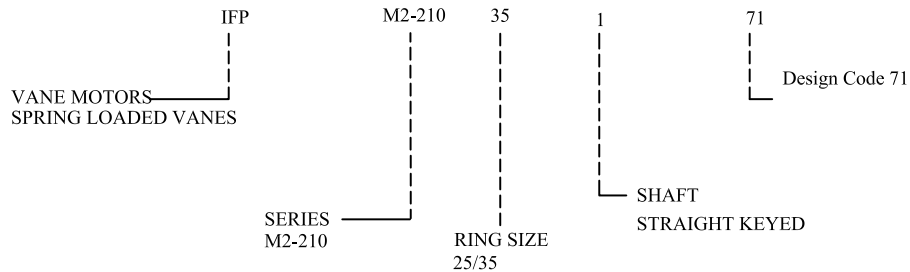
# IFP VANE MOTOR M2-210



- \* Spring loaded vanes provide improved efficiency  
smooth operation
- \* Higher operating pressure & speed  
(2500 PSI - 2800 RPM)
- \* Wide operating speed range  
(100 - 2800 RPM)
- \* Pressure balance for long service life
- \* Bi rotational
- \* Low Noise



### ◆ Motor Ordering Specifications



### OPERATING SPECIFICATIONS

Model Series	Ring Size in/lb Torque per 100 PSI	Displacement cu. in/rev	US GPM req'd @ 1200 rpm	Maximum Torque lb. in @ max pressure	Maximum Speed & Pressure	Weight lbs
M2-210	25	1.51	8	500	2200 rpm/psi	21
	35	2.16	12	612.5	1800/1750 psi	21

IFP offers M2-210 spring loaded vane motors for industrial and mobile applications. The wide range of speeds and high pressure make them ideal for most motor applications. Motors are constructed with spring loaded vanes offering smooth operation over a wide speed range. Motors can be reversed or stalled under load without damage to the unit when proper relief protection is applied. A full size unrestricted drain line must be connected directly from the motor case drain to the reservoir return located below the lowest fluid level in the system. Factory tested cartridge kits are available, providing efficient field serviceability, avoiding costly down time and increased productivity.