

- 

Diagram illustrating the relationship between SERIES, RING SIZE, SHAFT, and DESIGN CODE:

- SERIES** (25MN, 35MN, 45MN) connects to **IFP** and **45MN**.
- IFP** and **45MN** connect to **185**.
- 185** connects to **RING SIZE (SEE SPEC. BELOW)**.
- 20** connects to **SHAFT** (1=STRAIGHT KEYED, 11=SPLINED).
- 71** connects to **DESIGN CODE**.

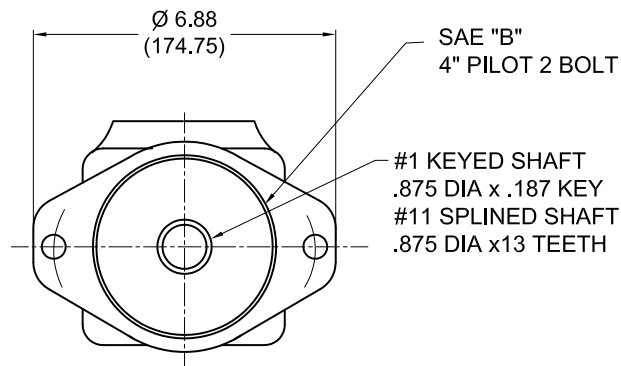
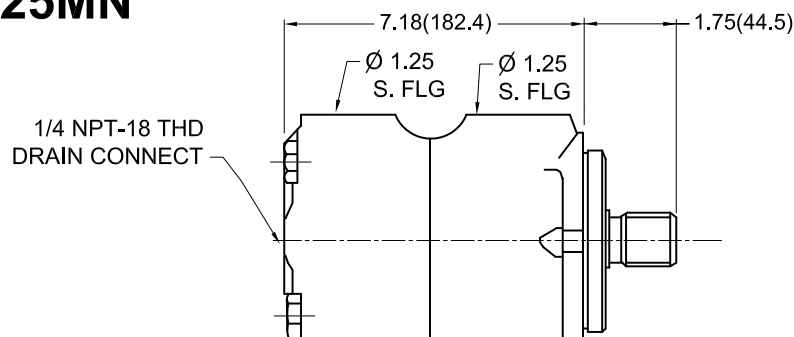
MODEL SERIES	Ring Size <small>Torque lb. in. per 100 PSI</small>	Displ. cu.in/rev	USgpm req'd @1200 rpm	Maximum Torque lb. in @ Max. pressure	Maximum Speed & pressure	Approx. weight lbs.
25MN	42	2.68	13.5	1030	4000 rpm @500 psi	40
	55	3.52	18.0	1340		
	65	4.19	21.5	1610		
35MN	80	5.10	26.0	1975	3000 rpm @2500 psi	64
	95	6.12	31.5	2345		
	115	7.44	38.5	2850		
45MN	130	8.42	43.5	3250		85
	155	9.96	51.5	3900		
	185	11.79	61.0	4475		
50MN	220	14.11	80	4850	3200 rpm @ 500 psi	160
	255	16.36	94	5000	2400 rpm @2250 psi	
	300	19.35	110	5950		

IFP offers a complete line of high performance vane motors for industrial and mobile applications. The wide speed range with maximum speeds to 3000 RPM at full pressure and 4000 RPM at low pressure make them ideal for most motor applications. Inlet and outlet ports can be pressurized simultaneously without affecting service life or the smooth operation of the motor, this feature is beneficial when motors are rapidly reversed or installed in series. Factory tested cartridge kits are readily available, providing efficient field serviceability, avoiding costly down time and increased productivity. These units can operate on a wide variety of fluids.

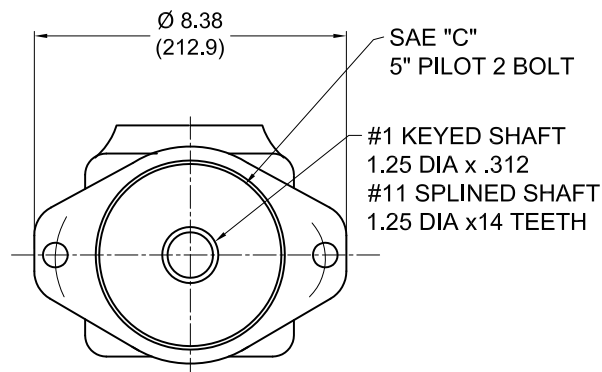
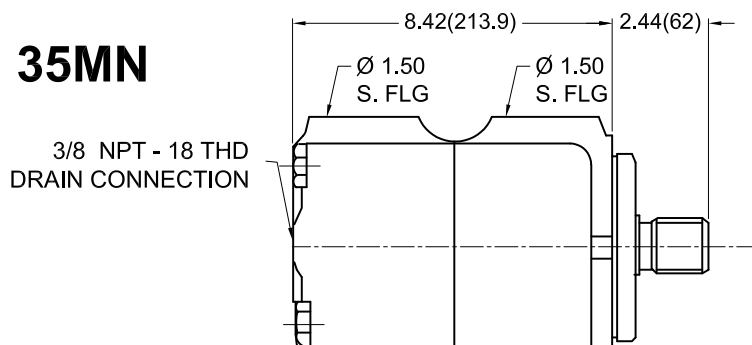
# IFP 25MN/35MN/45MN/50MN VANE MOTOR INSTALLATION/DIMENSIONS



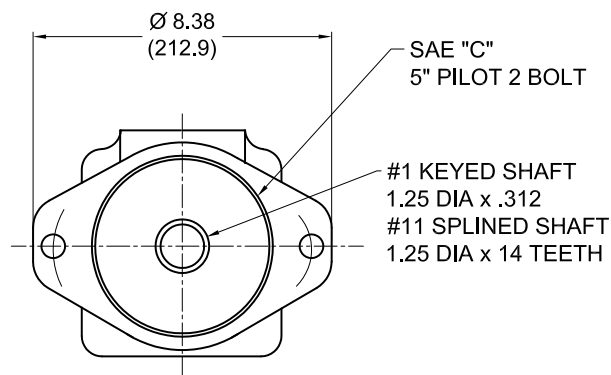
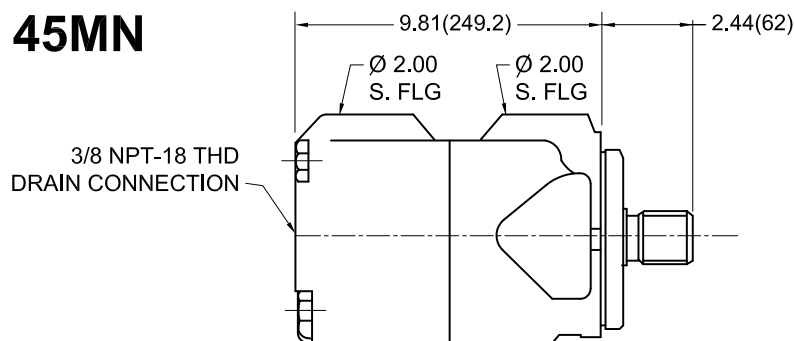
## 25MN



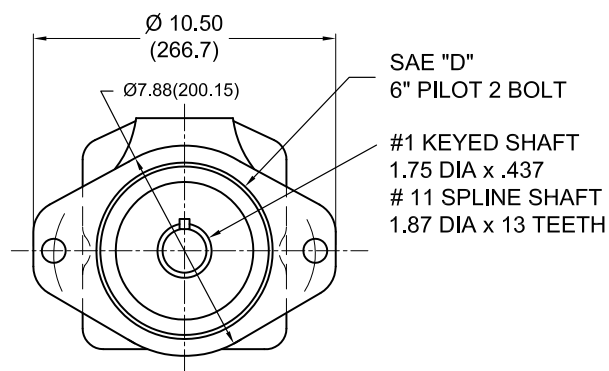
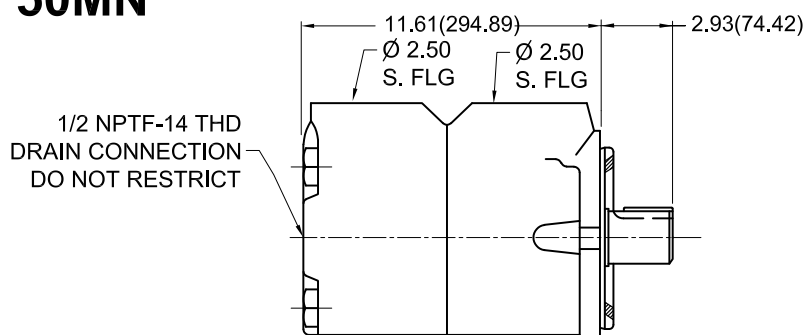
## 35MN



## 45MN



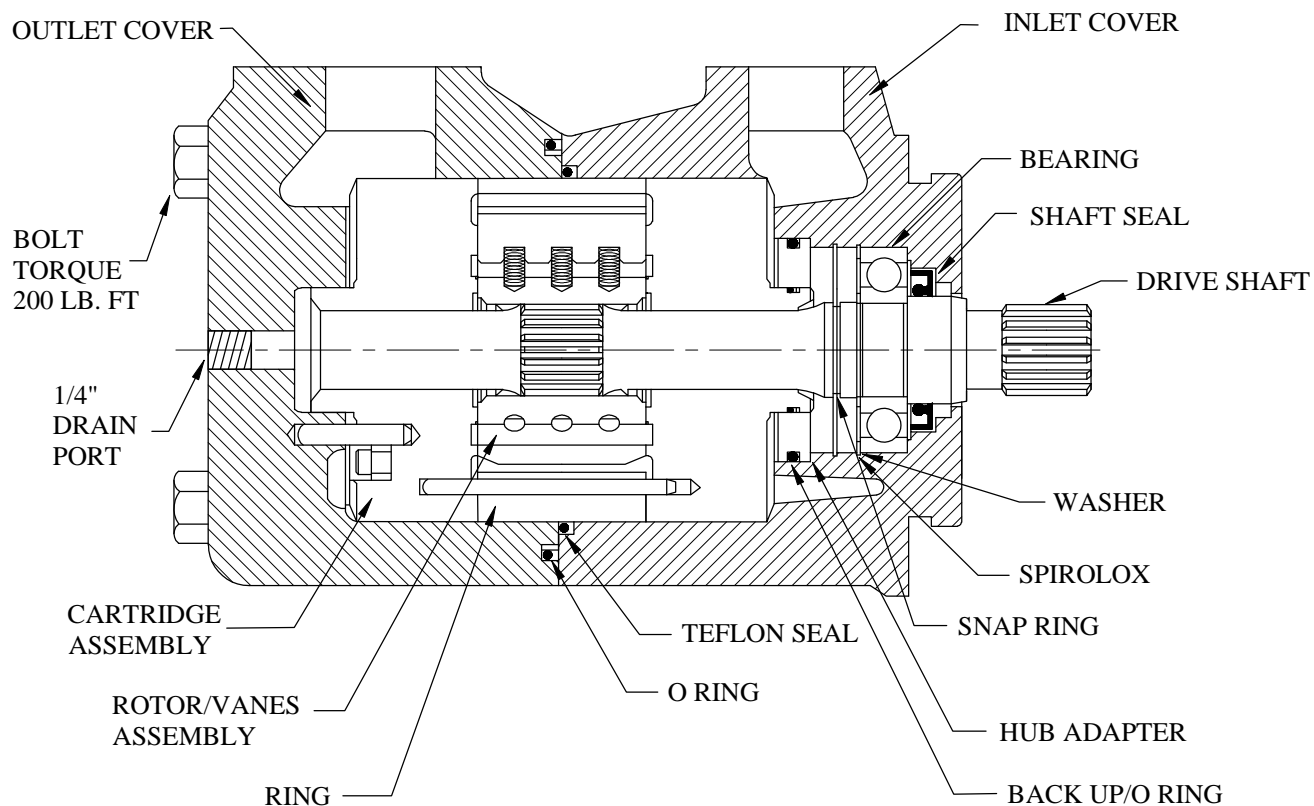
## 50MN



# IFP 25M VANE MOTOR



## Service Parts Information



312139N	INLET COVER
312140N	OUTLET COVER
312153N	SHAFT #I KEYED
312154N	SHAFT #II SPLINE
1705N	BEARING STANDARD
232750N	BEARING HEAVY
312152N	HUBADAPTER

Note - Rotor/Vanes sold only as an assenbly.

190362N	WASHER
191400N	SPIROLOX
120128N	SNAP RING
394976N	SHAFT SEAL
429286N	SHAFT SEAL VITON
923157N	SEAL KIT

313426N	RING 25M 42
313427N	RING 25M 55
313428N	RING 25M 65
923160N	CARTRIDGE 25M 42
923161N	CARTRIDGE 25M 55
923162N	CARTRIDGE 25M 65

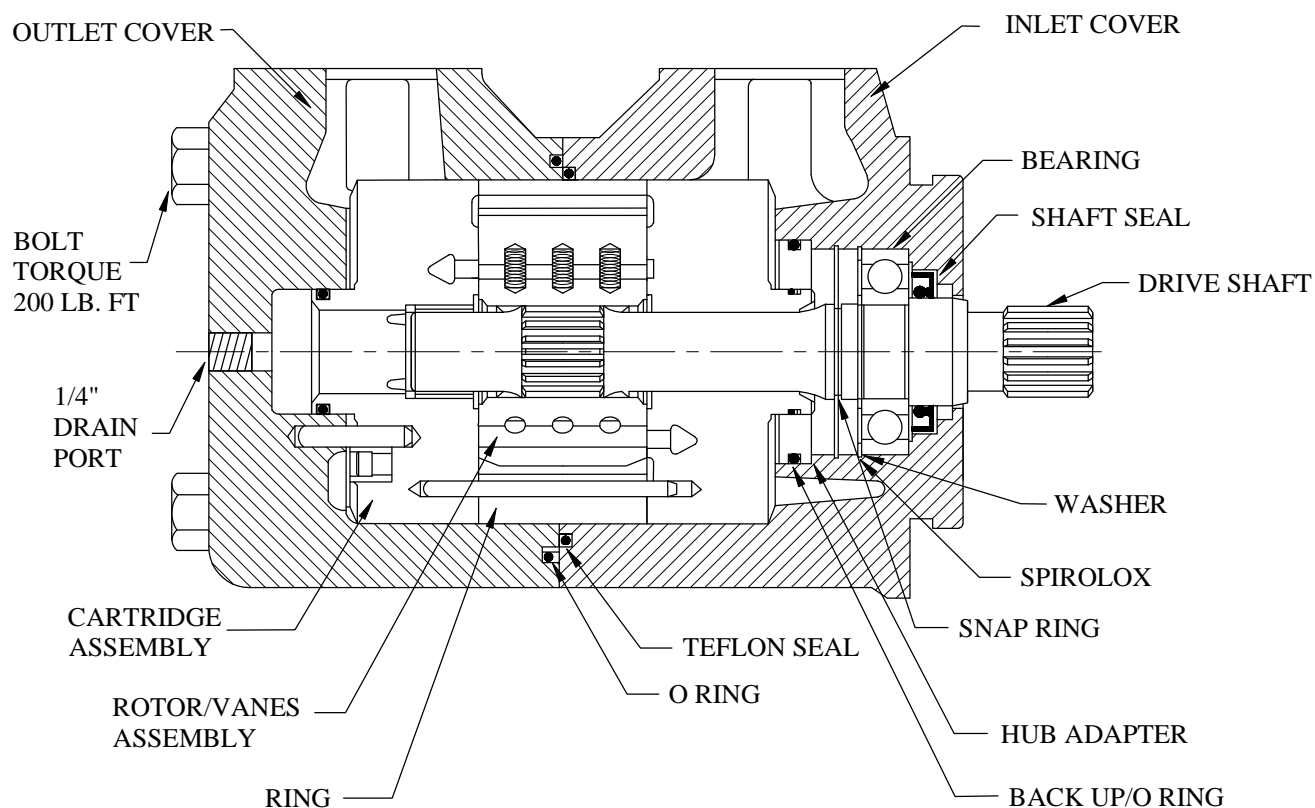
### WARNING:

Connect Case Drain Port to reservoir assuring no back Pressure on Return line.

# IFP 35M VANE MOTOR



## Service Parts Information



Note - Rotor/Vanes sold only as an assembly.

312053N	INLET COVER
312054N	OUTLET COVER
310872N	SHAFT #I KEYED
310873N	SHAFT #II SPLINE
14654N	BEARING STANDARD
16058N	BEARING HEAVY
312056N	HUBADAPTER

274382N	WASHER
237832N	SPIROLOX
119982N	SNAP RING
394973N	SHAFT SEAL
429284N	SHAFT SEAL VITON
923163N	SEAL KIT

310870N	RING 35M 80
310868N	RING 35M 95
310871N	RING 35M 115
923165N	CARTRIDGE 35M 80
923166N	CARTRIDGE 35M 95
923167N	CARTRIDGE 35M 115

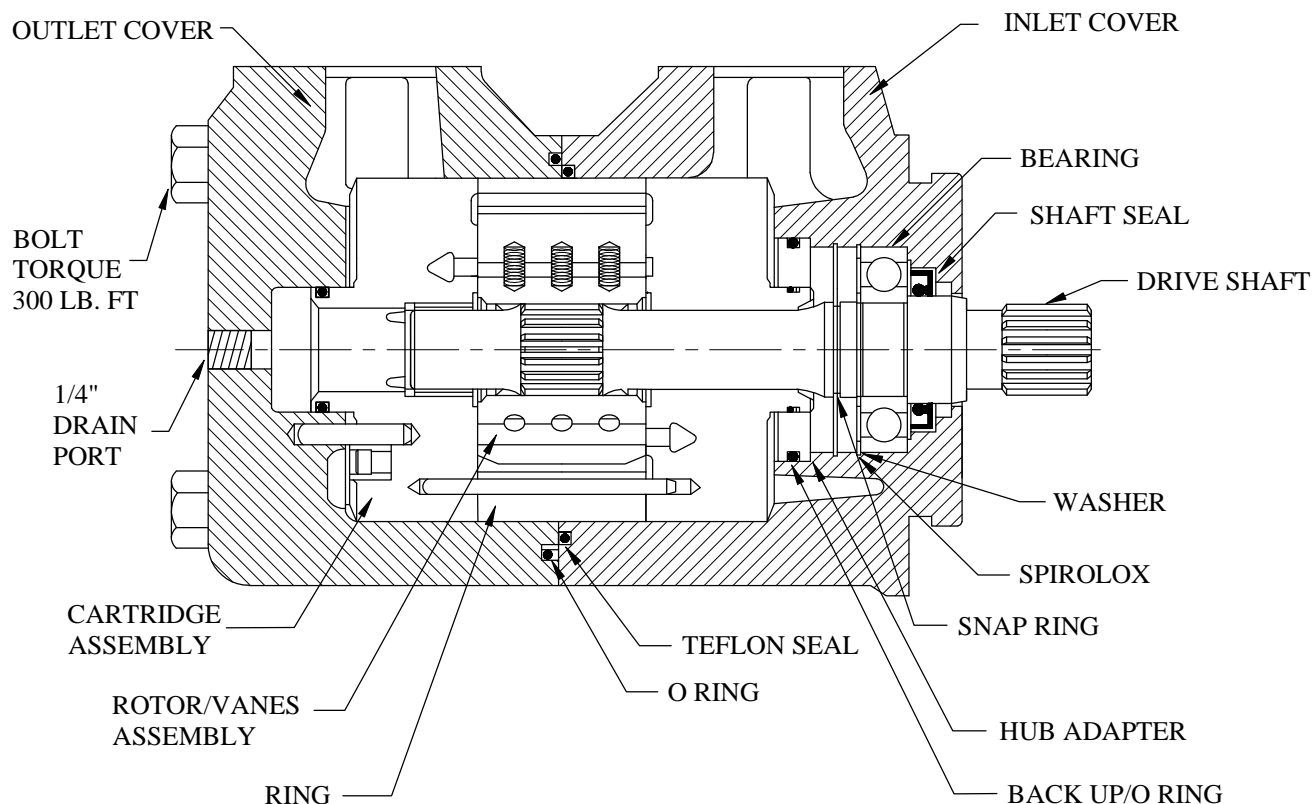
### WARNING:

Connect Case Drain Port to reservoir assuring no back Pressure on Return line.

# IFP 45M VANE MOTOR



## Service Parts Information



Note - Rotor/Vanes sold only as an assembly.

308814N	INLET COVER
308813N	OUTLET COVER
309404N	SHAFT #I KEYED
309405N	SHAFT #II SPLINE
8618N	BEARING STANDARD
309926N	BEARING HEAVY
311145N	HUBADAPTER

193220N	WASHER
193144N	SPIROLOX
102949N	SNAP RING
394974N	SHAFT SEAL
429285N	SHAFT SEAL VITON
923106N	SEAL KIT

308816N	RING 45M 130
309416N	RING 45M 155
308815N	RING 45M 185
923111N	CARTRIDGE 45M 130
923110N	CARTRIDGE 45M 155
923109N	CARTRIDGE 45M 185

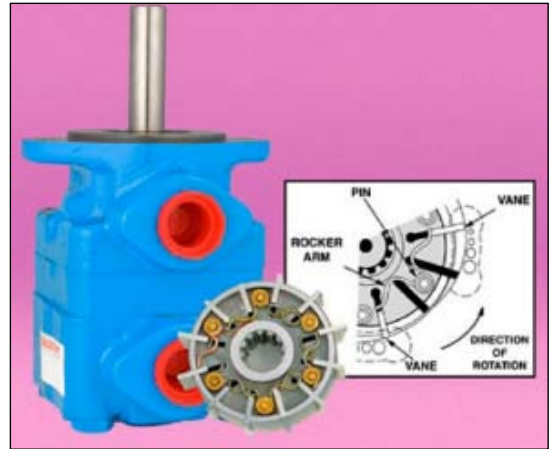
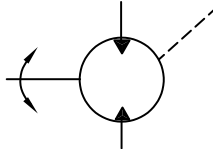
### WARNING:

Connect Case Drain Port to reservoir assuring no back Pressure on Return line.

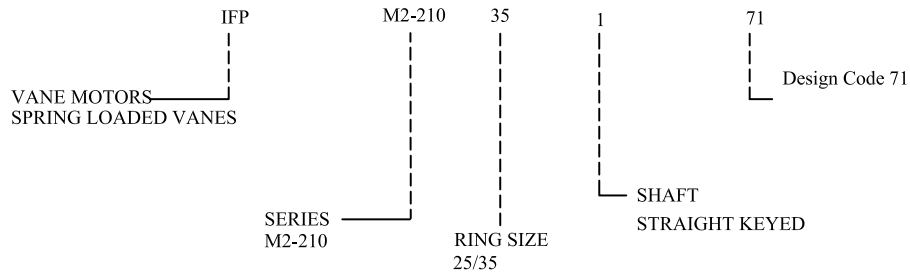
# IFP VANE MOTOR M2-210



- \* Spring loaded vanes for improved/smooth operation
- \* Higher pressure & speed (2500 PSI/2800 RPM)
- \* Wide operating speed range (100-2800 RPM)
- \* Pressure balanced for long service life
- \* Bi rotational
- \* Low noise



## ◆ Motor Ordering Specifications

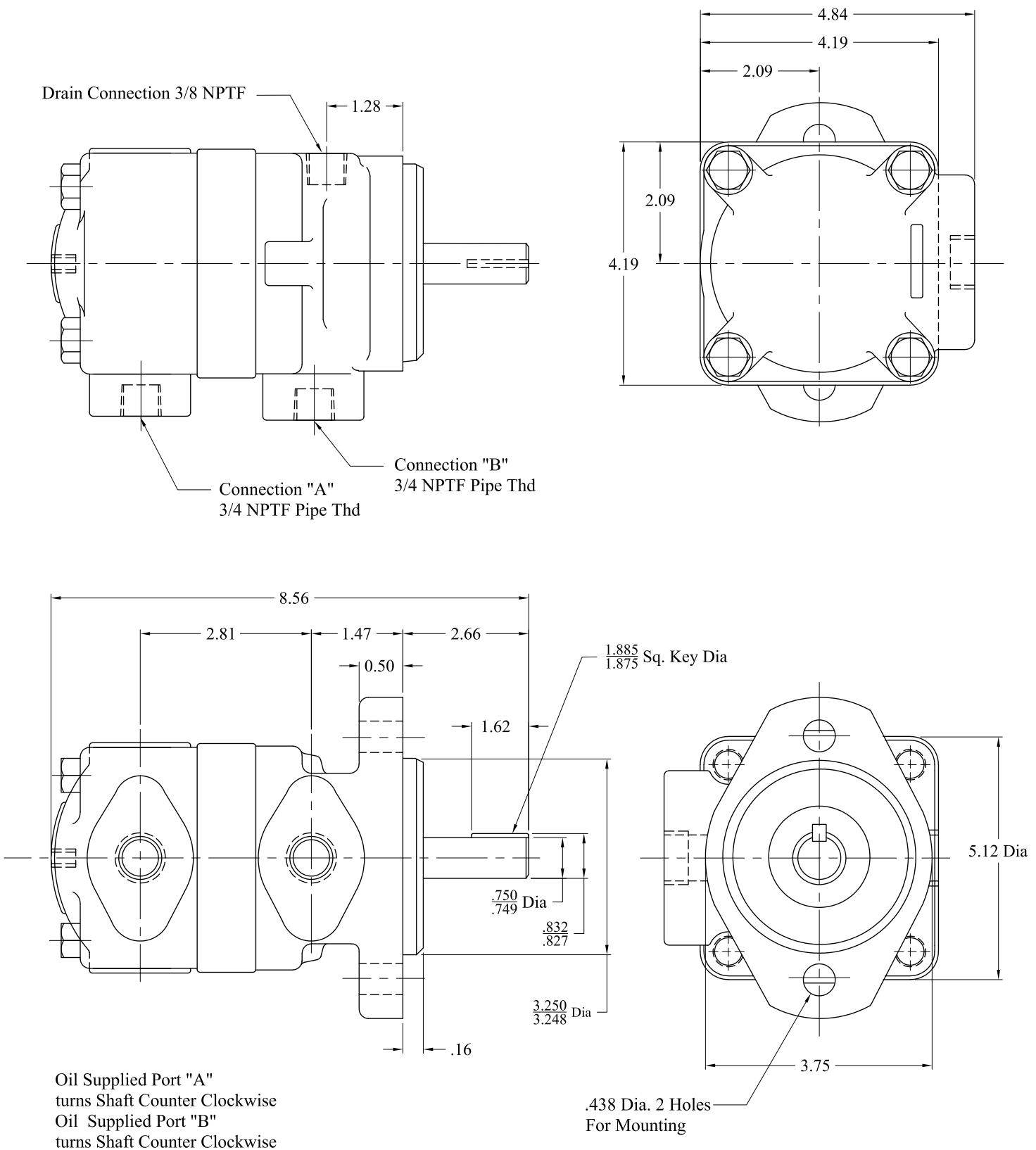


## OPERATING SPECIFICATIONS

Model Series	Ring Size in/lb Torque per 100 PSI	Displacement cu. in/rev	US GPM req'd @ 1200 rpm	Maximum Torque lb. in @ max pressure	Maximum Speed & Pressure	Weight lbs
M2-210	25	1.51	8	500	2200 rpm/psi	21
	35	2.16	12	612.5	1800/1750 psi	21

IFP offers M2-210 spring loaded vane motors for industrial and mobile applications. The wide range of speeds and pressure make them ideal for most motor applications. Motors are constructed with spring loaded vanes offering smooth operation over a wide speed range. Motors can be reversed or stalled under load without damage to the unit when proper relief protection is applied. A full size unrestricted drain line must be connected directly from case drain to reservoir return located below the lowest fluid level in the system. Factory tested cartridge kits are available, providing efficient field serviceability, avoiding costly down time and increased productivity.

# IFP M2-210 VANE MOTOR DIMENSIONS DRAWING



Dimensions inches