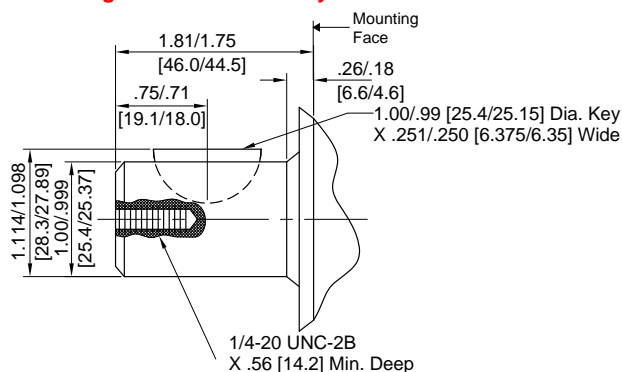


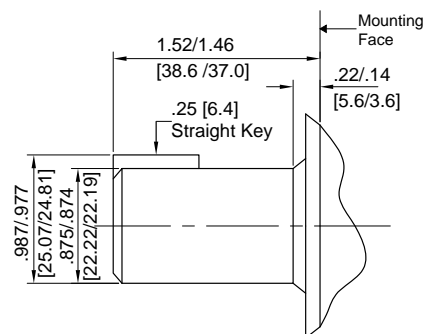
# IFP BMG MOTOR DRIVE SHAFT SPECIFICATIONS



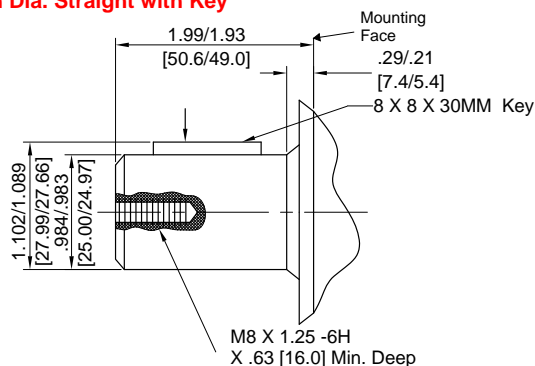
**Code: K \*\* Standard shaft \*\***  
**1 Inch Dia. Straight with Woodruff Key**



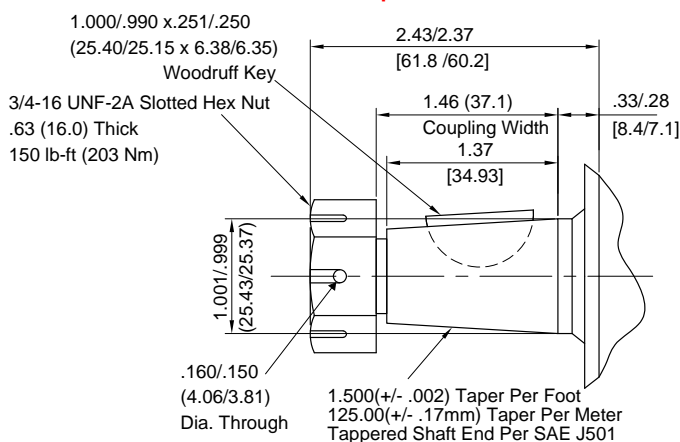
**Code: D \*\* Special Order \*\***  
**7/8 Inch Dia. Straight Shaft with Key**



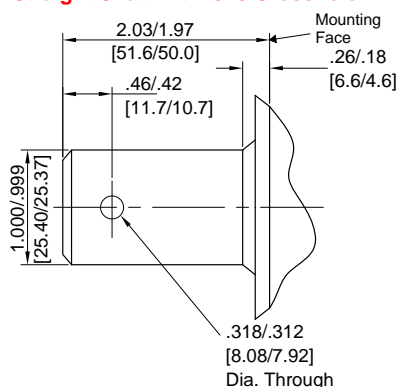
**Code: A \*\* Special Order \*\***  
**1 Inch Dia. Straight with Key**



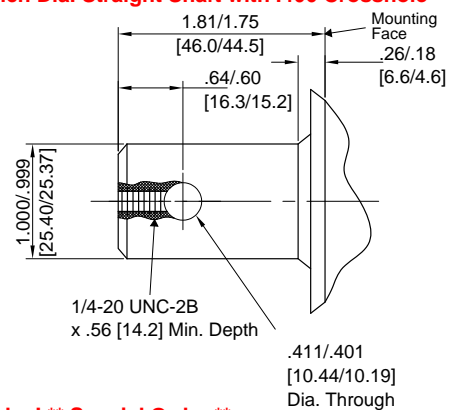
**Code: T2 \*\* Special Order \*\***  
**1 Inch Dia. Tapered Shaft With Woodruff Key & Nut**



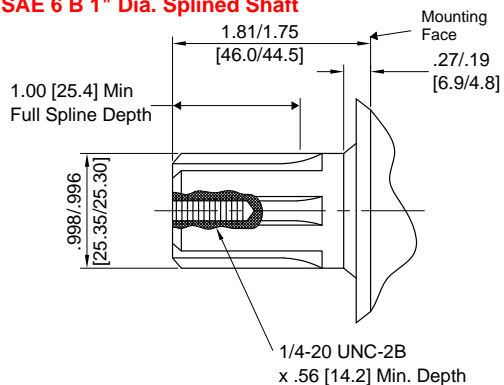
**Code: H1 \*\* Special Order \*\***  
**1 Inch Dia. Straight Shaft with .315 Crosshole**



**Code: H \*\* Special Order \*\***  
**1 Inch Dia. Straight Shaft with .406 Crosshole**



**Code: S \*\* Special Order \*\***  
**SAE 6 B 1" Dia. Splined Shaft**



**Code: I \*\* Special Order \*\***  
**7/8" Dia. 13 tooth SAE-B Splined Shaft**

