

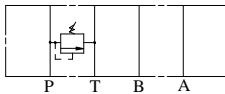
IFP MRV03 RELIEF VALVE MODULE



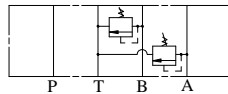
- ISO4401-03 SIZE/NFPA D03
- ADJUSTABLE STANDARD MICROMETER KNOB
- EXTREMELY PRECISE CONTROL
- TWO STAGE BALANCE PISTON
- FOUR PRESSURE RANGES AVAILABLE
- LOW PRESSURE OVERRIDE



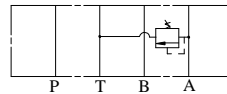
MRV-03-P



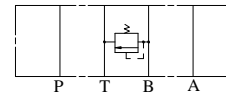
MRV-03-W



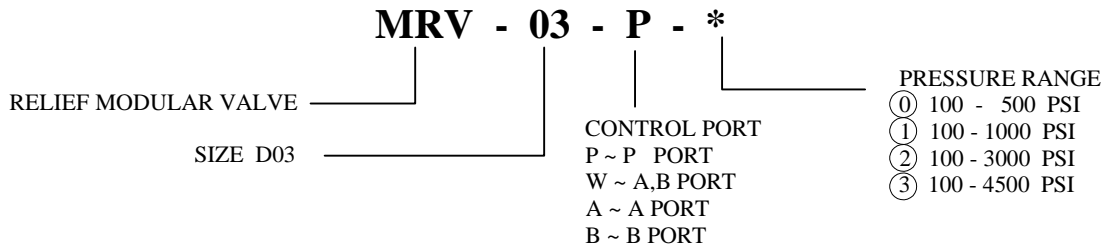
MRV-03-A



MRV-03-B



ORDERING CODE



SPECIFICATIONS

TYPES	SIZE	MAX. PRESSURE (PSI)	RATED FLOW (GPM)	PRESSURE RANGE (PSI)	WEIGHT lbs
MRV-03-P-*	D03	4500 PSI	15	① 100 - 500 PSI	3.30
MRV-03-W-*				① 100 - 1000 PSI	5.07
MRV-03-A-*				② 100 - 3000 PSI	3.50
MRV-03-B-*				③ 100 - 4500 PSI	3.50

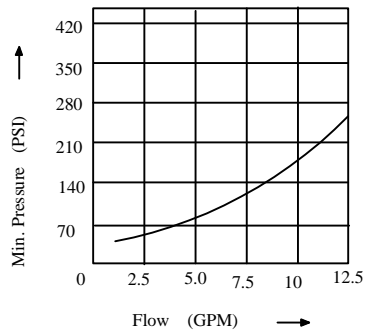
IFP offer a balanced piston modular relief valve, designed for use in applications requiring an adjustable regulating valve to limit the pressure in a hydraulic circuit to a predetermined maximum. The use of stackable modules offers cost effective, compact hydraulic systems in which the modules are "sandwiched" between a directional valve and standard mounting surface.

IFP MRV03 RELIEF VALVE MODULE

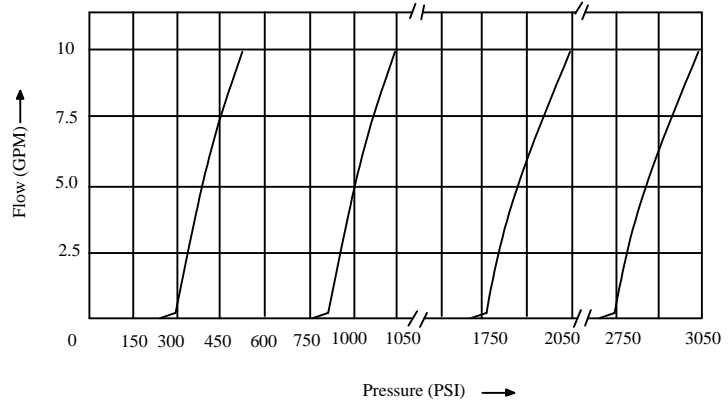


PERFORMANCE CURVES Viscosity (100-150 SUS)

MRV-03-*- 1
Flow-Min. Pressure characteristic

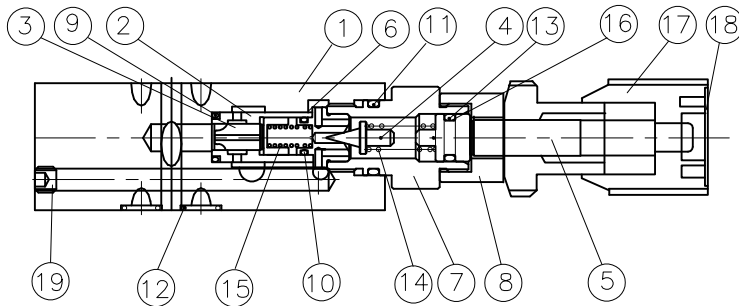


MRV-03-*- 1
Pressure - Flow characteristic



CROSS SECTION DIAGRAM

MRV-03-P-*



NO.	DESCRIPTION
1	BODY
2	SLEEVE
3	SPOOL
4	POPPET
5	SCREW
6	SEAT
7	RETAINER
8	BUSHING
9	O-RING
10	O-RING
11	O-RING
12	O-RING
13	O-RING
14	SPRING
15	SPRING
16	BACK-UP RING
17	KNOB UNIT
18	PLATE
19	PLUG

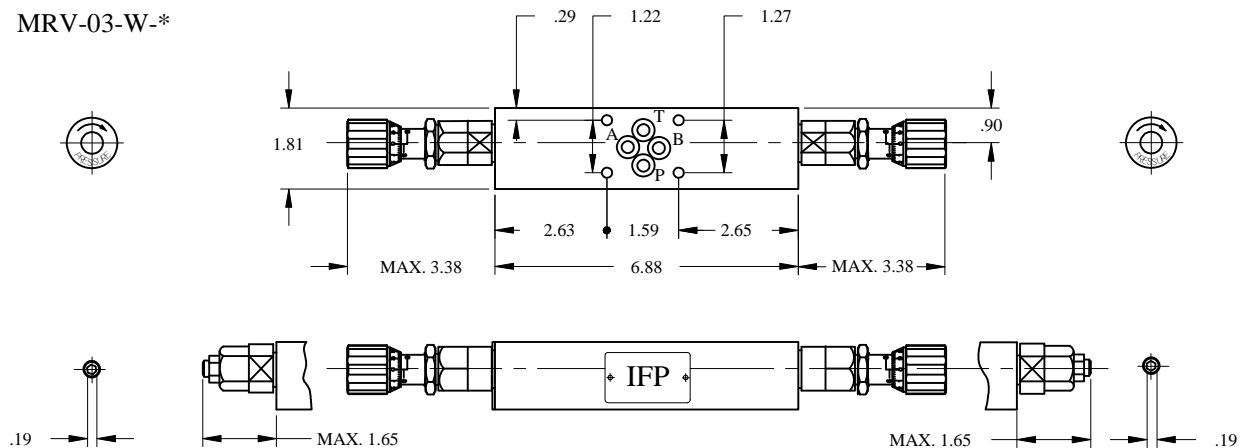
NO.	PARTS NAME	PARTS NO.	Q'TY			
			P	W	A	B
9	O-RING	P14, 70°	1	2	1	1
10	O-RING	AS568-013,90°	1	2	1	1
11	O-RING	P18,90°	1	2	1	1
12	O-RING	P9,90°	4	4	4	4
13	O-RING	P10A,70°	1	2	1	1

IFP MRV03 RELIEF VALVE MODULE

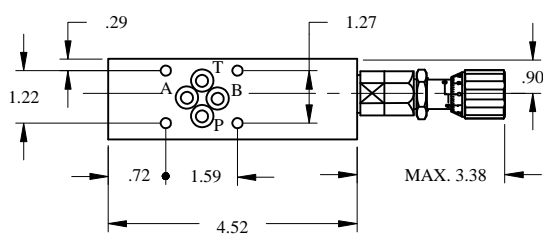


DIMENSIONS

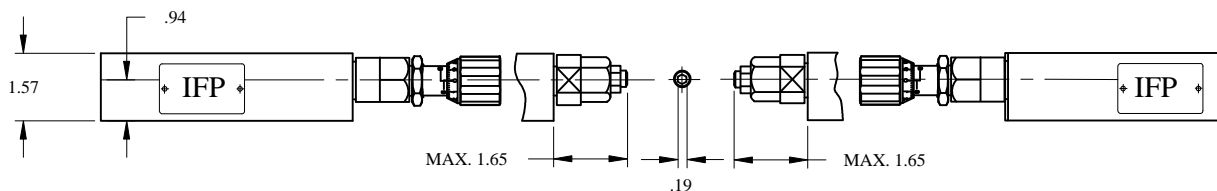
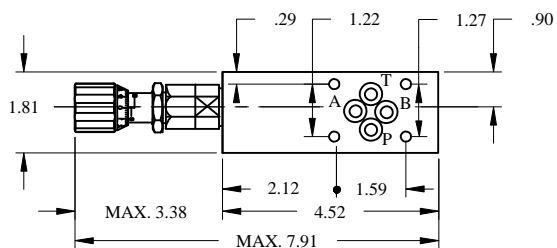
MRV-03-W-*



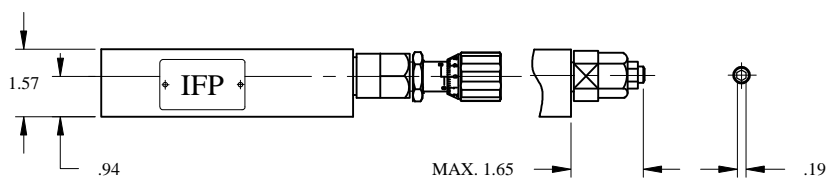
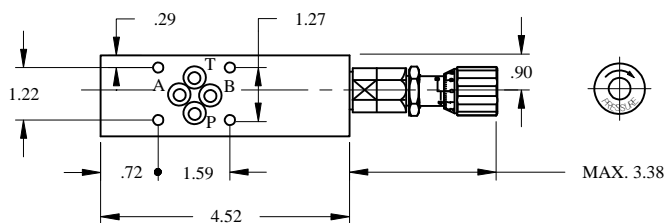
MRV-03-P-*



MRV-03-A-*



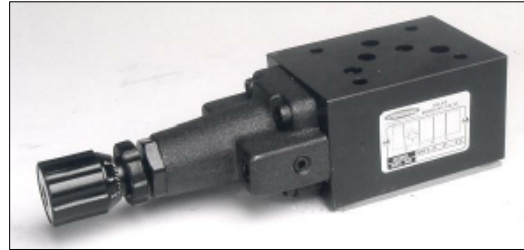
MRV-03-B-*



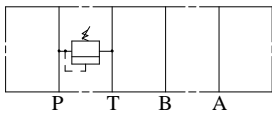
IFP MRV05 RELIEF VALVE MODULE



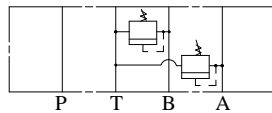
- ISO4401-05 SIZE/NFPA D05
- ADJUSTABLE STANDARD MICROMETER KNOB
- EXTREMELY PRECISE CONTROL
- TWO STAGE BALANCE PISTON
- FOUR PRESSURE RANGES AVAILABLE
- LOW PRESSURE OVERRIDE



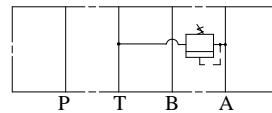
MRV-05-P



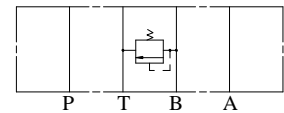
MRV-05-W



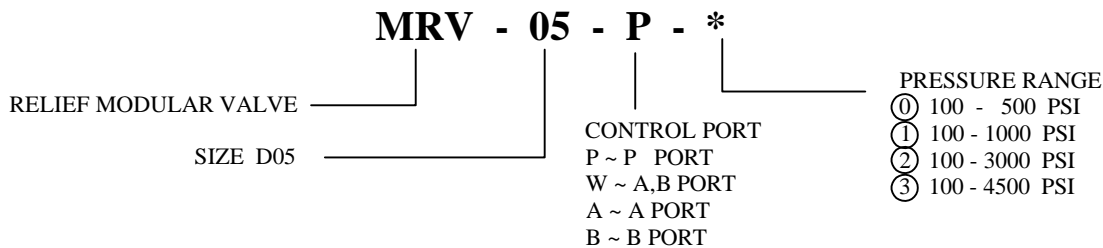
MRV-05-A



MRV-05-B



ORDERING CODE



SPECIFICATIONS

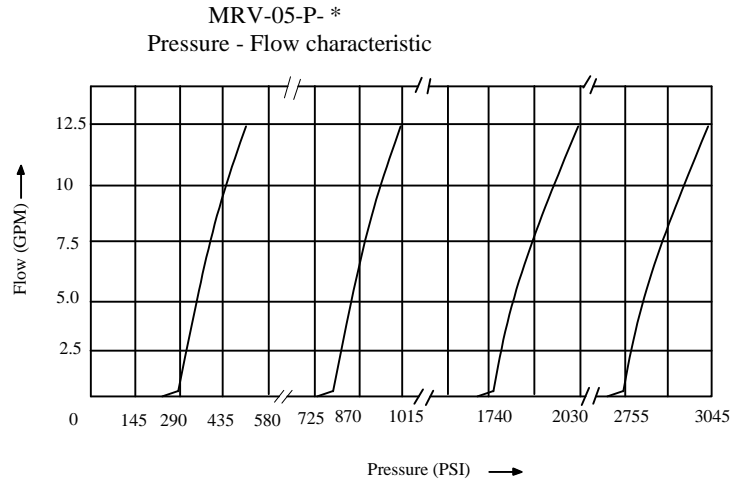
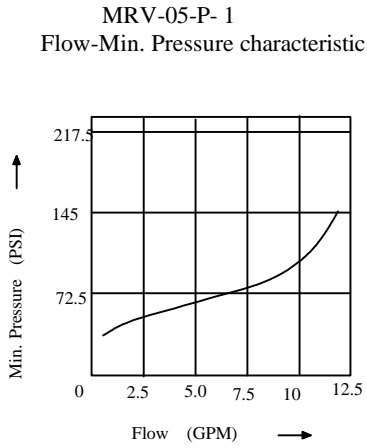
TYPES	SIZE	MAX. PRESSURE (PSI)	RATED FLOW (GPM)	PRESSURE RANGE (PSI)	WEIGHT lbs
MRV-05-P-*	D05	4500 PSI	30	① 100 - 500 PSI	6.83
MRV-05-W-*				① 100 - 1000 PSI	8.60
MRV-05-A-*				② 100 - 3000 PSI	6.83
MRV-05-B-*				③ 100 - 4500 PSI	6.83

IFP offer a balanced piston modular relief valve, designed for use in applications requiring an adjustable regulating valve to limit the pressure in a hydraulic circuit to a predetermined maximum. The use of stackable modules offers cost effective, compact hydraulic systems in which the modules are "sandwiched" between a directional valve and standard mounting surface.

IFP MRV05 RELIEF VALVE MODULE

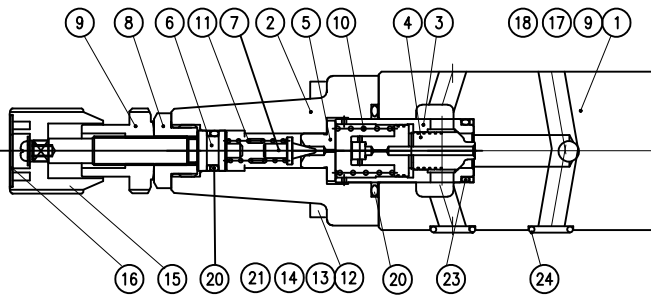


PERFORMANCE CURVES Viscosity (100-150 SUS)



CROSS SECTION DIAGRAM

MRV-05-P-* -10



NO.	DESCRIPTION
1	BODY
2	COVER
3	SPOOL
4	SLEEVE
5	SEAT
7	POPPET
8	BUSHING
9	NAME PLATE
10	SPRING
11	SPRING
12	SCREW
13	PLUG
14	PLUG
15	KNOB UNIT
16	PLATE
17	RIVET
18	PLUG
19	BACK-UP RING
20	O-RING
21	O-RING
22	O-RING
23	O-RING
24	O-RING

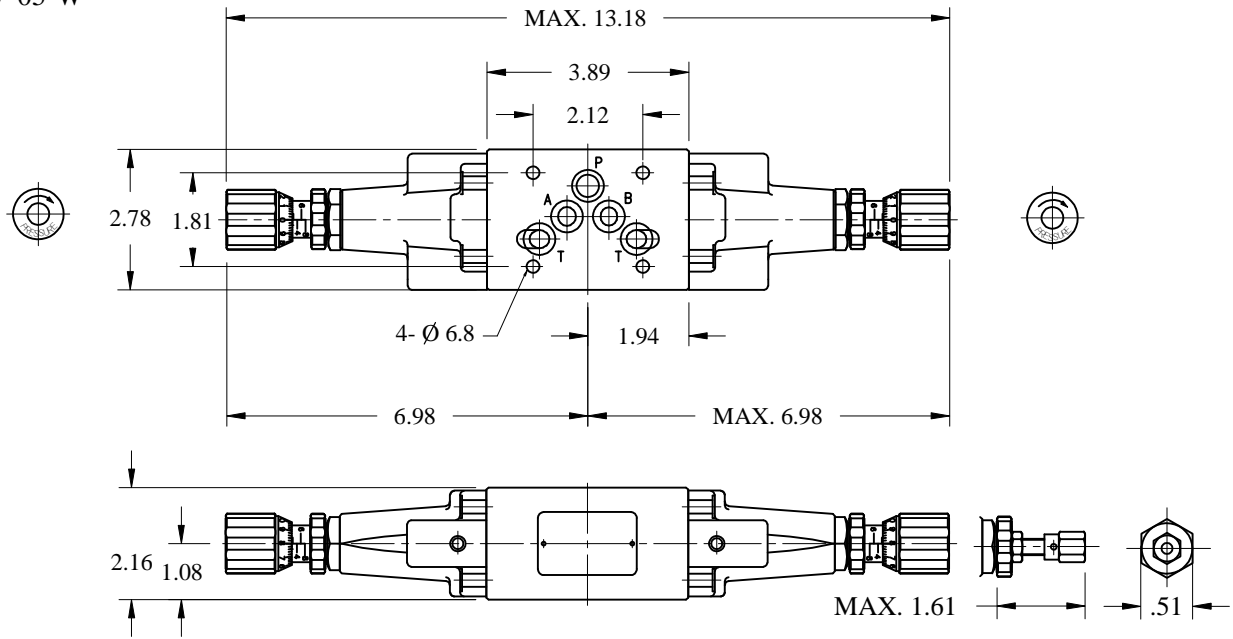
NO.	PARTS NAME	PARTS NO.	Q'TY			
			P	W	A	B
20	O-RING	P10A, 70°	1	2	1	1
21	O-RING	P7, 70°	1	2	1	1
22	O-RING	P26, 90°	1	2	1	1
23	O-RING	P18, 70°	1	2	1	1
24	O-RING	AS568-014	5	5	5	5

IFP MRV05 RELIEF VALVE MODULE



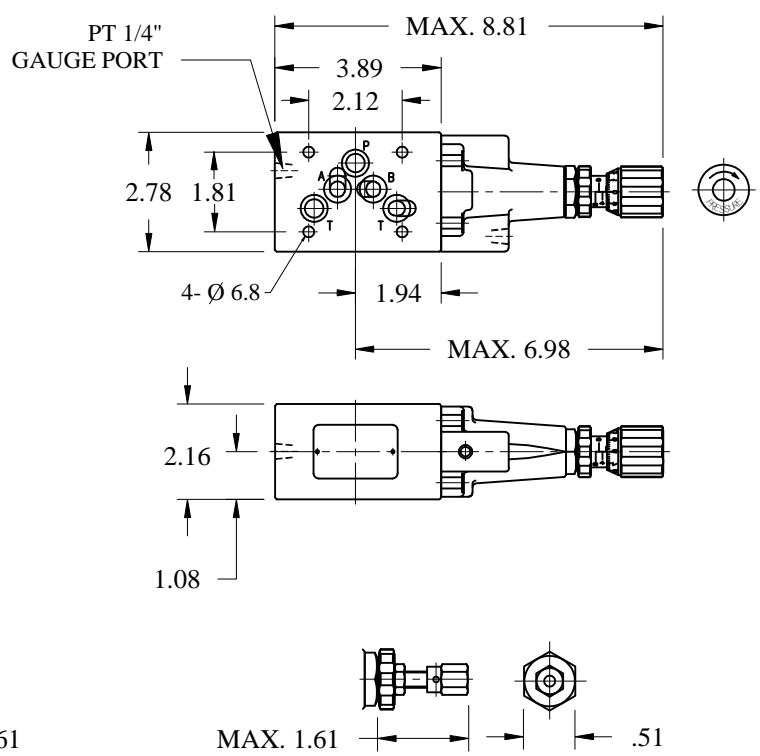
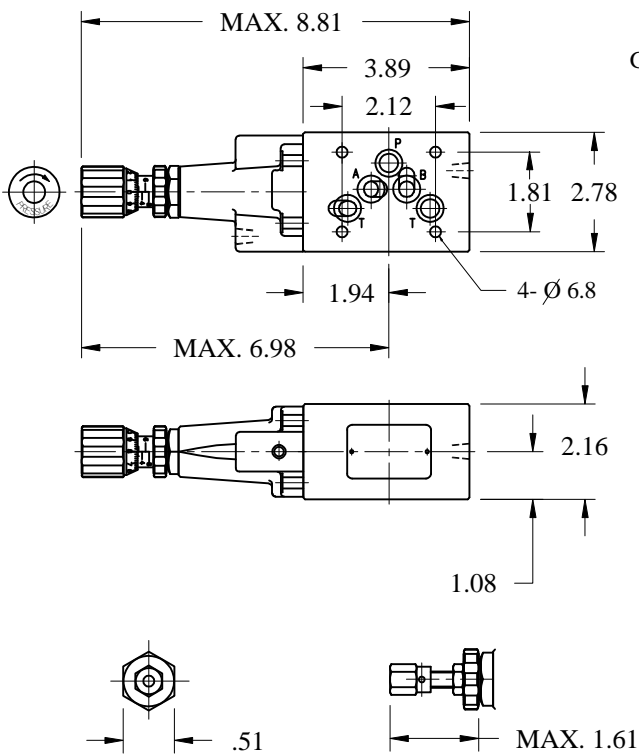
DIMENSIONS

MRV-05-W-*



MRV-05-P-
(A)

MRV-05-B-*



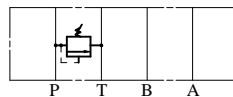
IFP MRV07 RELIEF VALVE MODULE



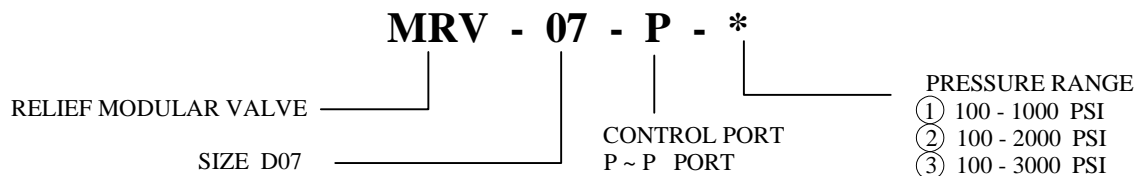
- ISO4401-07 SIZE/NFPA D07
- MICROMETER KNOB ADJUSTABLE STANDARD
- EXTREMELY PRECISE CONTROL
- TWO STAGE BALANCED PISTON
- FOUR PRESSURE RANGES AVAILABLE
- LOW PRESSURE OVERRIDE



MRV-07-P



ORDERING CODE



SPECIFICATIONS

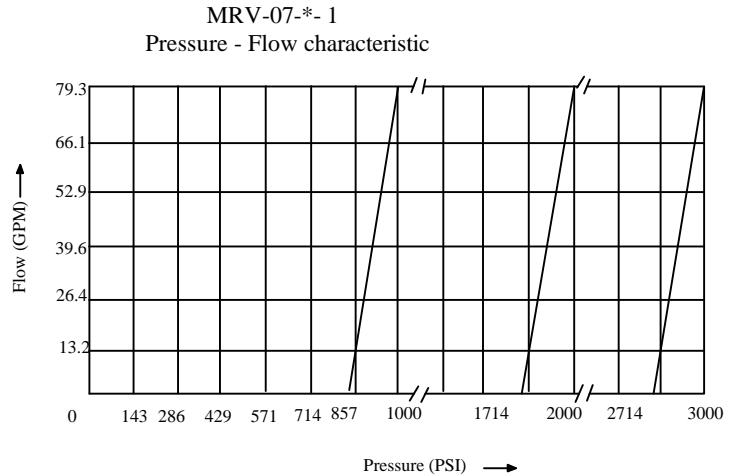
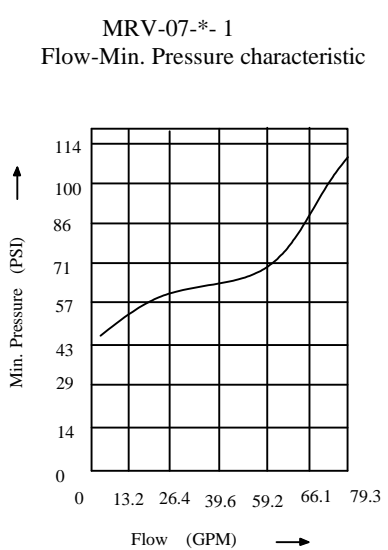
TYPES	SIZE	MAX. PRESSURE (PSI)	RATED FLOW (GPM)	PRESSURE RANGE (PSI)	WEIGHT lbs
MRV-07-P-*	D07	4570 PSI	79.3	① 100 - 1000 PSI ② 100 - 2000 PSI ③ 100 - 3000 PSI	15.4

IFP offers a balanced piston modular relief valve, designed for use in applications requiring an adjustable regulating valve to limit the pressure in a hydraulic circuit to a predetermined maximum. The use of stackable modules offers cost effective, compact hydraulic systems in which the modules are "sandwiched" between a directional valve and standard mounting surface.

IFP MRV07 RELIEF VALVE MODULE

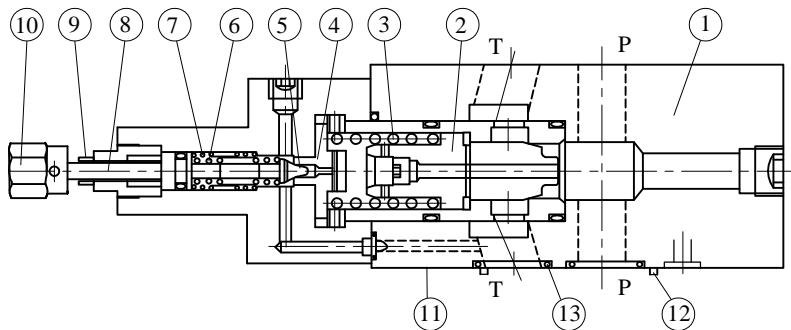


PERFORMANCE CURVES Viscosity (100-150 SUS)



CROSS SECTION DIAGRAM

MRV-07-P-*



NO.	DESCRIPTION
1	BODY
2	BALANCED POPPET
3	BALANCED POPPET SPRING
4	SEAT
5	PILOT VALVE POPPET
6	SPRING
7	SPRING
8	SCREW
9	NUT
10	ADJUSTMENT ELEMENT
11	CONNECTIONS TO DIN 24340 FROM A16
12	LOCATING PIN
13	O-RING
	PORTS A, B, P, T: AS568-118
	PORTS X, Y: AS568-012

IFP MRV07 RELIEF VALVE MODULE



DIMENSIONS

MRV-07-P-*

