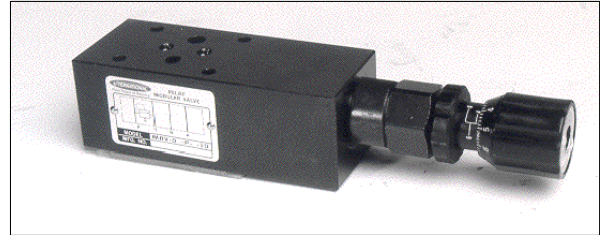


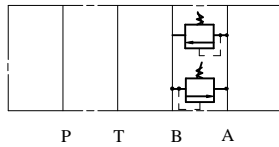
IFP MBV03 BREAK VALVE MODULE



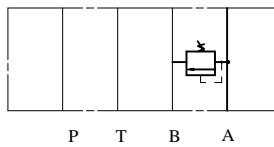
- ISO4401-03 SIZE/NFPA D03
- ADJUSTABLE STANDARD MICROMETER KNOB
- EXTREMELY PRECISE CONTROL
- OPTIONAL PRESSURE RANGES
- LOW PRESSURE OVERRIDE



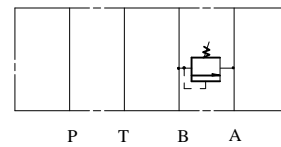
MBV-03-W



MBV-03-A



MBV-03-B



ORDERING CODE

MBV - 03 - W - *

MODULAR BREAK VALVE

SIZE D03

CONTROL PORT
W ~ A,B PORT
A ~ A PORT
B ~ B PORT

PRESSURE RANGE

- ① 10 - 1000 PSI
- ② 500 - 3500 PSI

SPECIFICATIONS

TYPES	SIZE	MAX. PRESSURE (PSI)	RATED FLOW (GPM)	PRESSURE RANGE (PSI)	WEIGHT lbs
MBV-03-W-*	D03	4500 PSI	15	① 10 - 1000 PSI	3.30
MBV-03-A-*				③ 500 - 3500 PSI	3.08
MBV-03-B-*					3.08

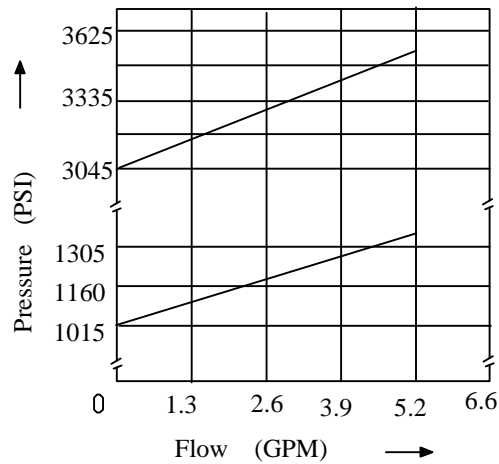
IFP offers a modular Break Valve, designed to protect components against hydraulic and structural damage which can be caused by sudden stopping of inertial loads. They also protect "swing" circuits and other bi-directional installations against surge and cavitation. The use of stackable modules offers cost effective, compact hydraulic systems in which the modules are "sandwiched" between a directional valve and standard mounting surface.

IFP MBV03 BREAK VALVE MODULE



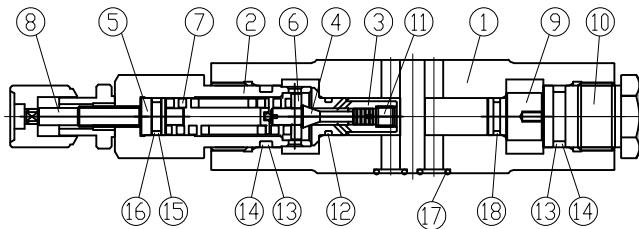
PERFORMANCE CURVES Viscosity (100-150 SUS)

MBV-03-*- 1
Flow - Pressure characteristic



CROSS SECTION DIAGRAM

MRV-03-*-*



NO.	DESCRIPTION
1	BODY
2	RETAINER
3	SEAT
4	POPPET
5	SCREW
6	O-RING
7	SPRING
8	KNOB UNIT
9	PLUG
10	NUT
11	O-RING
12	O-RING
13	O-RING
14	BACK-UP RING
15	O-RING
16	BACK-UP RING
17	O-RING
18	O-RING

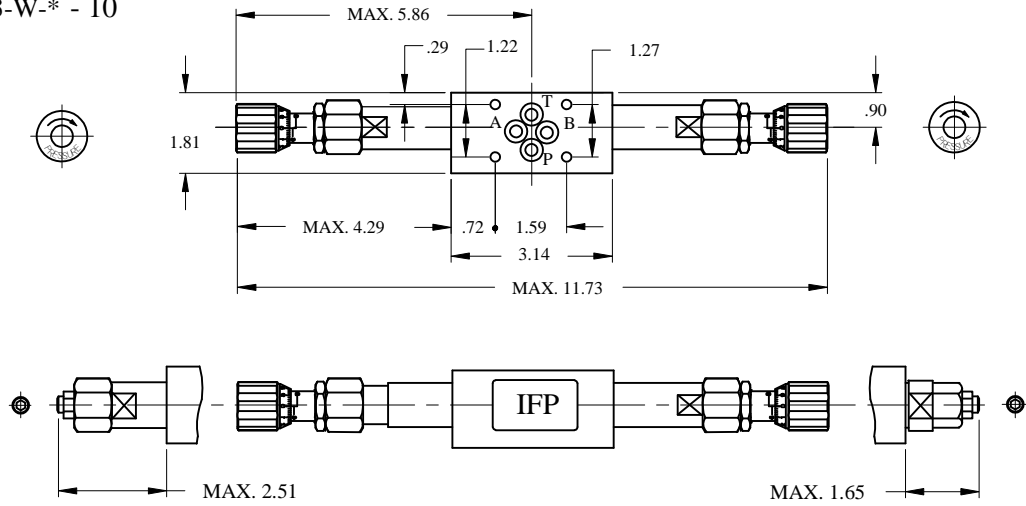
NO.	PARTS NAME	PARTS NO.	Q'TY		
			W	A	B
6	O-RING	P5, 90°	2	1	1
12	O-RING	P7, 90°	2	1	1
13	O-RING	P5, 90°	2	2	2
15	O-RING	P14, 70°	2	1	1
17	O-RING	P7, 90°	4	4	4
18	O-RING	P7, 70°	0	1	1

IFP MBV03 BREAK VALVE MODULE

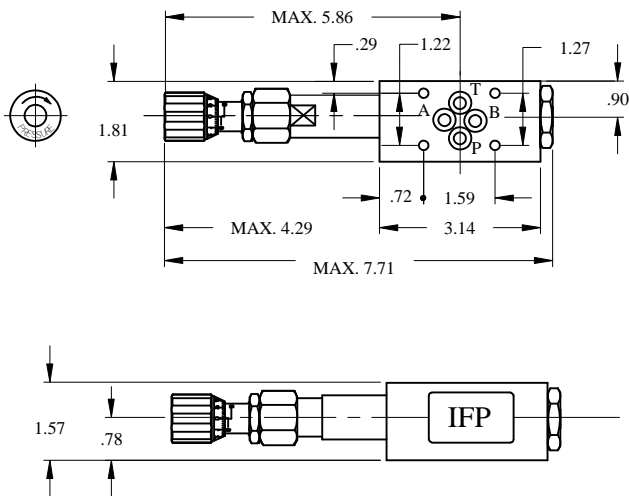


DIMENSIONS

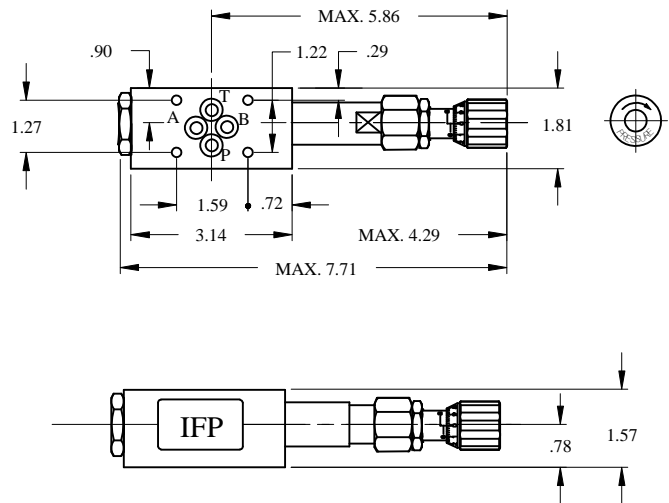
MBV-03-W-* - 10



MBV-03-A-* - 10



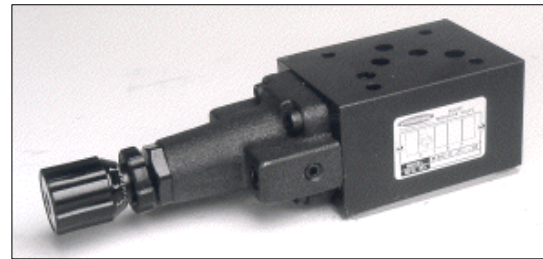
MBV-03-A-* - 10



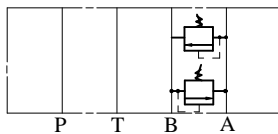
IFP MBV05 BREAK VALVE MODULE



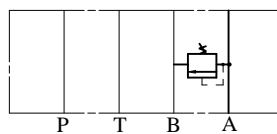
- ISO4401-05 SIZE/NFPA D05
- ADJUSTABLE MICROMETER KNOB STANDARD
- EXTREMELY PRECISE CONTROL
- OPTIONAL PRESSURE RANGES
- LOW PRESSURE OVERRIDE



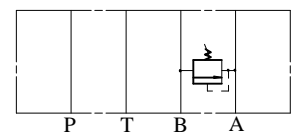
MBV-05-W



MBV-05-A



MBV-05-B



ORDERING CODE

MBV - 05 - W - *

MODULAR BREAK VALVE

SIZE D05

CONTROL PORT
W ~ A,B PORT
A ~ A PORT
B ~ B PORT

PRESSURE RANGE

- ① 10 - 1000 PSI
- ② 500 - 3500 PSI

SPECIFICATIONS

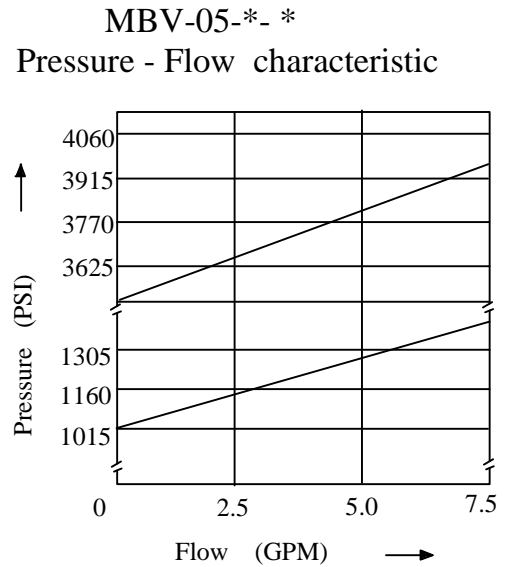
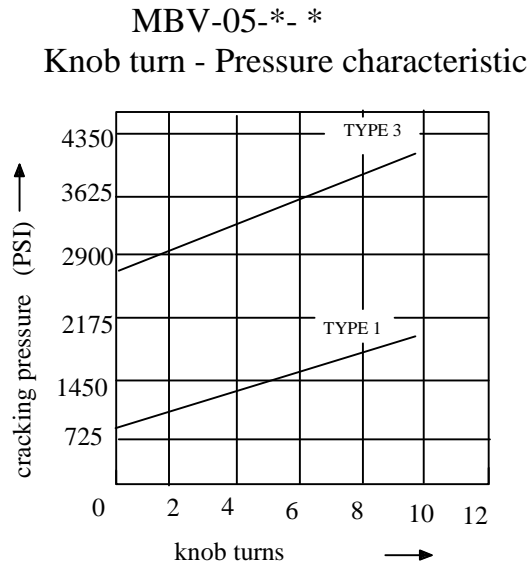
TYPES	SIZE	MAX. PRESSURE (PSI)	RATED FLOW (GPM)	PRESSURE RANGE (PSI)	WEIGHT lbs
MBV-05-W-*	D05	4500 PSI	30	① 10 - 1000 PSI	10.50
MBV-05-A-*				③ 500 - 3500 PSI	8.80
MBV-05-B-*					8.80

IFP offers a modular Break Valve, designed to protect components against hydraulic and structural damage which can be caused by sudden stopping of inertial loads. They also protect "swing" circuits and other bi-directional installations against surge and cavitation. The use of stackable modules offers cost effective, compact hydraulic systems in which the modules are "sandwiched" between a directional valve and standard mounting surface.

IFP MBV05 BREAK VALVE MODULE

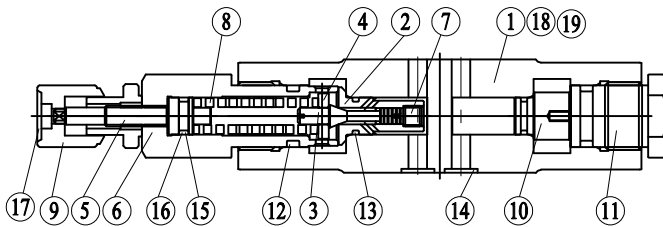


PERFORMANCE CURVES Viscosity (100-150 SUS)



CROSS SECTION DIAGRAM

MBV-05-*-*



NO.	DESCRIPTION
1	BODY
2	SEAT
3	POPPET
4	GUIDE
5	SCREW
6	RETAINER
7	ORIFICE
8	SPRING
9	KNOB UNIT
10	PLUG
11	NUT
12	O-RING
13	O-RING
14	O-RING
15	O-RING
16	BACK-UP RING
17	PLATE
18	NAME PLATE
19	RIVET

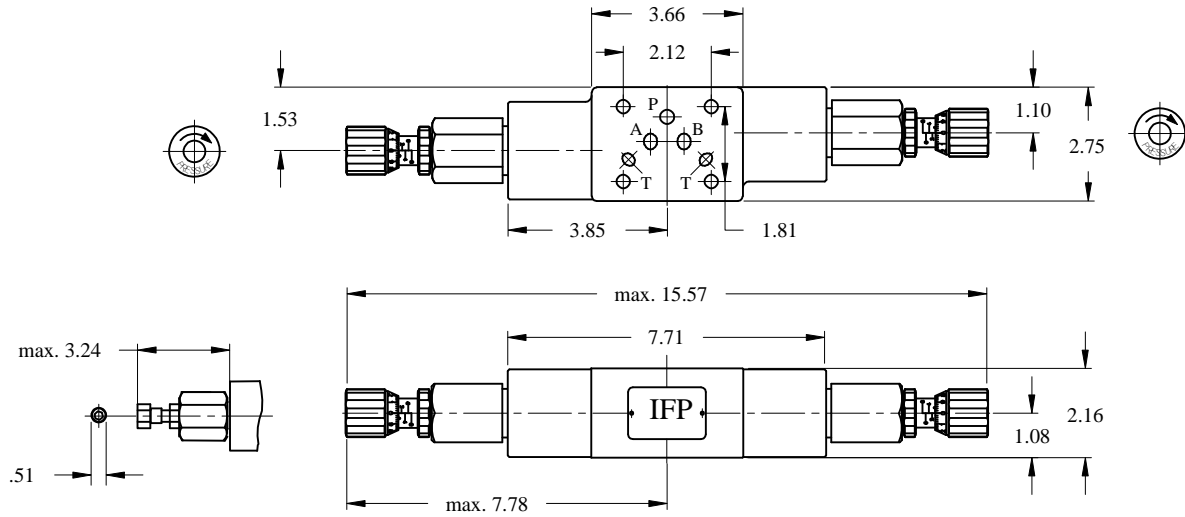
NO.	PARTS NAME	PARTS NO.	Q'TY		
			W	A	B
12	O-RING	P30,90°	2	2	2
13	O-RING	P14,90°	2	2	2
15	O-RING	AS-568-014	5	5	5
15	O-RING	P14,70°	2	1	1

IFP MBV05 BREAK VALVE MODULE



DIMENSIONS

MBV-05-W-* - 10



MBV-05-A-* - 10

MBV-05-B-* - 10

