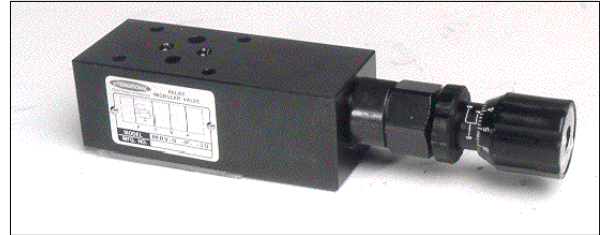


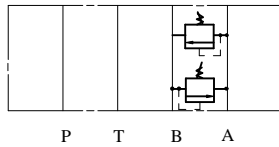
# IFP MBV03 BREAK VALVE MODULE



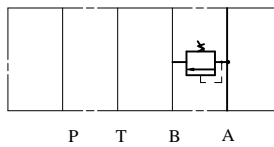
- ISO4401-03 SIZE/NFPA D03
- ADJUSTABLE STANDARD MICROMETER KNOB
- EXTREMELY PRECISE CONTROL
- OPTIONAL PRESSURE RANGES
- LOW PRESSURE OVERRIDE



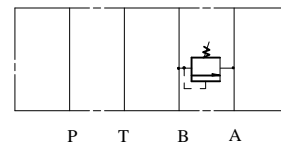
MBV-03-W



MBV-03-A



MBV-03-B



## ORDERING CODE

**MBV - 03 - W - \***

MODULAR BREAK VALVE

SIZE D03

CONTROL PORT  
W ~ A,B PORT  
A ~ A PORT  
B ~ B PORT

PRESSURE RANGE

- ① 10 - 1000 PSI
- ② 500 - 3500 PSI

## SPECIFICATIONS

TYPES	SIZE	MAX. PRESSURE (PSI)	RATED FLOW (GPM)	PRESSURE RANGE (PSI)	WEIGHT lbs
MBV-03-W-*	D03	4500 PSI	15	① 10 - 1000 PSI	3.30
MBV-03-A-*				③ 500 - 3500 PSI	3.08
MBV-03-B-*					3.08

IFP offers a modular Break Valve, designed to protect components against hydraulic and structural damage which can be caused by sudden stopping of inertial loads. They also protect "swing" circuits and other bi-directional installations against surge and cavitation. The use of stackable modules offers cost effective, compact hydraulic systems in which the modules are "sandwiched" between a directional valve and standard mounting surface.