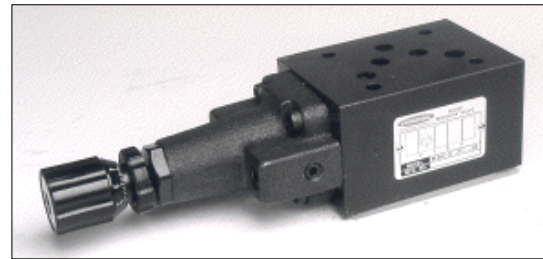


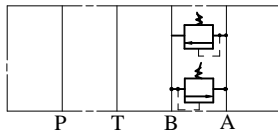
IFP MBV05 BREAK VALVE MODULE



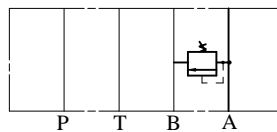
- ISO4401-05 SIZE/NFPA D05
- ADJUSTABLE MICROMETER KNOB STANDARD
- EXTREMELY PRECISE CONTROL
- OPTIONAL PRESSURE RANGES
- LOW PRESSURE OVERRIDE



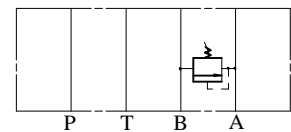
MBV-05-W



MBV-05-A



MBV-05-B



ORDERING CODE

MBV - 05 - W - *

MODULAR BREAK VALVE

SIZE D05

CONTROL PORT
W ~ A,B PORT
A ~ A PORT
B ~ B PORT

PRESSURE RANGE

- ① 10 - 1000 PSI
- ② 500 - 3500 PSI

SPECIFICATIONS

TYPES	SIZE	MAX. PRESSURE (PSI)	RATED FLOW (GPM)	PRESSURE RANGE (PSI)	WEIGHT lbs
MBV-05-W-*	D05	4500 PSI	30	① 10 - 1000 PSI	10.50
MBV-05-A-*				③ 500 - 3500 PSI	8.80
MBV-05-B-*					8.80

IFP offers a modular Break Valve, designed to protect components against hydraulic and structural damage which can be caused by sudden stopping of inertial loads. They also protect "swing" circuits and other bi-directional installations against surge and cavitation. The use of stackable modules offers cost effective, compact hydraulic systems in which the modules are "sandwiched" between a directional valve and standard mounting surface.