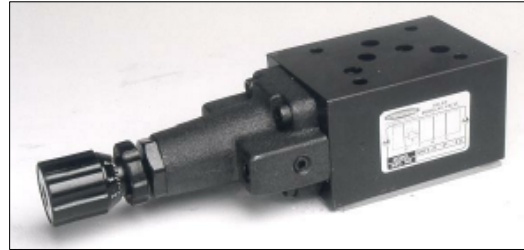


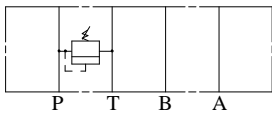
IFP MRV05 RELIEF VALVE MODULE



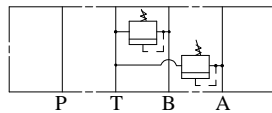
- ISO4401-05 SIZE/NFPA D05
- ADJUSTABLE STANDARD MICROMETER KNOB
- EXTREMELY PRECISE CONTROL
- TWO STAGE BALANCE PISTON
- FOUR PRESSURE RANGES AVAILABLE
- LOW PRESSURE OVERRIDE



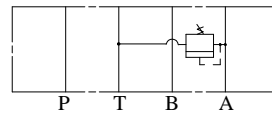
MRV-05-P



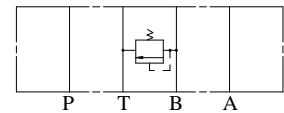
MRV-05-W



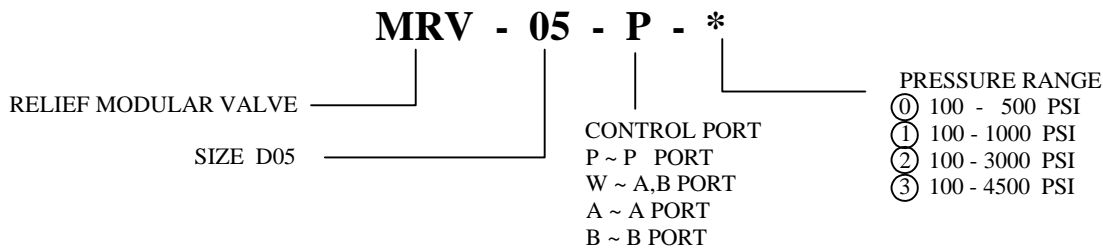
MRV-05-A



MRV-05-B



ORDERING CODE



SPECIFICATIONS

TYPES	SIZE	MAX. PRESSURE (PSI)	RATED FLOW (GPM)	PRESSURE RANGE (PSI)	WEIGHT lbs
MRV-05-P-*	D05	4500 PSI	30	① 100 - 500 PSI	6.83
MRV-05-W-*				① 100 - 1000 PSI	8.60
MRV-05-A-*				② 100 - 3000 PSI	6.83
MRV-05-B-*				③ 100 - 4500 PSI	6.83

IFP offer a balanced piston modular relief valve, designed for use in applications requiring an adjustable regulating valve to limit the pressure in a hydraulic circuit to a predetermined maximum. The use of stackable modules offers cost effective, compact hydraulic systems in which the modules are "sandwiched" between a directional valve and standard mounting surface.