

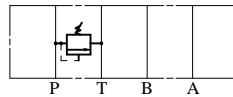
IFP MRV07 RELIEF VALVE MODULE



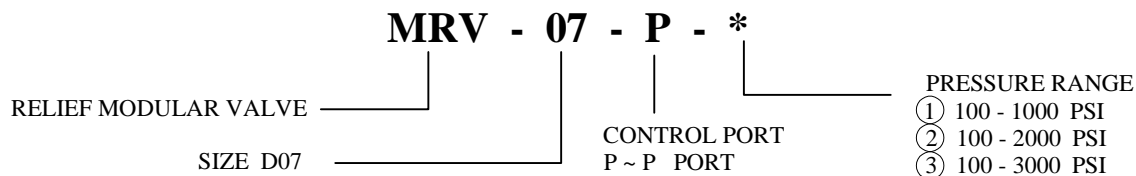
- ISO4401-07 SIZE/NFPA D07
- MICROMETER KNOB ADJUSTABLE STANDARD
- EXTREMELY PRECISE CONTROL
- TWO STAGE BALANCED PISTON
- FOUR PRESSURE RANGES AVAILABLE
- LOW PRESSURE OVERRIDE



MRV-07-P



ORDERING CODE



SPECIFICATIONS

TYPES	SIZE	MAX. PRESSURE (PSI)	RATED FLOW (GPM)	PRESSURE RANGE (PSI)	WEIGHT lbs
MRV-07-P-*	D07	4570 PSI	79.3	① 100 - 1000 PSI ② 100 - 2000 PSI ③ 100 - 3000 PSI	15.4

IFP offers a balanced piston modular relief valve, designed for use in applications requiring an adjustable regulating valve to limit the pressure in a hydraulic circuit to a predetermined maximum. The use of stackable modules offers cost effective, compact hydraulic systems in which the modules are "sandwiched" between a directional valve and standard mounting surface.