

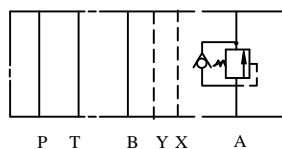
# IFP MCB07 COUNTER BALANCE MODULE



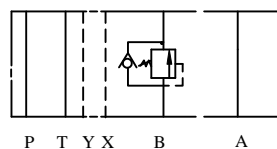
- ISO4401-07 SIZE/NFPA D07
- EASY ADJUSTABLE KNOB
- EXTREMELY PRECISE CONTROL
- LOW PRESSURE OVERRIDE



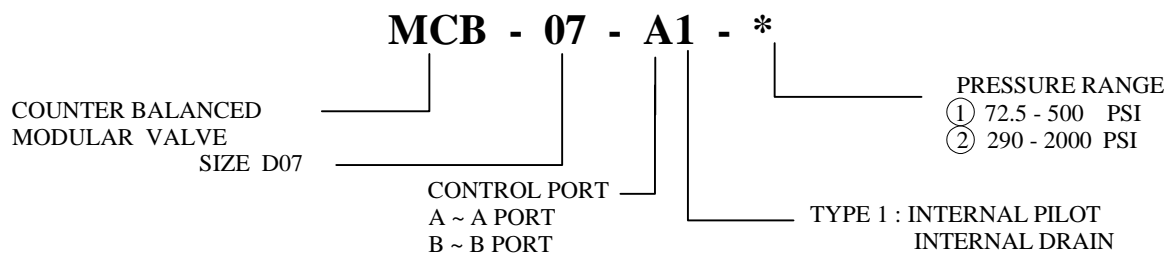
MCB-07-A



MCB-07-B



## ORDERING CODE



## SPECIFICATIONS

TYPES	SIZE	MAX. PRESSURE (PSI)	RATED FLOW (GPM)	PRESSURE RANGE (PSI)	WEIGHT lbs
MCB-07-A1-*	D07	4570 PSI	79.3	① 72.5 - 500 PSI	17.70
MCB-07-B1-*				② 290 - 2030 PSI	

IFP offer a modular Counter Balanced Valve designed for use in applications requiring a valve to restrain flow and prevent cavitation by keeping the load from running ahead of the pump. They also serve as safety devices in case of line breakage, provide thermal relief protection in blocked systems, and can function as a deceleration valve. The use of stackable modules offers cost effective, compact hydraulic systems in which the modules are "sandwiched" between a directional valve and standard mounting surface.