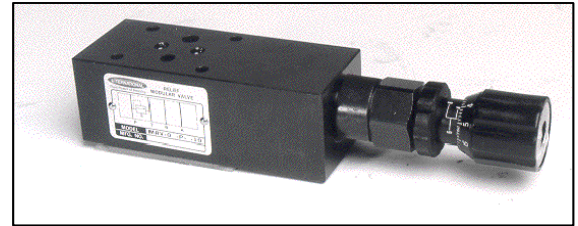


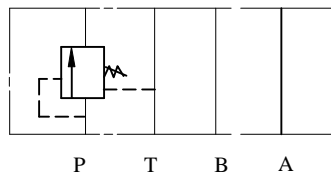
IFP MSV03 SEQUENCE VALVE MODULE



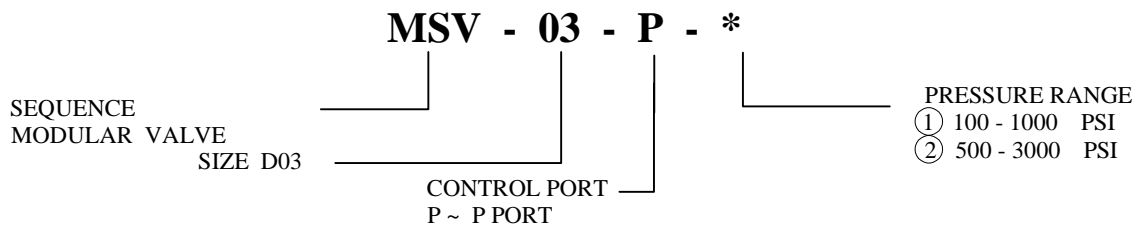
- ISO4401-03 SIZE/NFPA D03
- ADJUSTABLE MICROMETER KNOB
- EXTREMELY PRECISE CONTROL
- OPTIONAL PRESSURE RANGES AVAILABLE
- LOW PRESSURE OVERRIDE



MSV-03-P



ORDERING CODE



SPECIFICATIONS

TYPES	SIZE	MAX. PRESSURE (PSI)	RATED FLOW (GPM)	PRESSURE RANGE (PSI)	WEIGHT lbs
MSV-03-P-*	D03	4500 PSI	15	① 100 - 1000 PSI	2.40
				② 500 - 3000 PSI	

IFP offers a modular Sequence Valve designed for use in applications requiring an adjustable regulating valve to control operational sequence of two or more hydraulic actuators and to assure priority hydraulic pressure to one part of a circuit before another. The use of stackable modules offers cost effective, compact hydraulic systems in which the modules are "sandwiched" between a directional valve and standard mounting surface.

IFP MSV03 SEQUENCE VALVE MODULE

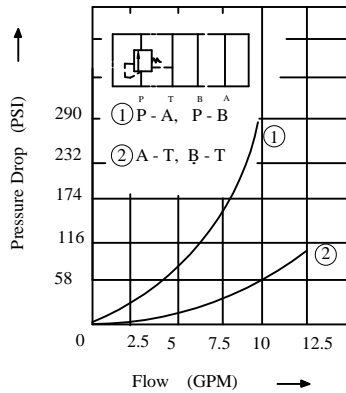


PERFORMANCE CURVES Viscosity (100-150 SUS)

MSV-03-P2- *

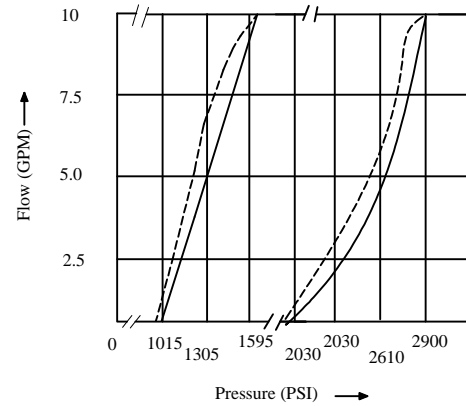
MSV-03-P2- *

Pressure Drop characteristic



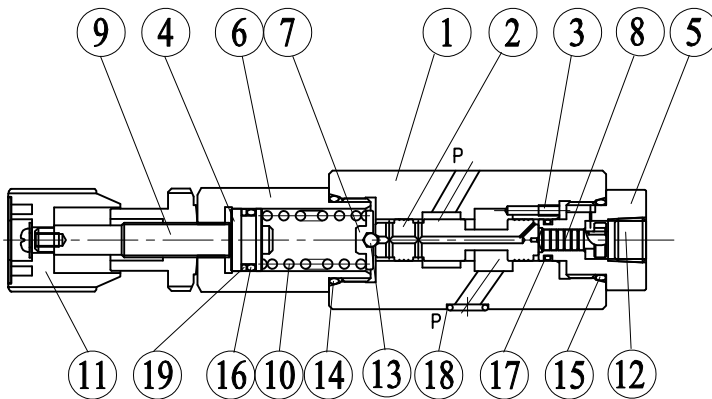
Pressure - Flow characteristic

————— PRESSURE INCREASE
----- PRESSURE DECREASE



CROSS SECTION DIAGRAM

MSV-03-P-2 - *



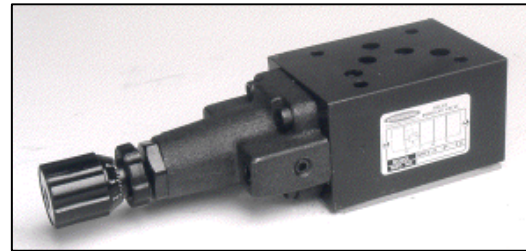
NO.	DESCRIPTION
1	BODY
2	SPOOL
3	CHOCK
4	PLUNGER
5	BUSHING
6	RETAINER
7	GUIDE
8	PISTON
9	SCREW
10	SPRING
11	AJUSTMENT ELEMENT
12	PLUG
13	BALL
14	O-RING
15	O-RING
16	O-RING
17	O-RING
18	O-RING
19	B/U-RING

NO.	DESCRIPTION	PART NO.	Q'TY
14	O-RING	P22, 90°	1
15	O-RING	P20, 90°	1
16	O-RING	P14, 70°	1
17	O-RING	P9, 90°	1
18	O-RING	P9, 90°	4

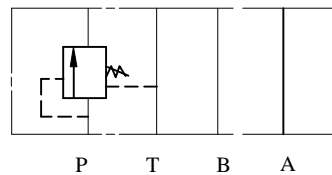
IFP MSV05 SEQUENCE VALVE MODULE



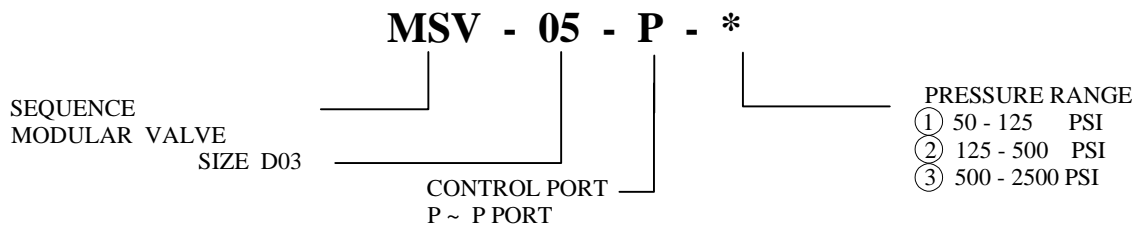
- ISO4401-05 SIZE/NFPA D05
- ADJUSTABLE MICROMETER KNOB
- EXTREMELY PRECISE CONTROL
- OPTIONAL PRESSURE RANGES AVAILABLE
- LOW PRESSURE OVERRIDE



MSV-05-P



ORDERING CODE



SPECIFICATIONS

TYPES	SIZE	MAX. PRESSURE (PSI)	RATED FLOW (GPM)	PRESSURE RANGE (PSI)	WEIGHT lbs
MSV-05-P-*	D05	4500 PSI	30	① 50 - 125 PSI	7.70
				② 125 - 500 PSI	
				③ 500 - 2500 PSI	

IFP offers a modular Sequence Valve designed for use in applications requiring an adjustable regulating valve to control operational sequence of two or more hydraulic actuators and to assure priority hydraulic pressure to one part of a circuit before another. The use of stackable modules offers cost effective, compact hydraulic systems in which the modules are "sandwiched" between a directional valve and standard mounting surface.

IFP MSV05 SEQUENCE VALVE MODULE

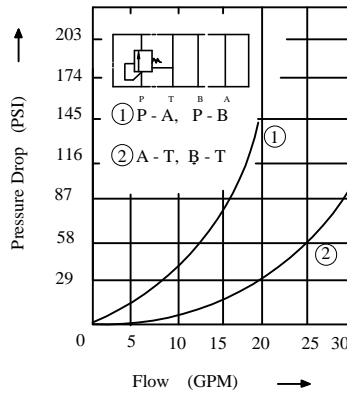


MSV-05-P- *

PERFORMANCE CURVES Viscosity (100-150 SUS)

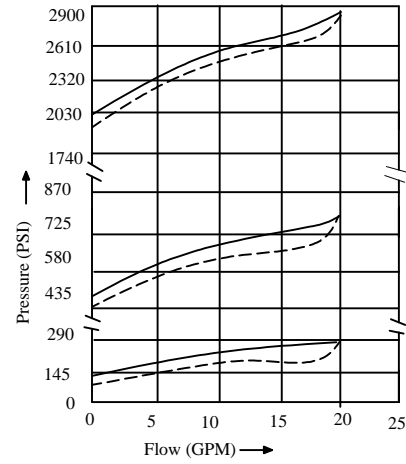
MSV-05-P- 1

Pressure Drop characteristic



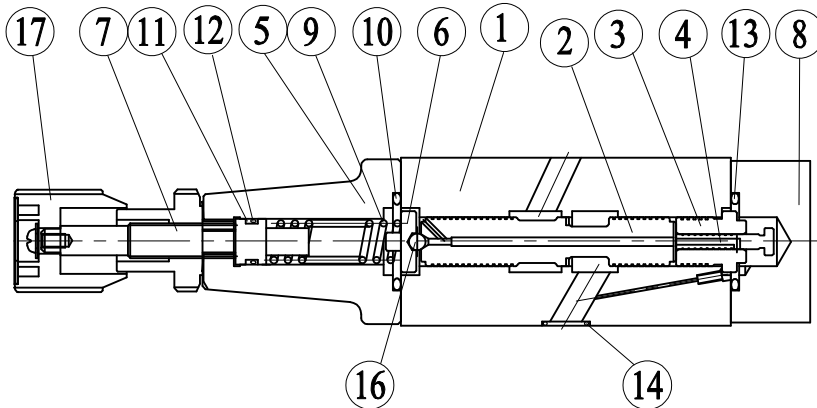
Pressure - Flow characteristic

————— PRESSURE INCREASE
----- PRESSURE DECREASE



CROSS SECTION DIAGRAM

MSV-05-P-*



NO. DESCRIPTION

1	BODY
2	SPOOL
3	SLEEVE
4	PISTON
5	COVER
6	GUIDE
7	SCREW
8	COVER
9	SPRING
10	SPRING
11	BACK-UP RING
12	O-RING
13	O-RING
14	O-RING
16	BALL
17	AJUSTMENT ELEMENT

NO.	DESCRIPTION	PART NO.	Q'TY
12	O-RING	P8, 70°	1
13	O-RING	P26, 90°	2
14	O-RING	AS-568-014	5

IFP MSV05 SEQUENCE VALVE MODULE



DIMENSIONS

MSV-05-P-*

