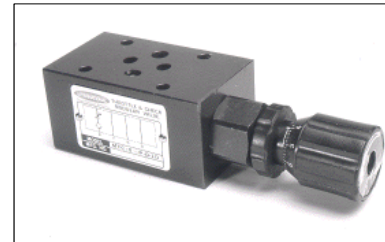


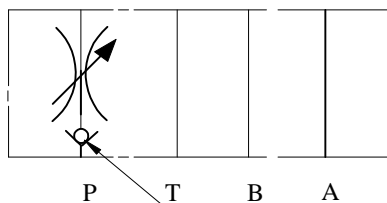
IFP MTV03 FLOW REGULATOR MODULE



- ISO4401-03 SIZE/NFPA D03
- ADJUSTABLE MICROMETER KNOB
- EXTREMELY PRECISE CONTROL
- LEAK FREE POSITIVE SEAT

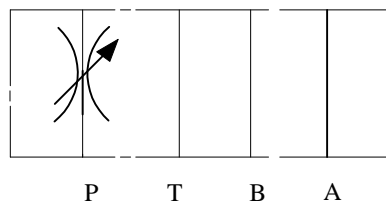


MTC-03-P

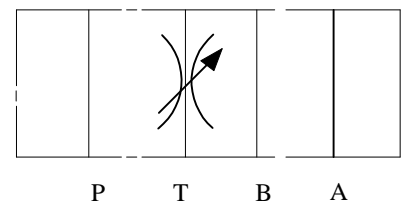


OPTIONAL CHECK VALVE →

MTV-03-P



MTV-03-T



ORDERING CODE

MTV - (MTC) - 03 - P

MODULAR REGULATOR VALVE

MODULAR REGULATOR VALVE (OPTIONAL CHECK VALVE)

SIZE D03

CONTROL PORT
P - PRESSURE
T - TANK

SPECIFICATIONS

TYPES	SIZE	Max. Pressure (PSI)	RATED FLOW (GPM)	WEIGHT lbs
MTC-03-P	D03	4500 PSI	15	2.18
MTV-03-P				
MTV-03-T				

IFP offers a modular Flow Regulator Valve designed for use in applications requiring extremely fine adjustment, especially at low flows. These valves regulate flow by means of an adjustable orifice and flow through the valve is dependent upon pressure drop at any particular setting of the orifice. An optional "P" port check valve is available for a compact flow control and check valve combination. The use of stackable modules offers cost effective, compact hydraulic systems in which the modules are "sandwiched" between a directional valve and standard mounting surface.