

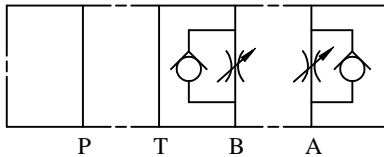
# IFP MTC03 FLOW REGULATOR MODULE/ CHECK VALVE



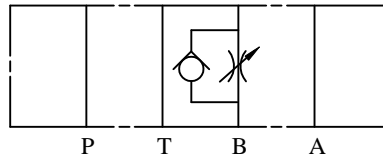
- ISO4401-03 SIZE/NFPA D03
- ADJUSTABLE MICROMETER KNOB
- EXTREMELY PRECISE CONTROL
- LEAK FREE POSITIVE SEAT



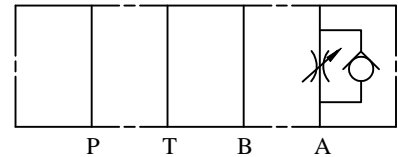
MTC-03- W - 0



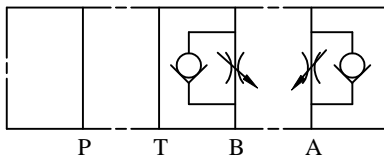
MTC-03-B - 0



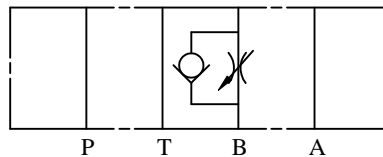
MTC-03-A - 0



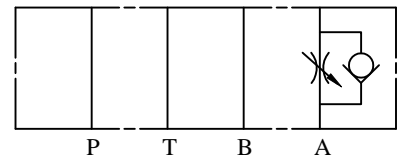
MTC-03-W - I



MTC-03-B - I



MTC-03-A - I



## ORDERING CODE

**MTC - 03 - W - \***

MODULAR REGULAR  
VALVE

SIZE D03

O - METER OUT  
I - METER IN  
  
CONTROL PORT W ~ A&B  
A ~ A  
B ~ B

## SPECIFICATIONS

TYPES	SIZE	MAX. PRESSURE (PSI)	RATED FLOW (GPM)	WEIGHT lbs
MTC-03-W-*	D03	4500 PSI	15	2.87
MTC-03-A (B) - *				2.64

IFP offers a Flow Regulator with Check assemblies in a modular design for applications requiring extremely fine adjustment, especially at low flows. These valves regulate flow by means of an adjustable orifice and flow through the valve is dependent upon pressure drop at any particular setting of the orifice. The internal check valve around each control orifice provide for meter in or meter out control with dual or single service line versions. The use of stackable modules offers cost effective, compact hydraulic systems in which the modules are "sandwiched" between a directional valve and standard mounting surface.