

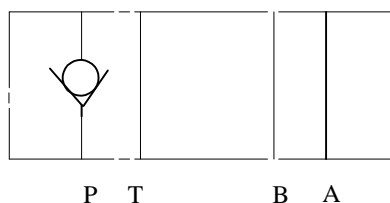
IFP MCV03 CHECK VALVE MODULE



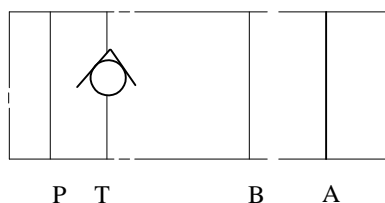
- ISO4401-03 SIZE/NFPA D03
- STEEL SEAT FOR LONG WEAR
- ZERO LEAKAGE



MCV-03-P



MCV-03-T



MCV-03-A



ORDERING CODE

MCV - 03 - P - *

MODULAR CHECK
VALVE

SIZE D03

SPRING

CONTROL PORT
P ~ P PORT
A ~ A PORT
B ~ B PORT
T ~ T PORT

SPECIFICATIONS

TYPES	SIZE	MAX. PRESSURE (PSI)	RATED FLOW (GPM)	PRESSURE RANGE (PSI)	WEIGHT lbs
MCV-03-*1-*	D03	3500 PSI	15	5	2
MCV-03-*2-*				30	
MCV-03-*3-*				65	

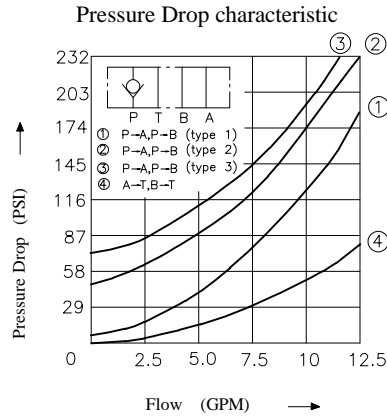
IFP offers a modular Check Valve designed for use in applications requiring free flow in only one direction. They can be used effectively in hydraulic circuits for such functions as isolating a portion of the circuit by blocking flow in one direction, providing an unrestricted path around a restricted control or positively holding a pressurized load. The use of modular design make compact hydraulic systems in which the modules are "sandwiched" between a directional valve and standard mounting surface.

IFP MCV03 CHECK VALVE MODULE



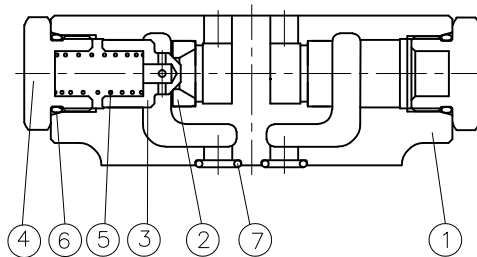
PERFORMANCE CURVES Viscosity (100-150 SUS)

MCV-03-P*



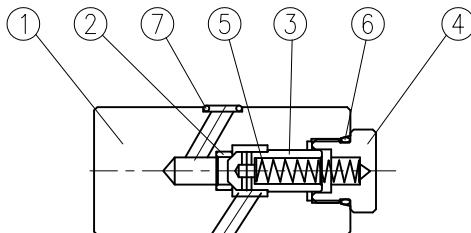
CROSS SECTION DIAGRAM

MCV-03-A-*



NO.	DESCRIPTION
1	Body
2	Seat
3	Poppet
4	Nut
5	Spring
6	O-ring
7	O-ring

MCV-03-P*



NO.	DESCRIPTION
1	Body
2	Seat
3	Poppet
4	Nut
5	Spring
6	O-ring
7	O-ring

NO.	PARTS NAME	PARTS NO.	Q'TY
6	O-RING	P18, 90°	1
7	O-RING	P9, 90°	4

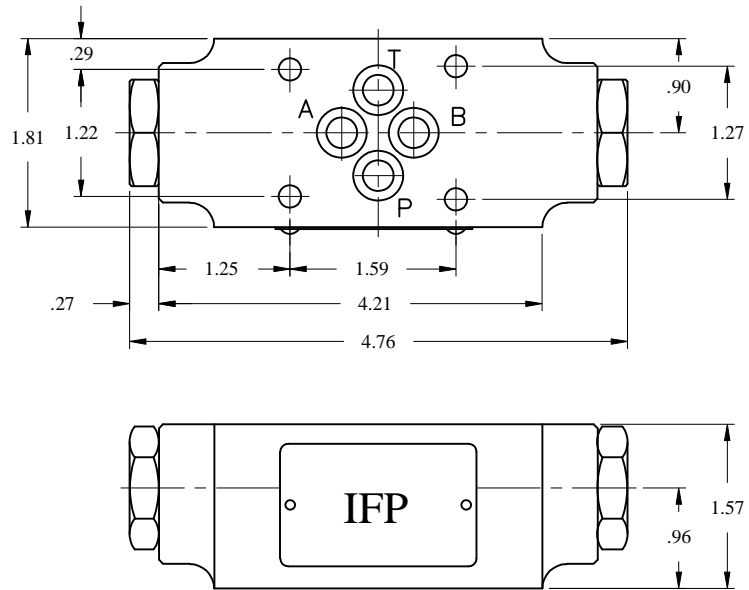
IFP MCV03 CHECK VALVE MODULE



DIMENSIONS

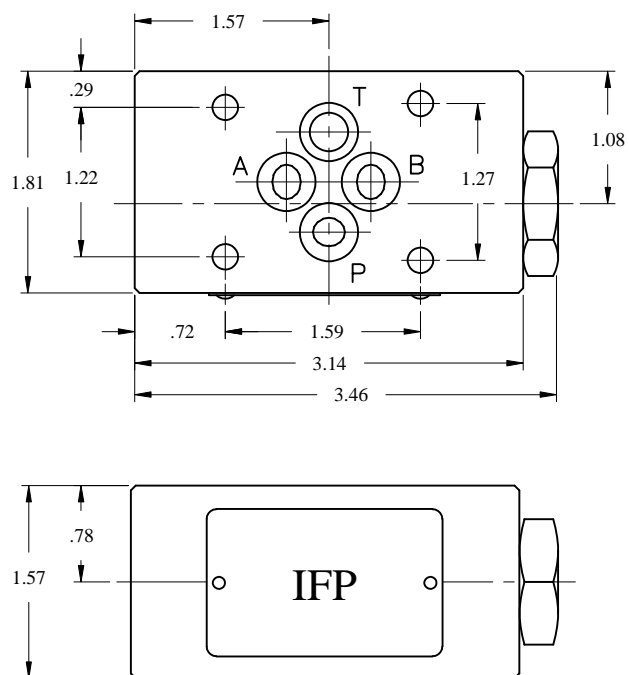
MCV-03-A-*

MCV-03-B-*



MCV-03-P - *

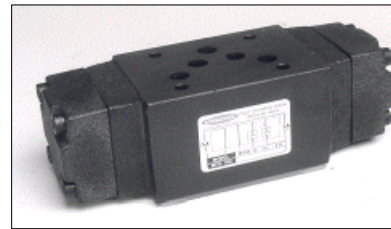
(T)



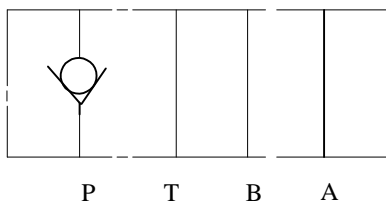
IFP MCV05 CHECK VALVE MODULE



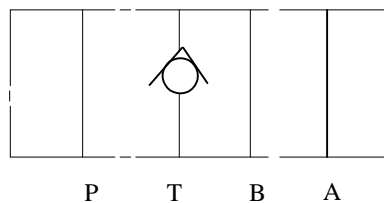
- ISO4401-05 SIZE/NFPA D05
- STEEL SEAT FOR LONG WEAR
- ZERO LEAKAGE



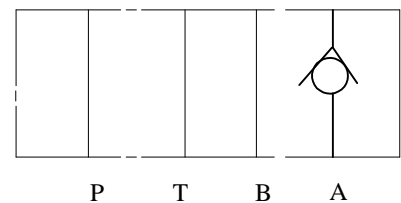
MCV-05-P



MCV-05-T



MCV-05-A



ORDERING CODE

MCV - 05 - P - *

MODULAR CHECK
VALVE

SIZE D05

SPRING

CONTROL PORT
P ~ P PORT
A ~ A PORT
B ~ B PORT
T ~ T PORT

SPECIFICATIONS

TYPES	SIZE	MAX. PRESSURE (PSI)	RATED FLOW (GPM)	PRESSURE RANGE (PSI)	WEIGHT lbs
MCV-05-*1-*	D05	4500 PSI	30	5	6
MCV-05-*2-*				30	
MCV-05-*3-*				65	

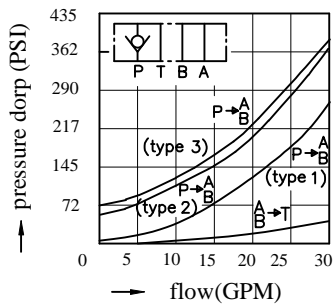
IFP offers a modular Check Valve designed for use in applications requiring free flow in only one direction. They can be used effectively in hydraulic circuits for such functions as isolating a portion of the circuit by blocking flow in one direction, providing an unrestricted path around a restricted control or positively holding a pressurized load. The use of modular design make compact hydraulic systems in which the modules are "sandwiched" between a directional valve and standard mounting surface.

IFP MCV05 CHECK VALVE MODULE

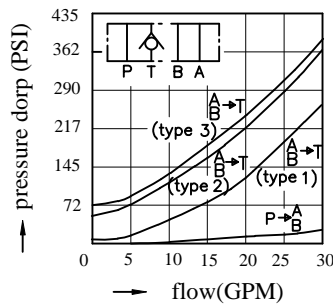


PERFORMANCE CURVES Viscosity (100-150 SUS)

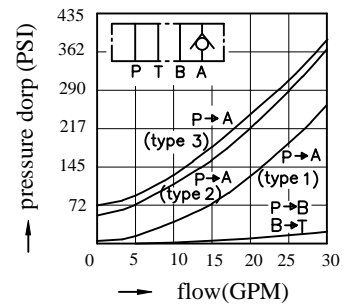
MCV-05-P-*-10



MCV-05-T-*

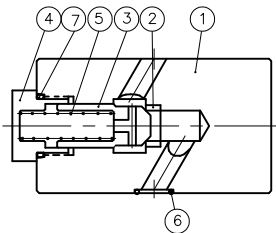


MCV-05-A-*



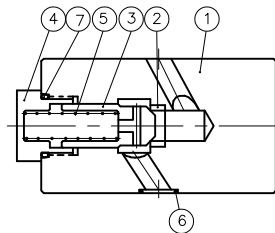
CROSS SECTION DIAGRAM

MCV-05-P-*



NO.	DESCRIPTION	PART NO.	QTY
6	O-ring	AS-568-014	5
7	O-ring	P22	1

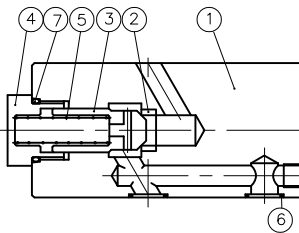
MCV-05-A-*



NO.	DESCRIPTION
1	Body
2	Seat
3	Poppet
4	Nut
5	Spring
6	O-ring
7	O-ring

NO.	DESCRIPTION	PART NO.	QTY
6	O-ring	AS-568-014	5
7	O-ring	P22	1

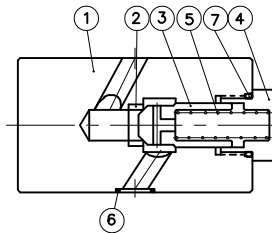
MCV-05-T-*



NO.	DESCRIPTION	PART NO.	QTY
6	O-ring	AS-568-014	5
7	O-ring	P22	1

NO.	DESCRIPTION
1	Body
2	Seat
3	Poppet
4	Nut
5	Spring
6	O-ring
7	O-ring

MCV-05-B-*



NO.	DESCRIPTION	PART NO.	QTY
6	O-ring	AS-568-014	5
7	O-ring	P22	1

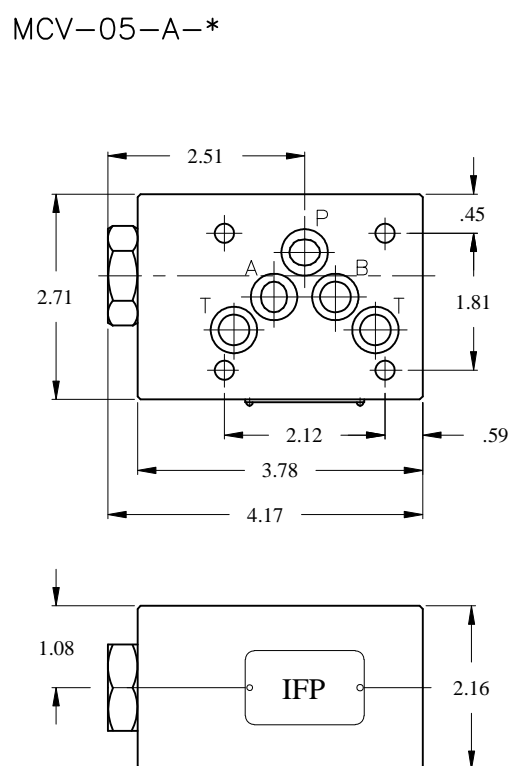
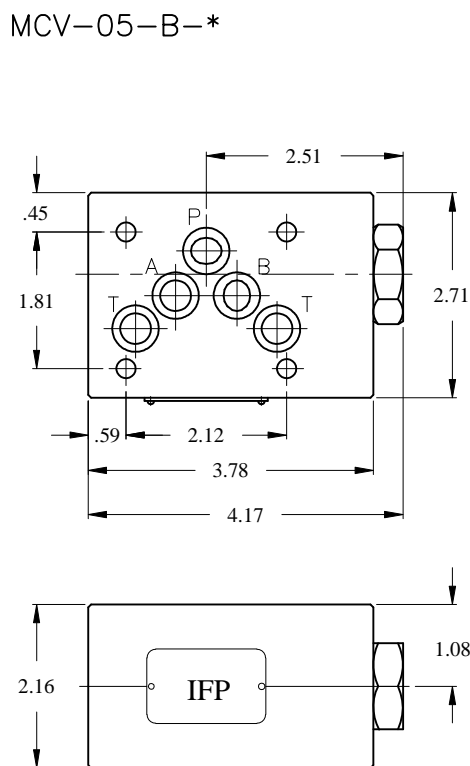
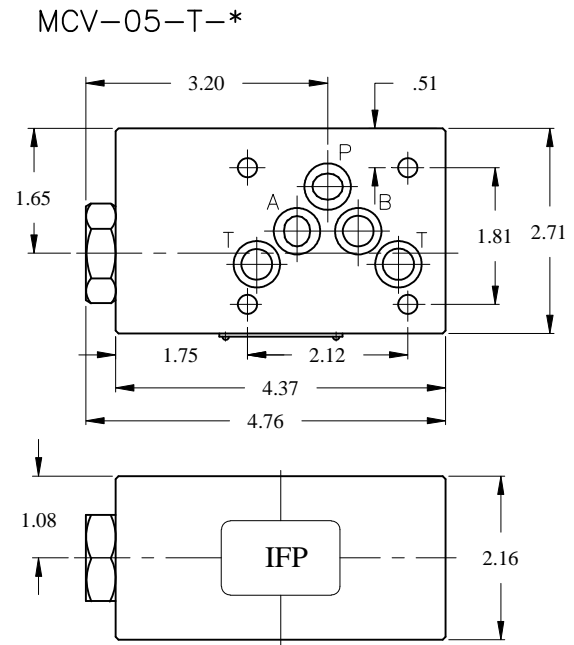
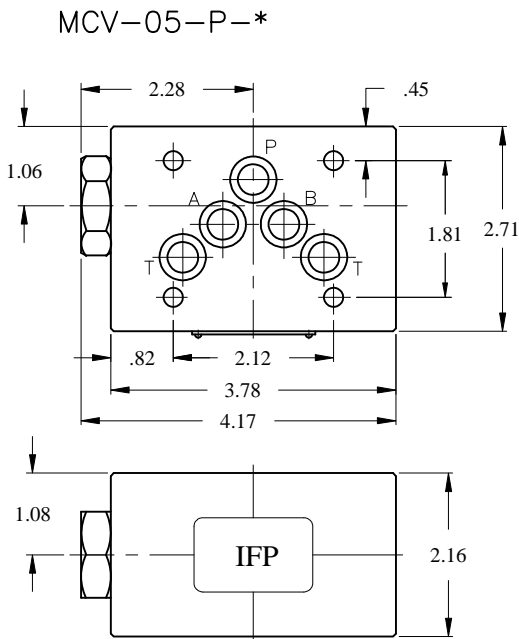
NO.	DESCRIPTION
1	Body
2	Seat
3	Poppet
4	Nut
5	Spring
6	O-ring
7	O-ring

NO.	DESCRIPTION
1	Body
2	Seat
3	Poppet
4	Nut
5	Spring
6	O-ring
7	O-ring

IFP MCV05 CHECK VALVE MODULE



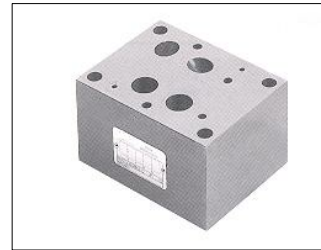
DIMENSIONS



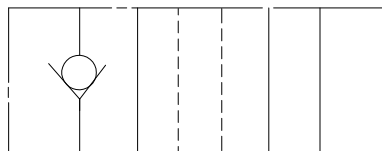
IFP MCV07 CHECK VALVE MODULE



- ISO4401-07 SIZE/NFPA D07
- STEEL SEAT FOR LONG WEAR
- ZERO LEAKAGE

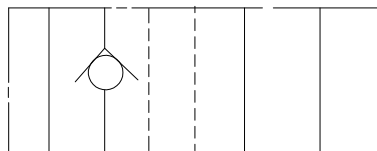


MCV-07-P



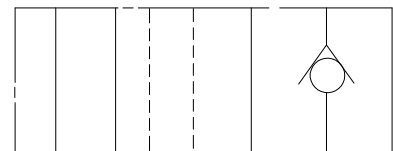
P T Y X B A

MCV-07-T



P T Y X B A

MCV-07-A



P T Y X B A

ORDERING CODE

MCV - 07 - P - *

MODULAR CHECK
VALVE

SIZE D07

SPRING

CONTROL PORT
P ~ P PORT
A ~ A PORT
B ~ B PORT
T ~ T PORT

SPECIFICATIONS

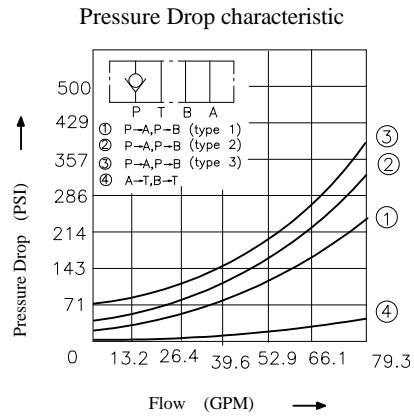
TYPES	SIZE	MAX. PRESSURE (PSI)	RATED FLOW (GPM)	PRESSURE RANGE (PSI)	WEIGHT lbs
MCV-07-*1-*	D07	4570 PSI	26.5	5.7	9.9
MCV-07-*2-*				50	
MCV-07-*3-*				71	

IFP offers a modular Check Valve designed for use in applications requiring free flow in only one direction. They can be used effectively in hydraulic circuits for such functions as isolating a portion of the circuit by blocking flow in one direction, providing an unrestricted path around a restricted control or positively holding a pressurized load. The use of modular design make compact hydraulic systems in which the modules are "sandwiched" between a directional valve and standard mounting surface.

IFP MCV07 CHECK VALVE MODULE

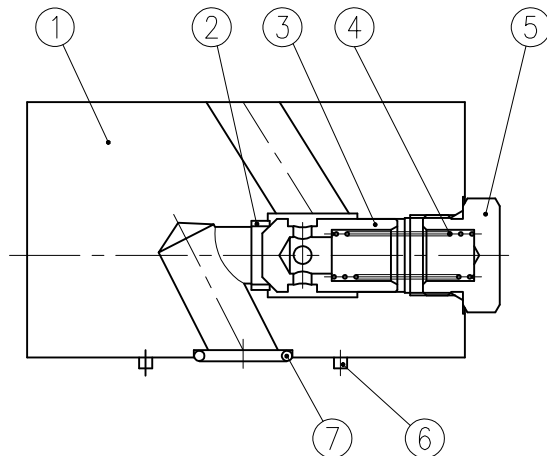


PERFORMANCE CURVES Viscosity (100-150 SUS)



CROSS SECTION DIAGRAM

MCV-07-*-*



NO.	DESCRIPTION
1	Body
2	Seat
3	Poppet
4	Spring
5	Nut
6	Pin
7	O-ring
	PORTS A,B,P,T: AS568-118
	PORTS X, Y: AS568-012

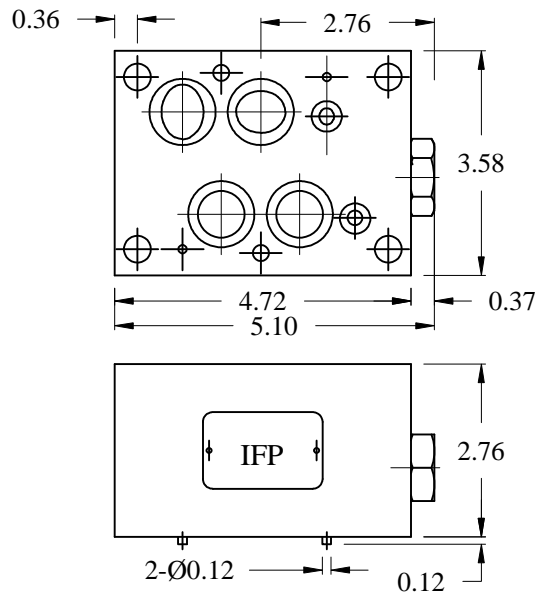
IFP MCV07 CHECK VALVE MODULE



DIMENSIONS

MCV-07-A-*

MCV-07-P-*



MCV-07-T - *

