

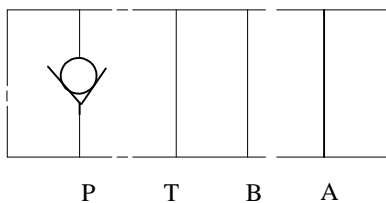
IFP MCV05 CHECK VALVE MODULE



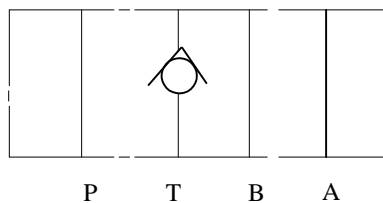
- ISO4401-05 SIZE/NFPA D05
- STEEL SEAT FOR LONG WEAR
- ZERO LEAKAGE



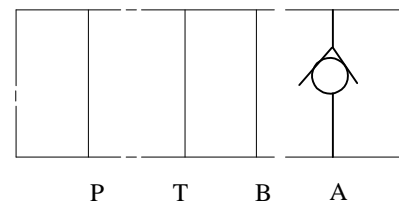
MCV-05-P



MCV-05-T



MCV-05-A



ORDERING CODE

MCV - 05 - P - *

MODULAR CHECK
VALVE

SIZE D05

SPRING

CONTROL PORT
P ~ P PORT
A ~ A PORT
B ~ B PORT
T ~ T PORT

SPECIFICATIONS

TYPES	SIZE	MAX. PRESSURE (PSI)	RATED FLOW (GPM)	PRESSURE RANGE (PSI)	WEIGHT lbs
MCV-05-*1-*	D05	4500 PSI	30	5	6
MCV-05-*2-*				30	
MCV-05-*3-*				65	

IFP offers a modular Check Valve designed for use in applications requiring free flow in only one direction. They can be used effectively in hydraulic circuits for such functions as isolating a portion of the circuit by blocking flow in one direction, providing an unrestricted path around a restricted control or positively holding a pressurized load. The use of modular design make compact hydraulic systems in which the modules are "sandwiched" between a directional valve and standard mounting surface.