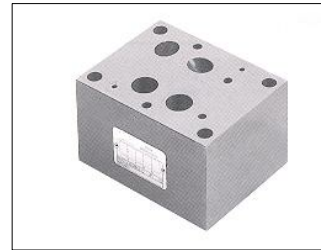


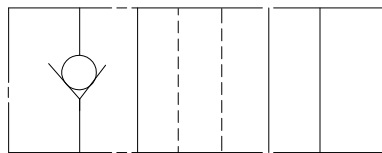
IFP MCV07 CHECK VALVE MODULE



- ISO4401-07 SIZE/NFPA D07
- STEEL SEAT FOR LONG WEAR
- ZERO LEAKAGE

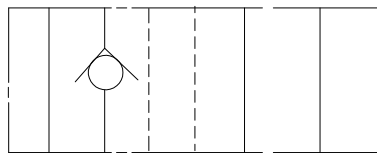


MCV-07-P



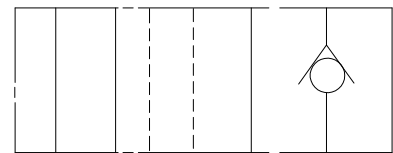
P T Y X B A

MCV-07-T



P T Y X B A

MCV-07-A



P T Y X B A

ORDERING CODE

MCV - 07 - P - *

MODULAR CHECK
VALVE

SIZE D07

SPRING

CONTROL PORT
P ~ P PORT
A ~ A PORT
B ~ B PORT
T ~ T PORT

SPECIFICATIONS

TYPES	SIZE	MAX. PRESSURE (PSI)	RATED FLOW (GPM)	PRESSURE RANGE (PSI)	WEIGHT lbs
MCV-07-*1-*	D07	4570 PSI	26.5	5.7	9.9
MCV-07-*2-*				50	
MCV-07-*3-*				71	

IFP offers a modular Check Valve designed for use in applications requiring free flow in only one direction. They can be used effectively in hydraulic circuits for such functions as isolating a portion of the circuit by blocking flow in one direction, providing an unrestricted path around a restricted control or positively holding a pressurized load. The use of modular design make compact hydraulic systems in which the modules are "sandwiched" between a directional valve and standard mounting surface.