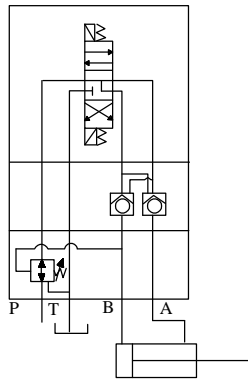


IFP MODULES APPLICATION GUIDELINES

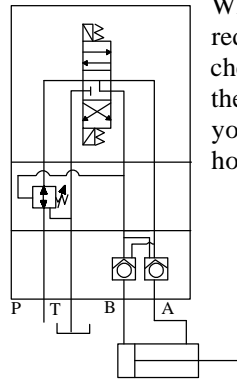


SOLENOID VALVE
(D.G. Series)
Pressure Reducing
(MGV Series)
Pilot Check Valve
(MPC Series)

X WRONG



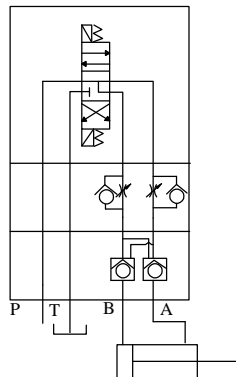
CORRECT



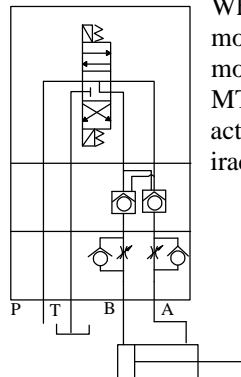
When using the MGV pressure reducing module with the MPC pilot check module in the same assembly, the MPC module should be closest to your actuator to obtain a leak free holding assembly

SOLENOID VALVE
(D.G. Series)
Pilot Check Valve
(MPC Series)
Flow Control
(MTC Series)

X WRONG



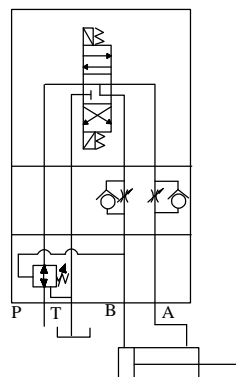
CORRECT



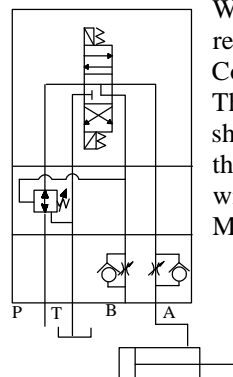
When using the MTC flow control module with the MPC pilot check module in the same assembly, the MTC module should be closest to the actuator, or the actuator will move irradically.

SOLENOID VALVE
(D.G. Series)
Pressure Reducing
(MGV Series)
Flow Control
(MTC Series)

X WRONG



CORRECT



When using the MGV pressure reducing module with the MTC Flow Control Module. The MTC Flow Control Module should be closest to your actuator or the back pressure created by the MTC will affect the pressure setting of the MGV pressure reducing.