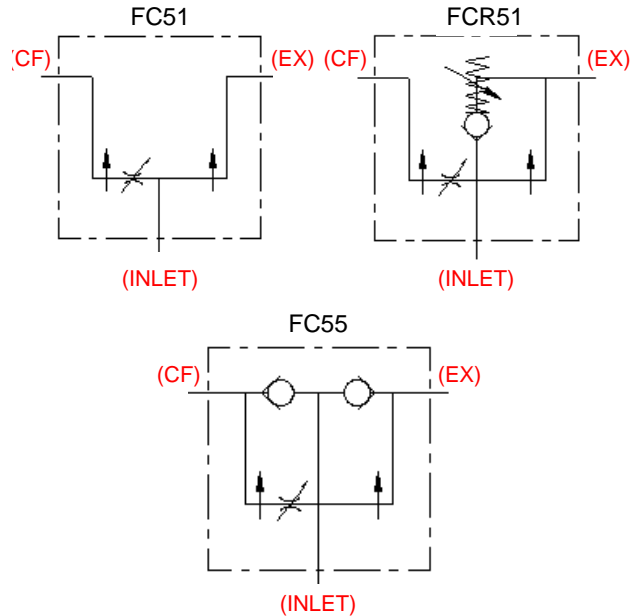


IFP "FC" Variable Flow Control Pressure Compensated



**New Product
2009**



IFP FC & FCR pressure compensated variable flow control valves operate by controlling the controlled flow orifice area from zero to maximum flow with the rotation of the adjustable lever to a specific flow increment. Excess flow is supplied out the excess port on the valve, and the sum of the controlled flow and excess flow is equal to the input flow. Both the controlled flow and excess flow are pressure compensated and provide smooth constant outlet flow regardless of the pressure on the CF and EX ports.

IFP FCR has the added feature of an adjustable ball spring relief on the controlled flow to limit the maximum working pressure of the CF controlled flow.

IFP FC55 incorporates reverse free flow checks allowing cylinders and motors to operate in reverse. Flow can be reversed from either the EX or CF ports bypassing the metering function to the inlet of the valve

IFP FC R 51 - 06 - P - N

Relief:

Omit - No Relief

R- Ball spring Relief

(Factory set 1500 PSI / Adj. 750 - 3000 PSI)

Port Type:

P - NPT Thread

S -SAE O Ring Thread

Flow Path:

51 - Standard Flow Control

55 - Free reverse flow

(Not available FC*R* feature)

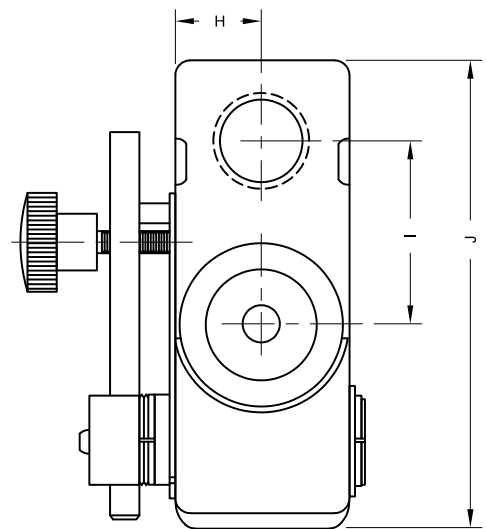
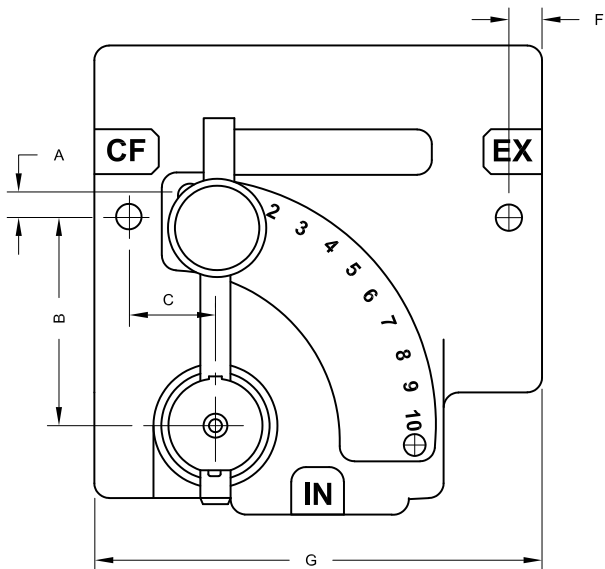
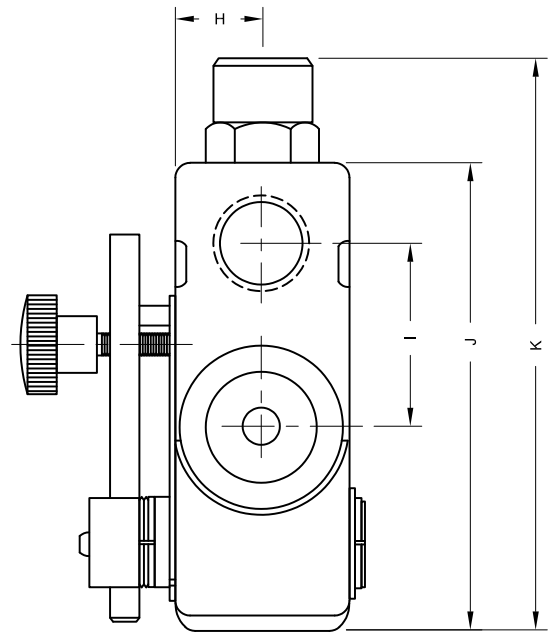
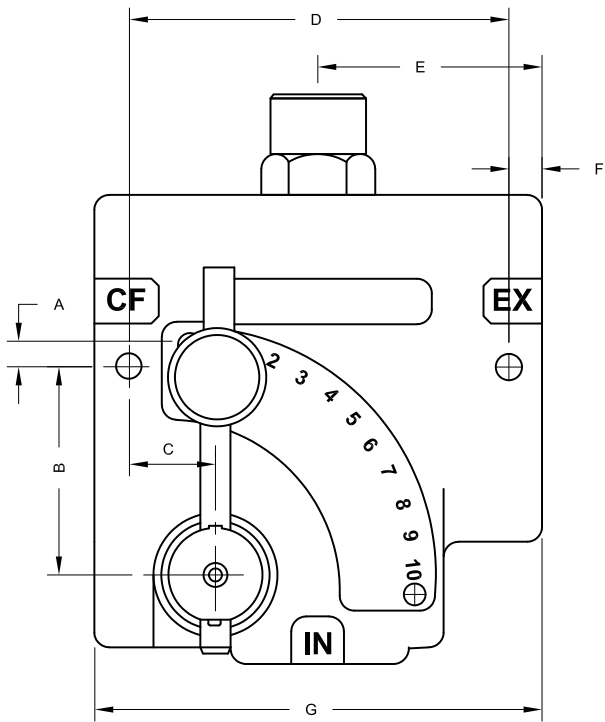
Port Size:

NPT : 04 - 1/2 NPT (0 - 16 GPM)

06 - 3/4 NPT (0 - 30 GPM)

SAE: 05 - SAE- #10 (0 - 16 GPM)

06 - SAE- #12 (0 - 30 GPM)



	A	B	C	D	E	F	G	H	I	J	K
FCR55	.25 (6.3)	2.13 (54.1)	.88 (22.3)	3.87(98.2)	2.28 (57.9)	.34 (8.63)	4.56 (115.8)	.90 (22.8)	1.87 (47.5)	4.75 (120.6)	5.78 (146.8)
FC55	.25 (6.3)	2.13 (54.1)	.88 (22.3)	3.87(98.2)	2.28 (57.9)	.34 (8.63)	4.56 (115.8)	.90 (22.8)	1.87 (47.5)	4.75 (120.6)	5.78 (146.8)