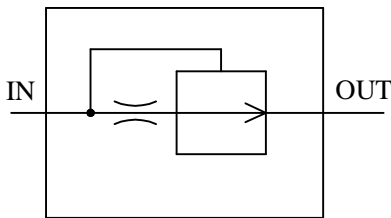
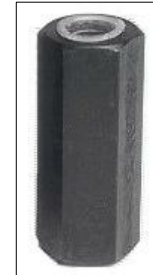


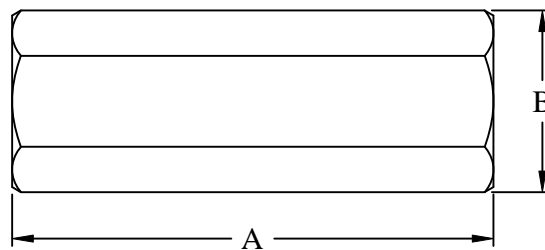
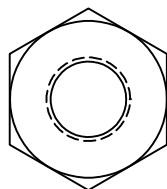
IFP AIR BLEED VALVES



- Removes air trapped in Hydraulic system
- Operating pressure to 5000 PSI (Non stock service)
- Facilitate pump priming at start up



| Model No | Port Sizes | A | B |
|----------|------------|------|------|
| ABT20S | 3/8" NPT | 2.10 | 1.00 |



IFP Air Bleed Valves are used to remove trapped air in a hydraulic circuit or facilitate pump priming at start up when operating in a closed circuit. Unit operates by allowing air to pass at low pressure (start up) to the tank and oil flow will be closed as pressure increases.

Note:- Air Bleed should be installed as close as possible to pump outlet in a vertical position. Air Bleed return line should be terminated below oil level in the reservoir.