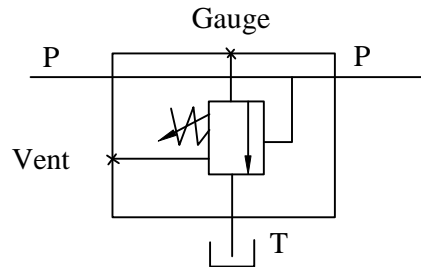


IFP RELIEF VALVES

3000 PSI/BALANCED PISTON TYPE



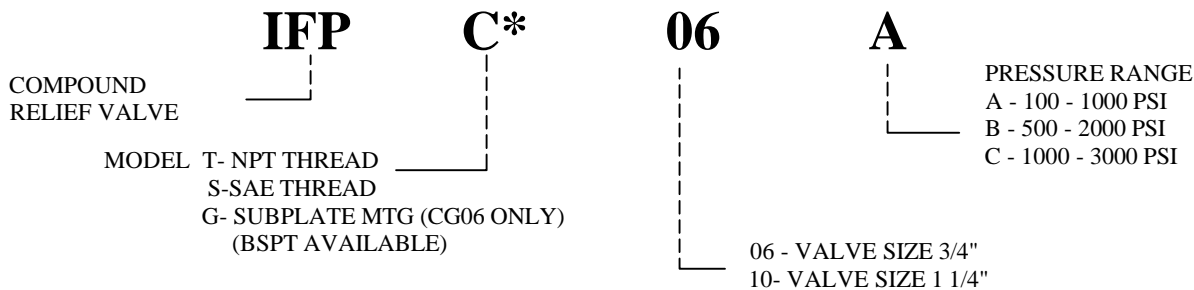
- High Flow
- Low Pressure Differential
- Quiet Operation/No Chatter
- Optional Vent & Remote Port Connection
- Three Pressure Ranges Available
- Gauge Port Standard



RATINGS

Model	Pressure Range (PSI)	Rated Flow (US GPM) C * 06	Rated Flow (US GPM) C * 10
C * - A	100 - 1000 PSI	60 US GPM	120 US GPM
C * - B	500 - 2000 PSI	60 US GPM	120 US GPM
C * - C	1500 - 3000 PSI	60 US GPM	120 US GPM

Ordering Code



IFP offers a balanced piston relief valve designed for use in applications requiring an adjustable regulating valve to limit the pressure in a hydraulic circuit to a predetermined maximum. The relief valve consists of a control poppet and main spool which provides low pressure differential and quiet operation. Pressure can be adjusted by loosening a jam nut and turning the adjustment knob. Turning clockwise increases pressure. Vent port is provided for remotely controlling or venting the relief valve.