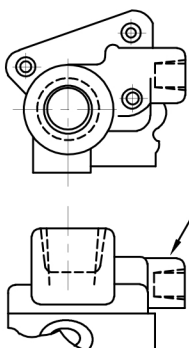


IFP MANIFOLDS FOR POWER STEERING PUMPS



MANIFOLD "MF" (275276N)

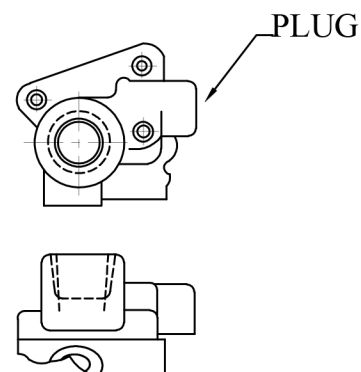
- 3/4 NPT Connection
- C/W 1/4 NPT Bypass



THIS TANK BYPASS CONN. IS REQUIRED FOR INSTALLATIONS WHICH OPERATE AT PUMP RELIEF VALVE PRESSURES FOR PERIODS EXCEEDING 15 SECONDS. CONNECTION MUST BE MADE BELOW OIL LEVEL IN RESERVOIR.

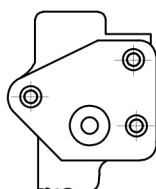
MANIFOLD "ME" (275277N)

- 3/4 NPT Connection
- No Bypass

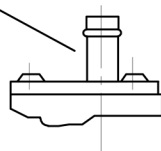


MANIFOLD "MA" (280955N)

- Straight Tube Assembly
- No Bypass



USE .621 I.D. HOSE FASTEN WITH HOSE CLAMP. MUST BE AIR TIGHT.



MANIFOLD "MJ" (292457N)

- $\frac{3}{4}$ " SAE Connection
- Casting w/Out Bypass Tube

