

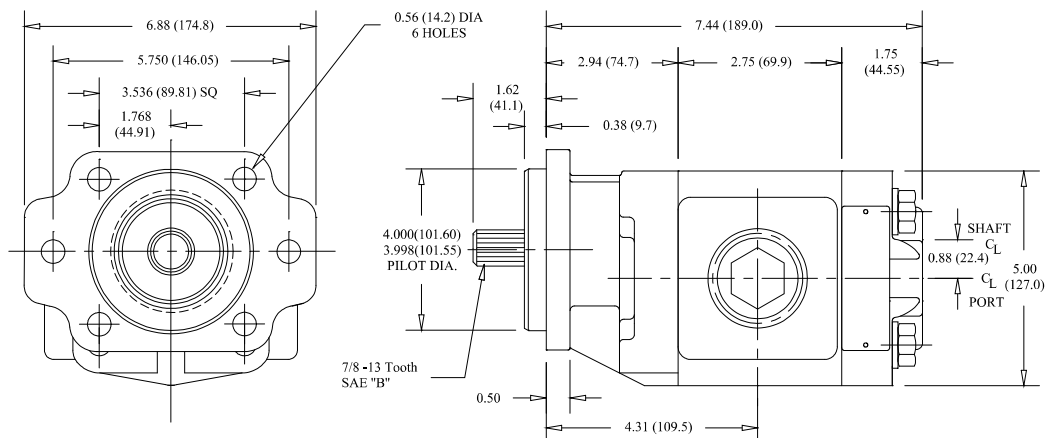
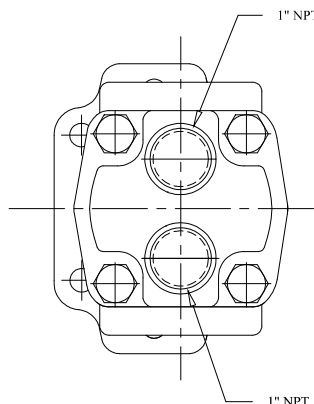
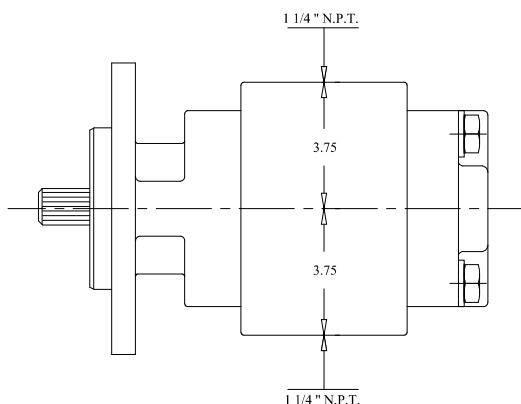
FEATURES

- Interchangeable – Assembly and parts
 - Parker Commercial Intertech "P20" series
 - Muncie "K" series
 - Permco P2100
- Bi-Rotational – Can be installed on CW/CCW installations
- 4 Port Design – Porting on both side and rear allows installation flexibility
- Durability – High grade castings and heavy duty bearing assembly meet the most severe applications

In stock - 2005

APPLICATIONS

- Tow equipment
- Utility line trucks
- Small hoists
- Snow plows
- Farm bodies
- Lift Gates
- Cherry Pickers
- Any heavy duty equipment



Assembly Number P2000A446QUYL20 25 (IAO402OIO)

SPECIFICATIONS:

- 3.94 in³/rev (Other displacements available on request)
- 1 1/4 NPT SIDE & 1 NPT REAR (Other port sizes available on request)
- Shaft: SAE B Spline (Other shafts available on request)
- Mounting: SAE B 4 & 2 Bolt (Other mounts available on request)
- Speed range - 600 2500 RPM
- Maximum pressure - 2500 PSI