

IFP DRIVE COUPLINGS



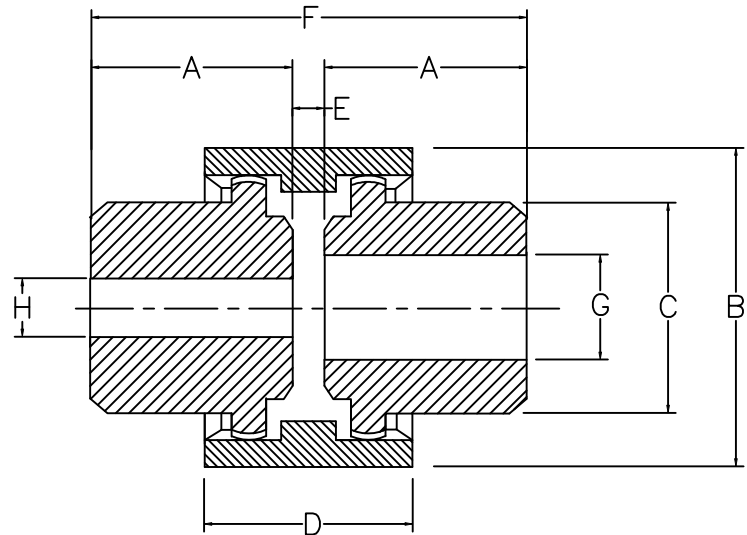
- Low cost
- Long trouble free life
- Easy installation
- High Horsepower to weight ratio
- Requires no maintenance or lubrication



IFP FLEXIBLE DRIVE COUPLINGS have two steel gear hubs engaged in a nylon sleeve. The gears have a crowned tooth form which permits axial and angular misalignment. They are low cost, easy to assemble, and require no maintenance or lubrication. IFP has standardized on three models to cover a comprehensive range of bore sizes and power ratings.

Assembly Procedure:

1. Maximum angular misalignment is $\pm 2^\circ$.
Maximum parallel misalignment is ± 0.039 " (1 mm).
2. Ensure that the IFP Drive Coupling gear Hubs are an easy fit to their respective shafts. Do not use heavy blows to force the hubs on.
3. When in position, the hubs should have a gap of 0.156" (4 mm) as denoted by 'E' dimension. Maximum gap is not critical, so long as teeth on both hubs are completely within sleeve at all times when installed.
4. Tighten grub screws to locate both gear hubs on to their respective shafts.



MODEL	Max. Speed R.P.M	HP Per 100 RPM	Weight Lb. (kg.)	A in(mm)	B in(mm)	C in(mm)	D in(mm)	E in(mm)	F in(mm)	G		H Pilot Bore
										Max. Bore	Min. Bore	
IFP-28	5000	1	2.2 (1)	1.6(40)	2.6(67)	1.7(44)	1.5(38)	0.2(4)	3.3(84)	11/8(28)	0.4(10)	0.4(10)
IFP-42	5000	1.75	4.4 (2)	1.7(42)	3.4(87)	2.4(60)	2.0(52)	0.2(4)	3.5(88)	15/8(42)	0.4(10)	0.4(10)
IFP-55	4000	8	11.0(5)	2.4(60)	4.8(121)	3.1(80)	2.5(64)	0.2(4)	4.9(124)	21/8(55)	0.7(19)	0.7(19)