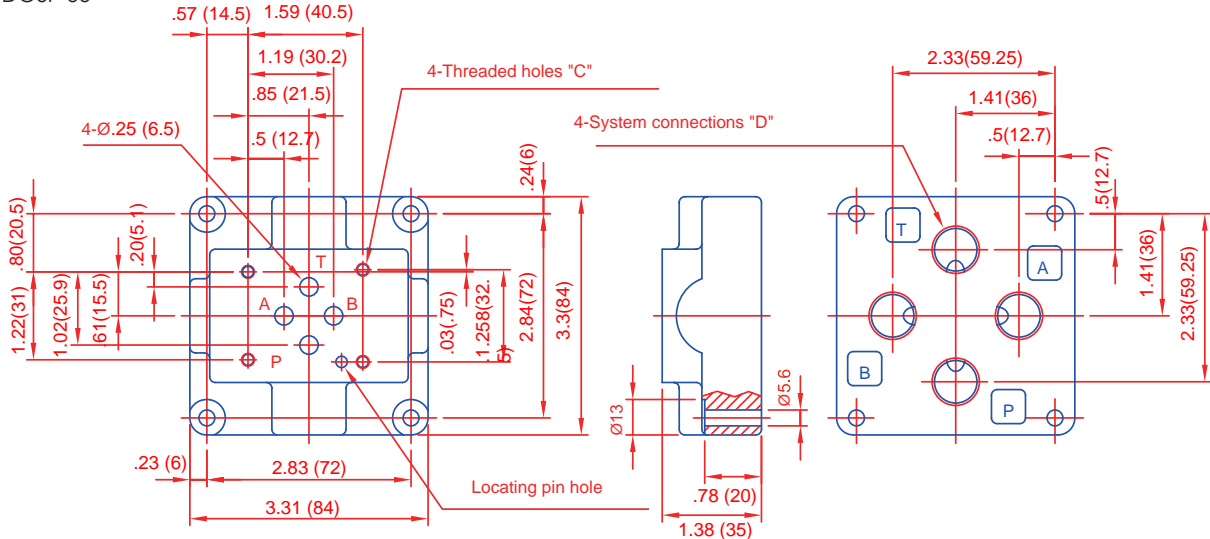


IFP DG03 SOLENOID OPERATED DIRECTIONAL CONTROL VALVE SIZE NG-6/CETOP-03

SUBPLATE DIMENSIONS:

Bottom Connection

■ DGSP-03*-*



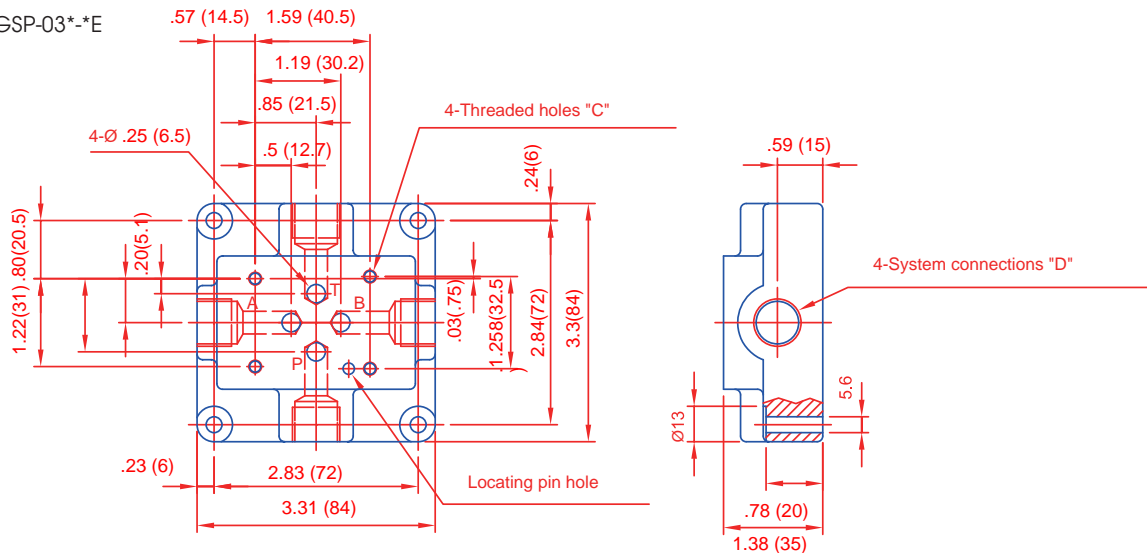
Dimensions: inches (mm)

Model	C	D	Weight
DGSP-03N-6	NO. 10-24UNC-2B	3/8"NPT	3.0 Lbs 1.4 Kgs
DGSP-03N-8	Thrd. 1/2" Deep	1/2"NPT	
DGSP-03S-6	Full Thread Depth	3/8"SAE	
DGSP-03S-8		1/2"SAE	

Model	C	D	Weight
DGSP-03-6	M5 *14 Deep (Min) Full Thread Depth	3/8"Rc	3.0 Lbs 1.4Kgs
DGSP-03-8		1/2"Rc	
DGSP-03G-6		3/8"BSP	
DGSP-03G-8		1/2"BSP	

Side Connection

■ DGSP-03*-*E



Dimensions: inches (mm)

Model	C	D	Weight
DGSP-03N-6E	Nbr.10-24UNC-2B Thrd. 1/2" Deep Full Thread Depth	3/8"NPT	3.0 Lbs 1.4 Kgs
DGSP-03N-8E		1/2"NPT	
DGSP-03S-6E		3/8"SAE	
DGSP-03S-8E		1/2"SAE	

Model	C	D	Weight
DGSP-03-6E	M5*14 Deep (min) Full Thread Depth	3/8"RC	1.4 Kgs
DGSP-03-8E		1/2"R	
DGSP-03G-6E		3/8"BSP	
DGSP-03G-8E		1/2"BSP	