

# IFP DG05 SOLENOID OPERATED DIRECTIONAL CONTROL VALVE SIZE NG-10/CETOP-05

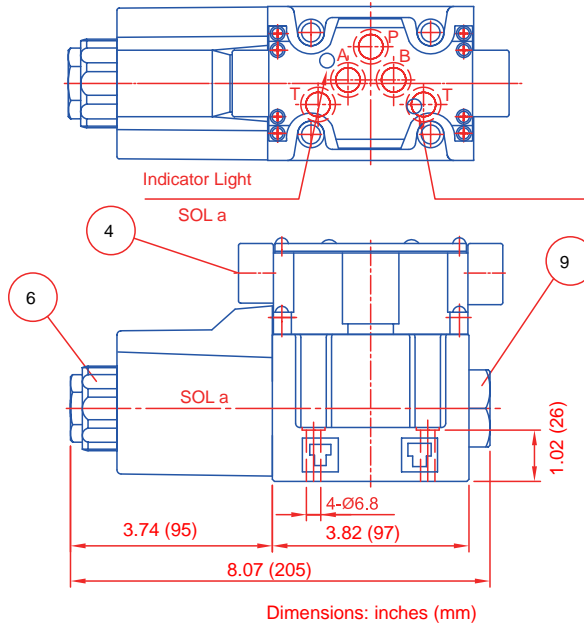
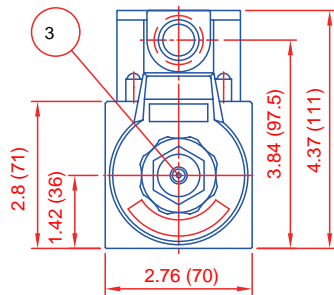
## DIMENSIONS:

AC solenoid (WB Type)

■ DG05-\*A AC\* 72WB

\* B

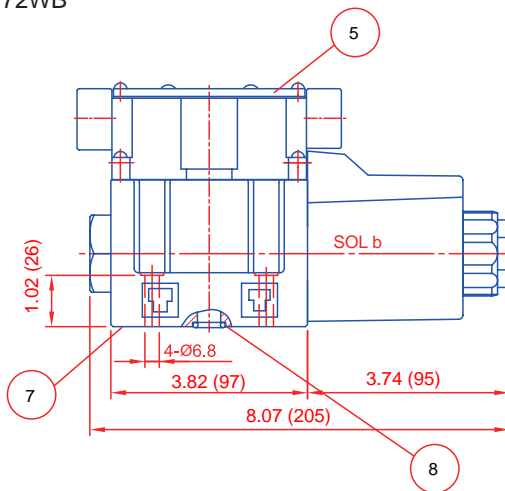
\*F



■ DG05-\*AL AC\* 72WB

\* B

\*F



- 1: Solenoid a
- 2: Solenoid b
- 3: Push pin for manual operation
- 4: Lead wire take-out (G1/2")
- 5: Nameplate
- 6: lock nut with torque: not exceeding 10.5 N.m
- 7: Connections to DIN 24340 from a10; valve fixing screws m6\*35 DIN 912-10.9 tightening torque 12~15 Nm
- 8: O-ring AS568-014 (Hs90)
- 9: Plug for valves with 1 solenoid
- 10: Coil removable length

■ DG05-\*C-AC\* 72WB

\*N

