

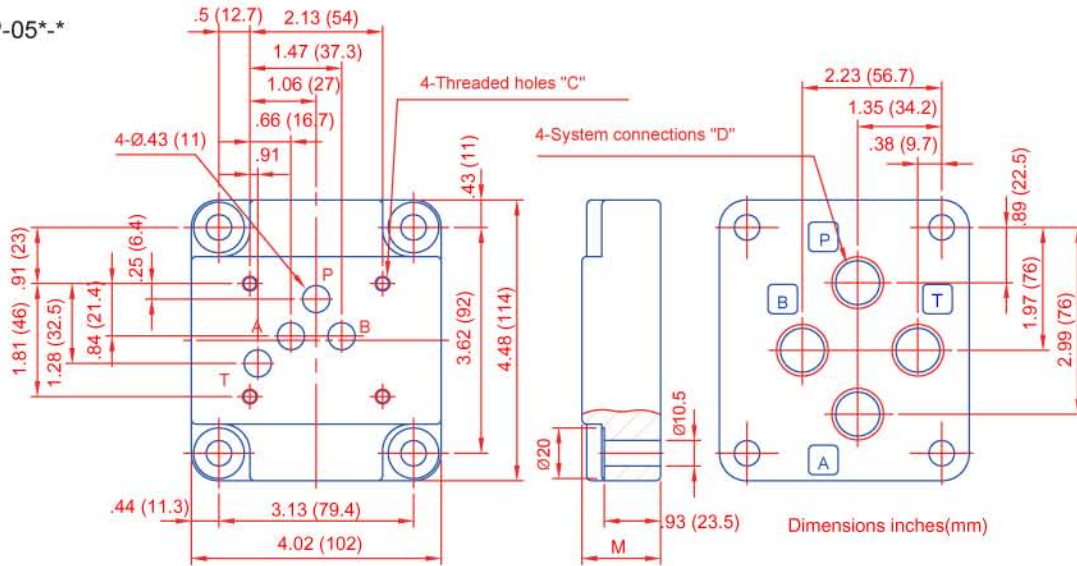
# IFP DG05 SUBPLATE

## DIRECTIONAL CONTROL VALVE SIZE NG-10/CETOP-05

### SUBPLATE DIMENSIONS:

Bottom Connection

■ DGSP-05\*-\*

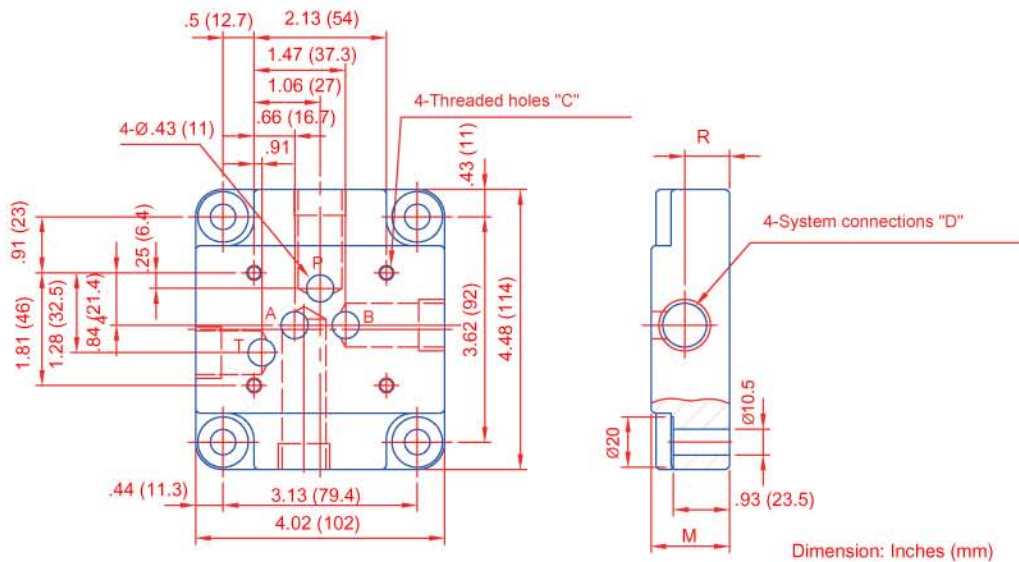


model	C	D	M	
DGSP-05N 08	1/4"-20 UNC-2B	1/2" NPT	1.26	4.6 lbs
DGSP-05N 12	Thd 1/2" Deep	3/4"NPT	1.5	5.3 lbs
DGSP-05S 8		1/2" SAE	1.26	4.6 lbs
DGSP-05S 12		3/4"SAE	1.5	5.3 lbs

model	C	D	M	Weight
DGSP-05-8	M6 *14 Deep (Min)	1/2" NPT	32	2.1 Kgs
DGSP-05-12		3/4"NPT	38	2.4 Kgs
DGSP-05G-8	Full Thread Depth	1/2" SaE	32	2.1 Kgs
DGSP-05G-12		3/4" SaE	38	2.4 Kgs

Side Connection

■ DGSP-05\*-\*E



model	C	D	M	R	Weigh
DGSP-05N 8E	1/4"-20 UNC-2B	1/2"NPT	1.26	.63	4.6 LBS
DGSP-05N 12E		3/4 NPT	1.5	.71	5.3 LBS
DGSP-05S 8E	Thd 1/2" Deep	1/2"SAE	1.26	.63	4.6 LBS
DGSP-05S 12E		3/4"SAE	1.5	.71	5.3 LBS

model	C	D	M	R	Weight
DGSP-05-8E	M6 *14 Deep (Min)	1/2" RC	32	16	2.1 Kgs
DGSP-05-12E		3/4"RC	38	18	2.4 Kgs
DGSP-05G-8E	Full Thread Depth	1/2"BSP	32	16	2.1 Kgs
DGSP-05G-12E		3/4"BSP	38	18	2.4 Kgs