

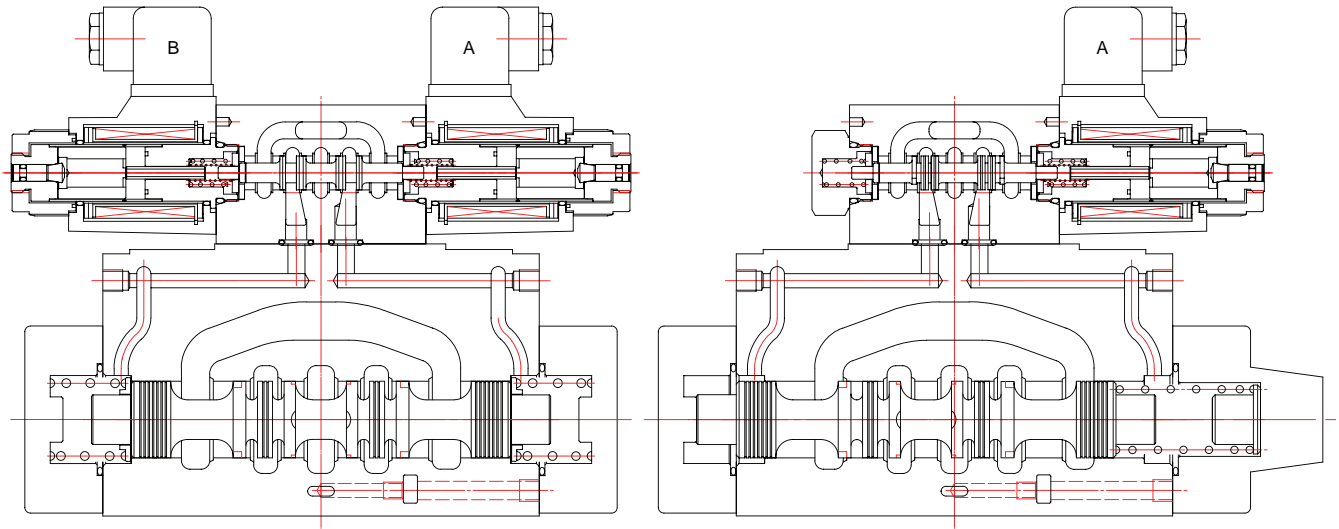
IFP DG07 SOLENOID CONTROLLED

PILOT OPERATED DIRECTIONAL VALVE SIZE NG-16 / CETOP-07

CROSS SECTION DIAGRAM:

■ DG07-2C-AC*-72DN

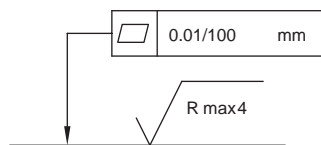
■ DG07-2A-AC*-72DN



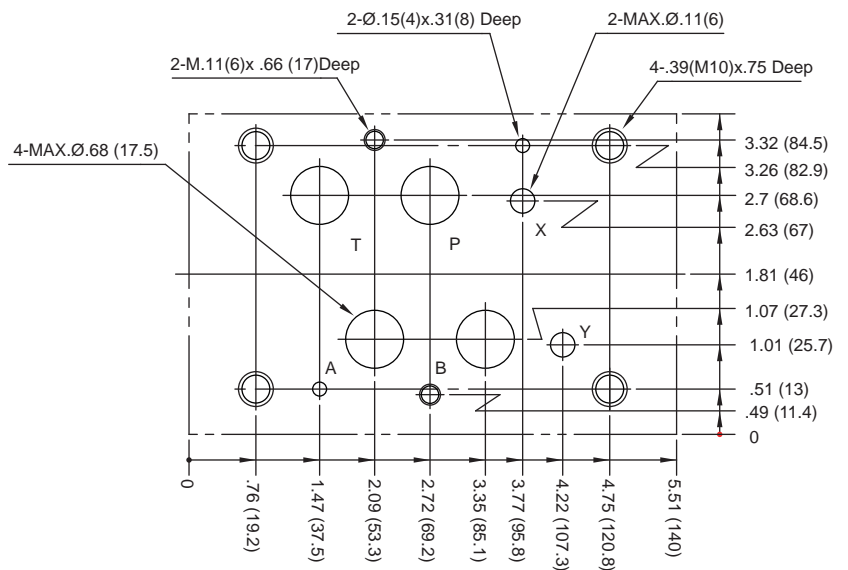
INSTALLATION DIMENSIONS:

(machined valve mounting face with position of ports)VAVE

■ mounting Surface: ISO 4401-AD-07-4-A



Required surface finish of mating piece when fitting the valve without subplate



Dimension: Inches (mm)