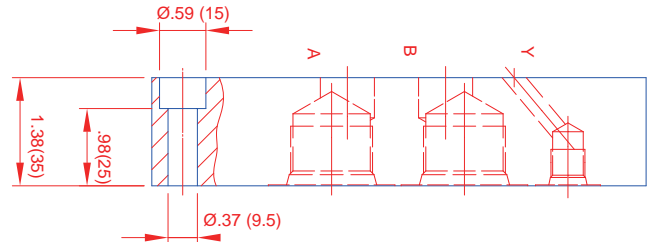
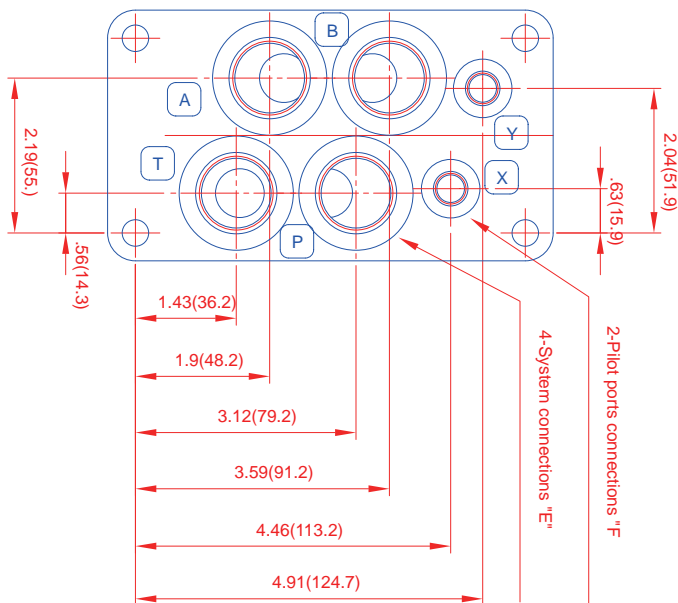
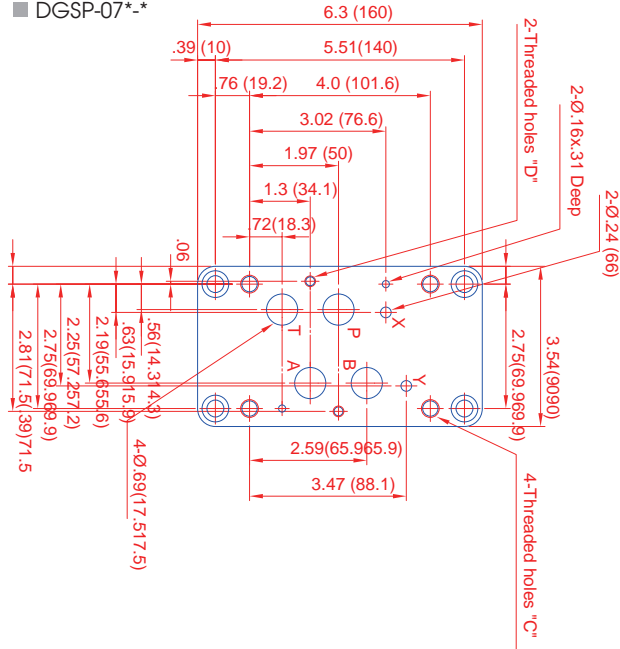


IFP DG07 SOLENOID CONTROLLED PILOT OPERATED DIRECTIONAL VALVE SIZE NG16/ CETOP-07

SUBPLATE DIMENSIONS:

Bottom Connection

■ DGSP-07*-*



Model	C	D	E	F	Weight
DGSP-07-12	M10*19 Deep (Min)	M6*14 Deep (Min)	3/4"Rc	1/4"Rc	6.1LB / 2.8Kg
DGSP-07-16			1"Rc	1/4"Rc	6.1LB / 2.8Kg
DGSP-07G-12			3/4"BSP	1/4"BSP	6.1LB / 2.8Kg
DGSP-07G-16			1"BSP	1/4"BSP	6.1LB / 2.8Kg
DGSP-07N-12	3/8"-16 UNC-2B	1/4"-20 UNC-2B	3/4"NPT	1/4"NPT	6.1LB / 2.8Kg
DGSP-07N-16			1"NPT	1/4"NPT	6.1LB / 2.8Kg
DGSP-07S-12			3/4"SAE	1/4"SAE	6.1LB / 2.8Kg
DGSP-07S-16	Thd. *3/4" Deep	Thd. *9/16" Deep	1"SAE	1/4"SAE	6.1LB / 2.8Kg