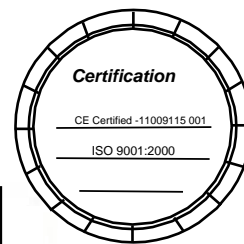


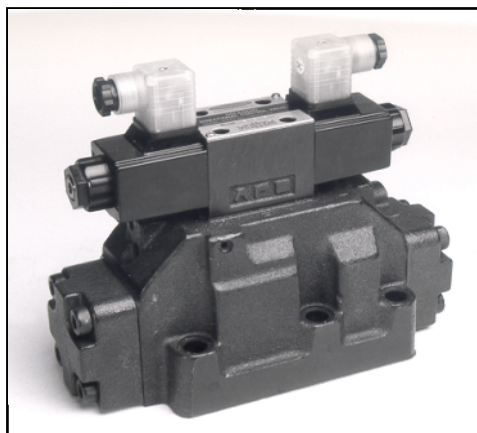
# IFP DG08 SOLENOID CONTROLLED PILOT OPERATED DIRECTIONAL VALVE SIZE NG22/CETOP08



DG08 SIZE 22

### FEATURES :

- Highest performance in NG 22
- Optimized spool design to reduce flow force
- Proven quality through 10 million endurance test
- Manual overrides standard
- P port pilot pressure insert for open center spools
- Connections to DIN, ISO and CETOP



### SPECIFICATION :

Maximum Flow Rate	119 GPM (450 L/Min)	
Maximum Operating Pressure	4500 PSI (320 Bar)	
Maximum Permissible Back Pressure	2285 PSI (160 Bar)	
Pilot Pressure	159~300 PSI (11~210 Bar)	
Ambient Temperature Range	5°F~122°F (-15 °C~50 °C)	
Hydraulic Fluid Temperature	5 °F~158°F (-15 °C~70 °C)	
Viscosity Range	15~400 <sup>2</sup> /S	
Hydraulic Oil	ISO VG 32,46,68	
Fluid Cleanliness	NAS Class 9 max	
Maximum change over frequency	120 times/min	
Mounting Pattern	ISO 4401-AE-08-4-A	
Approx. Weight (Valve with hydraulic operation)	26.4Lbs (12.5 Kgs)	
Valve Fixing Screws	Metric	M12*60l (6 pcs)
	Inch	1/2"~13UNCx2-1/4"L (6 pcs)
Tightening Torque	885-1079 in/lbs (100~122.5 Nm)	

### GRAPHIC SYMBOL :

- DG08-E-\*C-T-\*-\*

