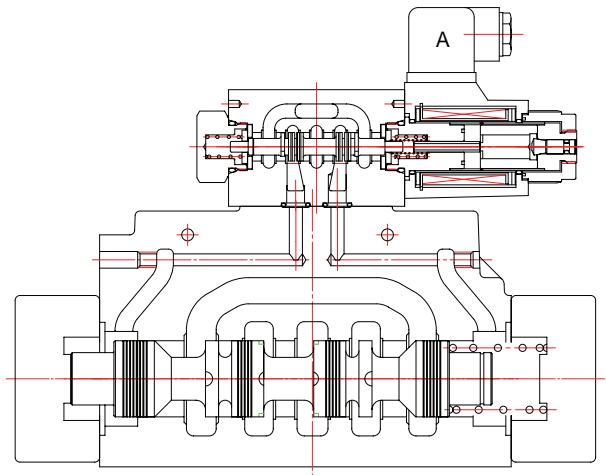
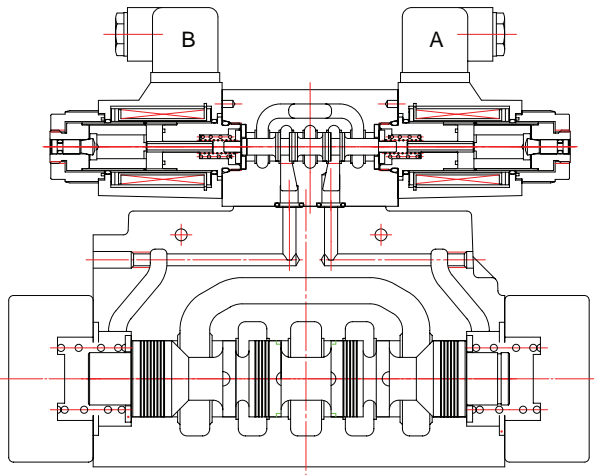


**IFP DG08 SOLENOID CONTROLLED  
 PILOT OPERATED DIRECTIONAL VALVE SIZE NG22/CETOP08**

CROSS SECTION DIAGRAM:

■ DG08-2C - AC\* 72DN

■ DG08-2A - AC\* 72DN



**INSTALLATION DIMENSIONS:**

(Machined valve mounting face with position of ports)

■ Mounting Surface: ISO 4401-AE-08-4-A

