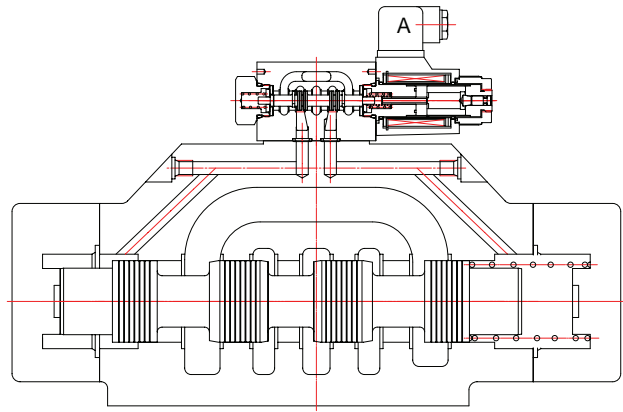
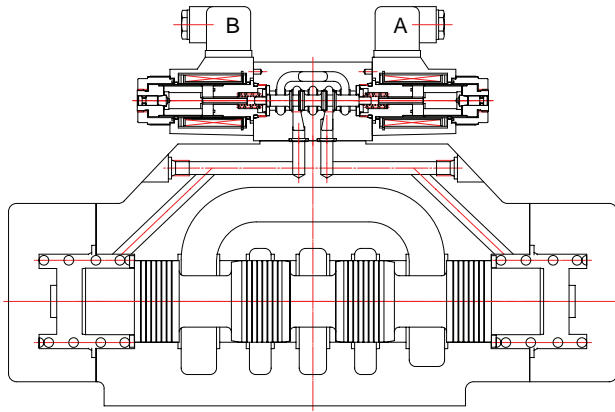


IFP DG10 SOLENOID CONTROLLED PILOT OPERATED DIRECTIONAL VALVE SIZE NG32/CETOP10

CROSS SECTION DIAGRAM:

■ DG10-2C-AC*72DN

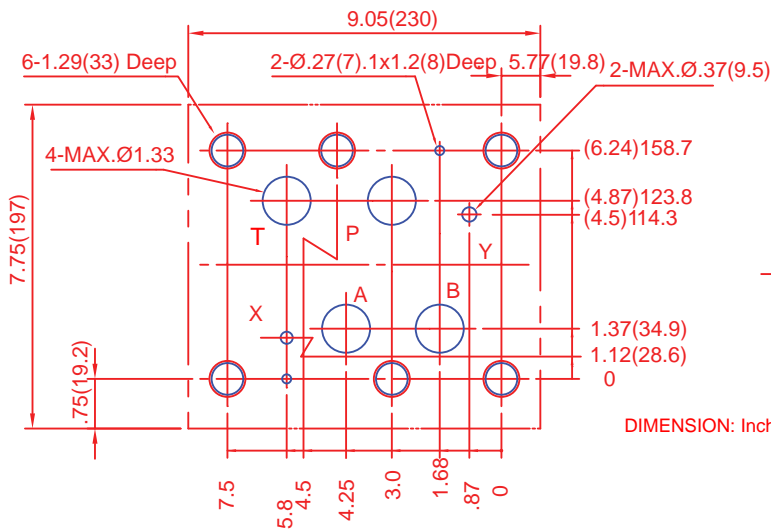
■ DG10-2A AC*72DN



INSTALLATION DIMENSIONS:

(Machined valve mounting face with position of ports)

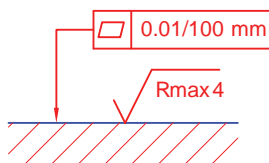
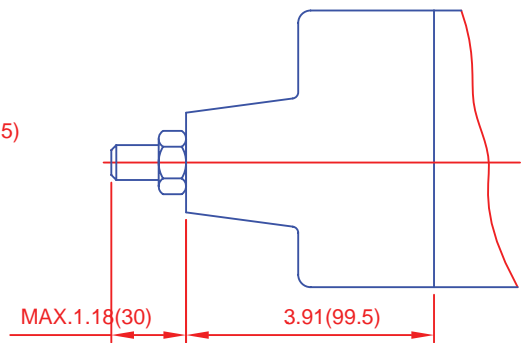
■ Mounting Surface: ISO 4401-AF-10-4-A



DIMENSION: Inches (mm)

STROKE ADJUSTMENT

■ DG10-E-*-*-70-S



Required surface finish of
 mating piece when fitting
 the valve without subplate