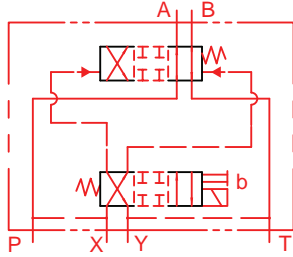


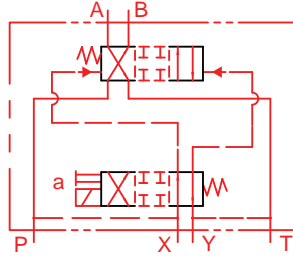
# IFP DG10 SOLENOID CONTROLLED PILOT OPERATED DIRECTIONAL VALVE SIZE NG32/CETOP10

**DIMENSIONS:**

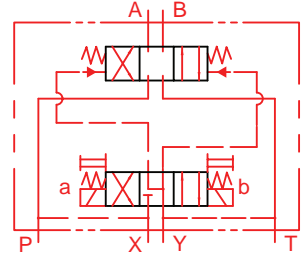
■ DG10-E-2A-T-\*\*-\*\*  
 (\*A)



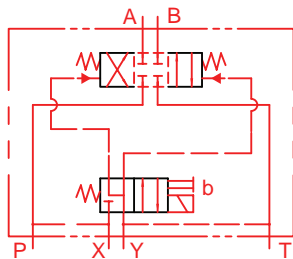
■ DG10-E-2ALT-\*\*-\*\*  
 (\*AL)



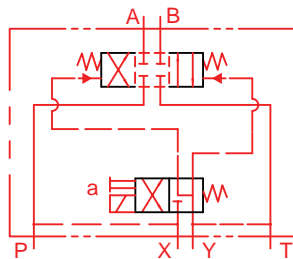
■ DG10-E-\*C-T-\*\*-\*\*



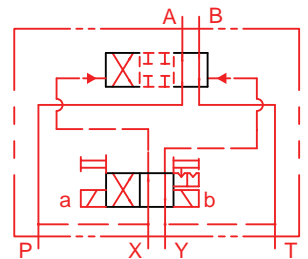
■ DG10-E-2B-T-\*\*-\*\*  
 (\*B)



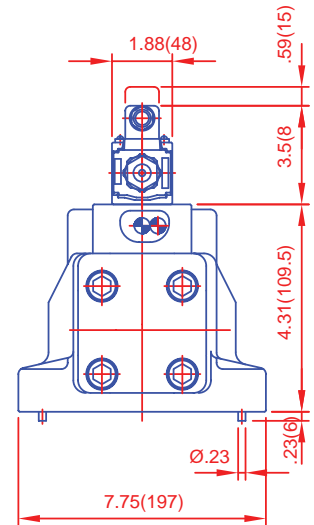
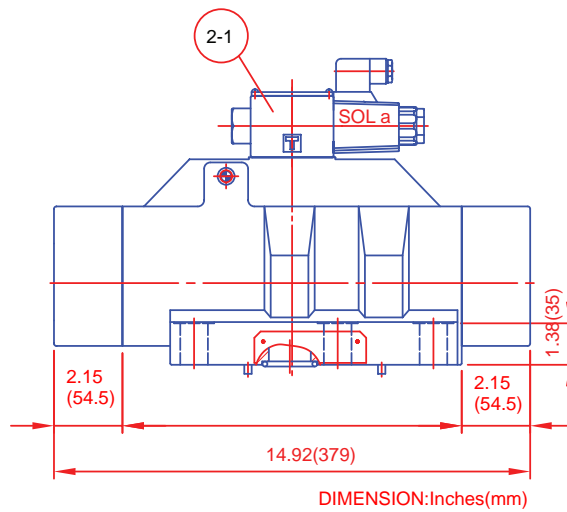
■ DG10-E-2BL-T-\*\*-\*\*  
 (\*BL)



■ DG10-E-2N-T-\*\*-\*\*



■ DG10-E-\*A AC\* 72DN  
 \*B



■ DG10-E-\*AL AC\* 72DN  
 \* BL

