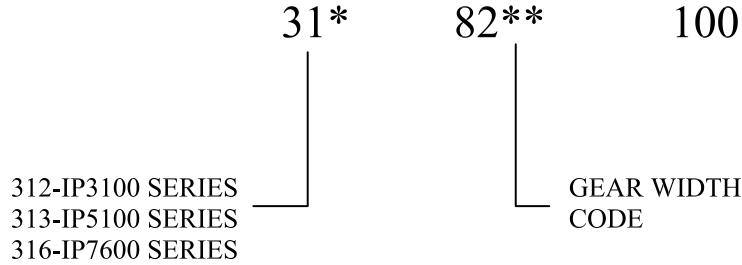


IFP IP3100/IP5100/IP7600 GEAR HOUSINGS

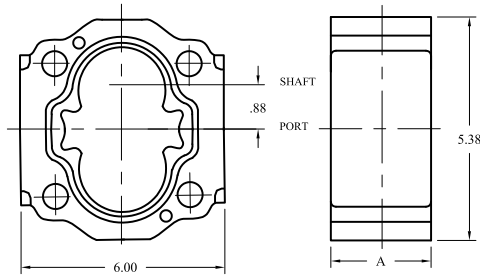


GEAR HOUSING PART NUMBER NOMENCLATURE



GEAR WIDTH CODE	GEAR WIDTH INCHES
05	1/2"
07	3/4"
10	1"
12	1 1/4"
15	1 1/2"
17	1 3/4"
20	2"
22	2 1/4"
25	2 1/2"
27	2 3/4"
30	3"

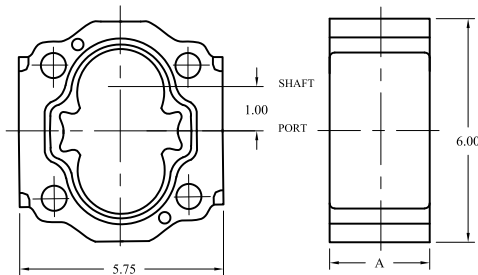
GEAR HOUSING IP3100



IP3100 GEAR HOUSING

HOUSING CODE	IN3/REV DISPLACEMENT	MAXIMUM PRESSURE	HOUSING PART NUMBER	DIMENSION "A"
05	0.99	3000 PSI	312-8205-100N	1.25
07	1.48	3000 PSI	312-8207-100N	1.50
10	1.97	3000 PSI	312-8210-100N	1.75
12	2.46	3000PSI	312-8212-100N	2.00
15	2.96	3000PSI	312-8215-100N	2.25
17	3.45	2500PSI	312-8217-100N	2.50
20	3.94	2500 PSI	312-8220-100N	2.75

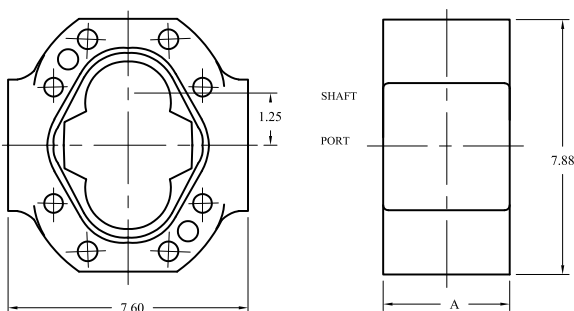
GEAR HOUSING IP5100



IP5100 GEAR HOUSING

HOUSING CODE	IN3/REV DISPLACEMENT	MAXIMUM PRESSURE	HOUSING PART NUMBER	DIMENSION "A"
07	1.91	3000 PSI	313-8207-100N	1.50
10	2.55	3000 PSI	313-8210-100N	1.75
12	3.19	3000 PSI	313-8212-100N	2.00
15	3.83	3000 PSI	313-8215-100N	2.25
17	4.46	3000 PSI	313-8217-100N	2.50
20	5.10	2500 PSI	313-8220-100N	2.75
22	5.74	2500 PSI	313-8222-100N	3.00
25	6.38	2500 PSI	313-8225-100N	3.25

GEAR HOUSING IP7600



IP7600 GEAR HOUSING

HOUSING CODE	IN3/REV DISPLACEMENT	MAXIMUM PRESSURE	HOUSING PART NUMBER	DIMENSION "A"
07	3.07	3000 PSI	316-8207-100N	1.75
10	4.10	3000 PSI	316-8210-100N	2.00
12	5.12	3000 PSI	316-8212-100N	2.25
15	6.15	3000PSI	316-8215-100N	2.50
17	7.17	3000 PSI	316-8217-100N	2.75
20	8.20	3000 PSI	316-8220-100N	3.00
22	9.22	2500 PSI	316-8222-100N	3.25
25	10.25	2500 PSI	316-8225-100N	3.50
27	11.27	2500 PSI	316-8227-100N	3.75
30	12.30	2500 PSI	316-8230-100N	4.00